



*WEEKLY SALES SUMMARY*

Unaudited

[Week Ending: 01/01/2011](#)

Texas Lottery Commission  
Fiscal Year to Date Sales Comparison  
Unaudited

Through the week ending 01/01/2011 (18 weeks)

Sales by Game	FY 2009 *	FY 2010 **	FY 2011	\$ Change		% Change	
				FY 2011 to FY 2009	FY 2011 to FY 2010 to	FY 2011 to FY 2009	FY 2011 to FY 2010
Instants	\$ 926,449,701	\$ 933,435,118	\$ 929,283,935	\$ 2,834,234	\$ -4,151,183	0.3%	-0.4%
Lotto Texas	62,070,772	93,655,485	56,888,738	-5,182,034	-36,766,747	-8.3%	-39.3%
Pick 3	95,249,728	90,733,222	91,286,987	-3,962,741	553,765	-4.2%	0.6%
Pick 3 Sum It Up	2,015,852	1,812,843	1,852,537	-163,315	39,695	-8.1%	2.2%
Cash Five	24,224,747	22,875,597	21,558,037	-2,666,710	-1,317,560	-11.0%	-5.8%
Texas Two Step	15,309,419	15,362,601	16,403,896	1,094,477	1,041,295	7.1%	6.8%
Mega Millions	59,353,340	65,576,042	56,815,779	-2,537,561	-8,760,263	-4.3%	-13.4%
Megaplier	14,030,749	14,663,070	11,822,839	-2,207,910	-2,840,231	-15.7%	-19.4%
Daily 4	14,418,754	17,579,753	18,952,785	4,534,031	1,373,033	31.4%	7.8%
Daily 4 Sum It Up	1,853,253	1,697,229	1,490,970	-362,283	-206,259	-19.5%	-12.2%
Powerball	-	-	27,935,124	27,935,124	27,935,124	-	-
Power Play	-	-	6,774,828	6,774,828	6,774,828	-	-
<b>Total</b>	<b>\$ 1,214,976,314</b>	<b>\$ 1,257,390,959</b>	<b>\$ 1,241,066,455</b>	<b>\$ 26,090,141</b>	<b>\$ -16,324,504</b>	<b>2.1%</b>	<b>-1.3%</b>

\* 2 extra days      \*\* 1 extra day

Texas Lottery Commission  
Fiscal Year to Date Cumulative Average Sales Comparison  
Unaudited

Through the week ending 01/01/2011 (18 weeks)

Sales by Game	FY 2009	FY 2010	FY 2011
Instant	\$ 7,411,598	\$ 7,527,703	\$ 7,555,154
Lotto Texas	496,566	755,286	462,510
Pick 3	761,998	731,720	742,171
Pick 3 Sum It Up	16,127	14,620	15,061
Cash Five	193,798	184,481	175,269
Texas Two Step	122,475	123,892	133,365
Mega Millions	474,827	528,839	461,917
Megaplier	112,246	118,251	96,121
Daily 4	115,350	141,772	154,088
Daily 4 Sum It Up	14,826	13,687	12,122
Powerball	-	-	227,115
Power Play	-	-	55,080
<b>Total</b>	<b>\$ 9,719,811</b>	<b>\$ 10,140,250</b>	<b>\$ 10,089,971</b>
	thru 01/03/2009 125 days	thru 01/02/2010 124 days	thru 01/01/2011 123 days

Texas Lottery Commission  
Fiscal Year Over Year Change in Sales  
Unaudited  
FY 2011 Compared to FY 2010

Week	FY 2011 Week Ending	INSTANT TICKETS				ON-LINE GAMES				TOTAL SALES			
		FY 2011	FY 2010	Difference	% change - Cumulative Sales	FY 2011	FY 2010	Difference	% change - Cumulative Sales	FY 2011	FY 2010	Difference	% change - Cumulative Sales
1	9/4/2010**	\$31,659,033	\$40,148,241	(\$8,489,208)	-21.1%	\$11,430,717	\$15,859,194	(\$4,428,478)	-27.9%	\$43,089,750	\$56,007,435	(\$12,917,686)	-23.1%
2	9/11/2010	\$48,912,598	\$49,896,100	(\$983,502)	-2.0%	\$16,398,160	\$18,206,315	(\$1,808,155)	-9.9%	\$65,310,758	\$68,102,415	(\$2,791,657)	-4.1%
3	9/18/2010	\$48,988,241	\$50,971,937	(\$1,983,696)	-3.9%	\$17,166,827	\$18,859,622	(\$1,692,795)	-9.0%	\$66,155,068	\$69,831,559	(\$3,676,491)	-5.3%
4	9/25/2010	\$48,471,310	\$49,975,243	(\$1,503,933)	-3.0%	\$15,623,813	\$19,345,435	(\$3,721,622)	-19.2%	\$64,095,123	\$69,320,678	(\$5,225,555)	-7.5%
5	10/2/2010	\$50,145,138	\$52,283,569	(\$2,138,431)	-4.1%	\$16,453,939	\$20,991,695	(\$4,537,756)	-21.6%	\$66,599,077	\$73,275,264	(\$6,676,187)	-9.1%
6	10/9/2010	\$50,918,591	\$52,238,261	(\$1,319,670)	-2.5%	\$16,974,963	\$21,547,439	(\$4,572,476)	-21.2%	\$67,893,554	\$73,785,700	(\$5,892,146)	-8.0%
7	10/16/2010	\$49,096,011	\$50,806,599	(\$1,710,588)	-3.4%	\$16,661,904	\$23,114,594	(\$6,452,690)	-27.9%	\$65,757,915	\$73,921,193	(\$8,163,278)	-11.0%
8	10/23/2010	\$50,158,946	\$50,731,592	(\$572,646)	-1.1%	\$17,374,460	\$17,274,411	\$100,049	0.6%	\$67,533,406	\$68,006,003	(\$472,598)	-0.7%
9	10/30/2010	\$49,775,287	\$50,684,853	(\$909,566)	-1.8%	\$18,402,209	\$15,710,720	\$2,691,489	17.1%	\$68,177,496	\$66,395,573	\$1,781,923	2.7%
10	11/6/2010	\$53,337,848	\$54,633,928	(\$1,296,080)	-2.4%	\$17,321,908	\$16,961,611	\$360,297	2.1%	\$70,659,756	\$71,595,539	(\$935,784)	-1.3%
11	11/13/2010	\$52,285,479	\$52,109,218	\$176,261	0.3%	\$16,388,690	\$16,407,349	(\$18,660)	-0.1%	\$68,674,169	\$68,516,567	\$157,602	0.2%
12	11/20/2010	\$52,424,036	\$52,427,881	(\$3,845)	0.0%	\$16,138,022	\$15,829,561	\$308,461	1.9%	\$68,562,058	\$68,257,442	\$304,616	0.4%
13	11/27/2010	\$51,262,518	\$50,519,477	\$743,041	1.5%	\$15,967,075	\$15,710,447	\$256,628	1.6%	\$67,229,593	\$66,229,924	\$999,669	1.5%
14	12/4/2010	\$56,385,259	\$54,376,448	\$2,008,811	3.7%	\$17,553,175	\$16,905,341	\$647,835	3.8%	\$73,938,434	\$71,281,789	\$2,656,646	3.7%
15	12/11/2010	\$56,540,048	\$52,654,632	\$3,885,416	7.4%	\$17,703,352	\$17,726,695	(\$23,343)	-0.1%	\$74,243,400	\$70,381,327	\$3,862,073	5.5%
16	12/18/2010	\$57,699,991	\$54,542,793	\$3,157,198	5.8%	\$18,465,282	\$19,379,751	(\$914,469)	-4.7%	\$76,165,273	\$73,922,544	\$2,242,730	3.0%
17	12/25/2010	\$59,800,480	\$56,482,042	\$3,318,438	5.9%	\$19,635,771	\$17,582,779	\$2,052,992	11.7%	\$79,436,251	\$74,064,821	\$5,371,430	7.3%
18	1/1/2011	\$61,423,121	\$57,952,304	\$3,470,817	6.0%	\$26,122,257	\$16,542,885	\$9,579,372	57.9%	\$87,545,378	\$74,495,189	\$13,050,189	17.5%
19	1/8/2011		\$53,471,476				\$17,025,616				\$70,497,092		
20	1/15/2011		\$50,524,929				\$17,489,048				\$68,013,977		
21	1/22/2011		\$51,372,320				\$17,908,259				\$69,280,579		
22	1/29/2011		\$51,826,337				\$19,026,658				\$70,852,995		
23	2/5/2011		\$61,705,135				\$20,262,181				\$81,967,316		
24	2/12/2011		\$57,505,343				\$18,530,781				\$76,036,124		
25	2/19/2011		\$58,716,226				\$19,257,668				\$77,973,894		
26	2/26/2011		\$57,442,427				\$20,116,011				\$77,558,438		
27	3/5/2011		\$61,437,946				\$21,859,136				\$83,297,082		
28	3/12/2011		\$57,400,063				\$19,979,112				\$77,379,175		
29	3/19/2011		\$54,714,545				\$18,159,358				\$72,873,903		
30	3/26/2011		\$54,229,797				\$18,841,604				\$73,071,401		
31	4/2/2011		\$56,585,236				\$20,062,318				\$76,647,554		
32	4/9/2011		\$54,933,349				\$21,849,425				\$76,782,774		
33	4/16/2011		\$54,850,820				\$22,579,780				\$77,430,600		
34	4/23/2011		\$53,419,824				\$23,249,268				\$76,669,092		
35	4/30/2011		\$53,739,981				\$23,389,542				\$77,129,523		
36	5/7/2011		\$55,268,772				\$23,228,705				\$78,497,477		
37	5/14/2011		\$52,953,124				\$20,813,409				\$73,766,533		
38	5/21/2011		\$51,514,826				\$21,691,660				\$73,206,486		
39	5/28/2011		\$50,850,956				\$22,028,914				\$72,879,870		
40	6/4/2011		\$52,241,131				\$17,819,550				\$70,060,681		
41	6/11/2011		\$50,772,479				\$16,820,362				\$67,592,841		
42	6/18/2011		\$49,726,112				\$16,959,981				\$66,686,093		

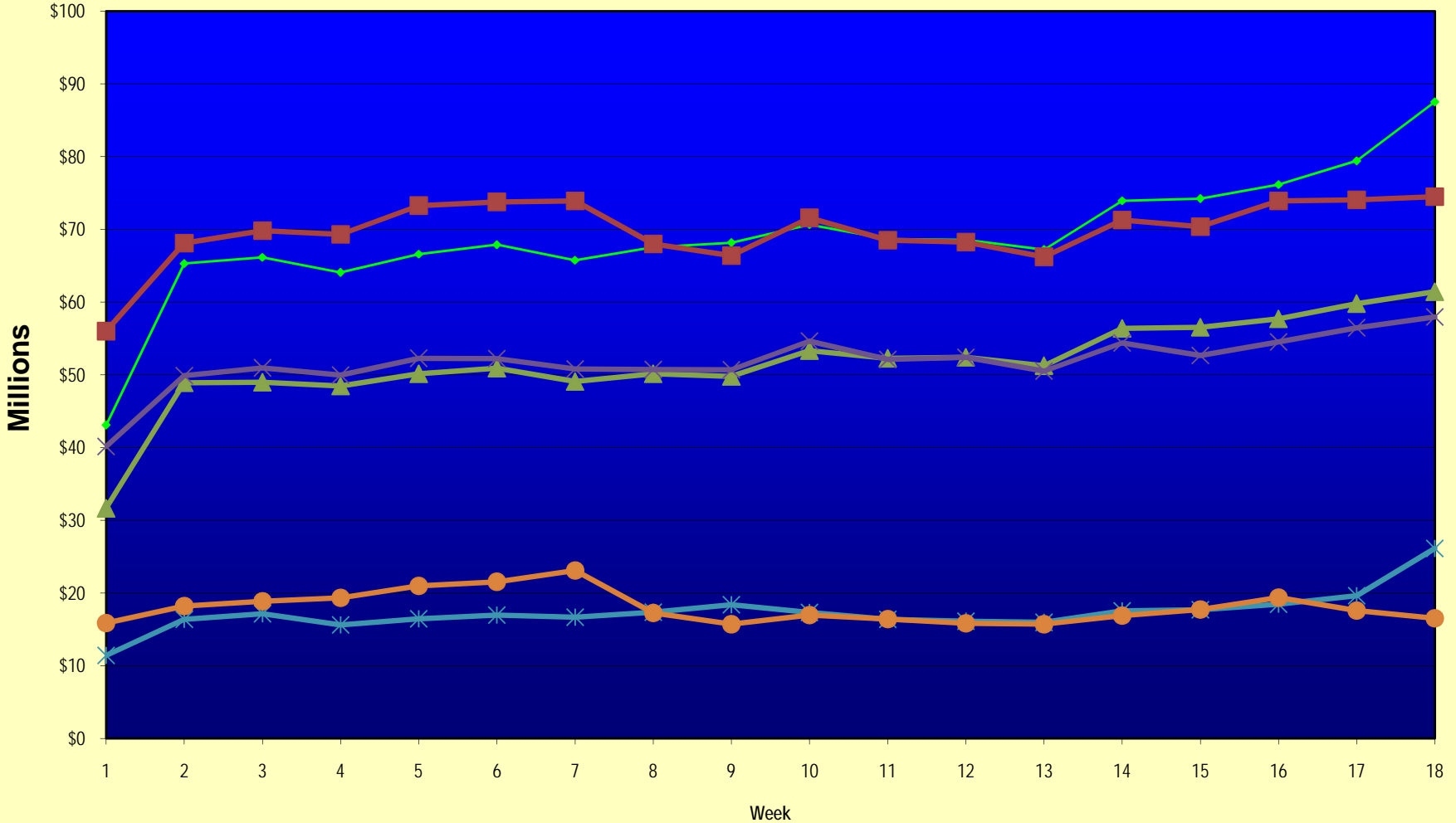
Note: Week 1 is not a full week of sales as this report is prepared on a Fiscal Year basis.

Texas Lottery Commission  
Fiscal Year Over Year Change in Sales  
Unaudited  
FY 2011 Compared to FY 2010

Week	FY 2011 Week Ending	INSTANT TICKETS				ON-LINE GAMES				TOTAL SALES			
		FY 2011	FY 2010	Difference	% change - Cumulative Sales	FY 2011	FY 2010	Difference	% change - Cumulative Sales	FY 2011	FY 2010	Difference	% change - Cumulative Sales
43	6/25/2011		\$49,418,265				\$16,721,308				\$66,139,573		
44	7/2/2011		\$51,856,978				\$16,599,581				\$68,456,559		
45	7/9/2011		\$51,424,550				\$16,765,950				\$68,190,500		
46	7/16/2011		\$50,568,531				\$16,932,672				\$67,501,203		
47	7/23/2011		\$50,839,051				\$16,336,723				\$67,175,774		
48	7/30/2011		\$50,649,830				\$17,033,288				\$67,683,118		
49	8/6/2011		\$53,006,942				\$17,061,563				\$70,068,505		
50	8/13/2011		\$48,763,084				\$16,795,782				\$65,558,866		
51	8/20/2011		\$47,378,934				\$17,566,052				\$64,944,986		
52	8/27/2011		\$47,200,948				\$17,646,347				\$64,847,295		
53	8/31/2011		\$19,227,838				\$5,032,822				\$24,260,660		
Total thru Current Week		\$929,283,935	\$933,435,118	(\$4,151,183)	-0.4%	\$311,782,520	\$323,955,841	(\$12,173,321)	-3.8%	\$1,241,066,455	\$1,257,390,959	(\$16,324,504)	-1.3%
Fiscal Year Total		\$929,283,935	\$2,760,973,223			\$311,782,520	\$977,396,264			\$1,241,066,455	\$3,738,369,487		

\*\* FY 2011 includes 4 days; FY 2010 includes 5 days

### Texas Lottery Commission Fiscal Year Over Year Change in Sales



◆ Total Sales 2011    
 ■ Total Sales 2010    
 ▲ Instant Tickets 2011    
 ✕ Instant Tickets 2010    
 ✕ On-Line Games 2011    
 ● On-Line Games 2010

Note: Week 1 is not a full week of sales as this report is prepared on a Fiscal Year basis.

Texas Lottery Commission  
Instant Tickets by Price Point  
Sales, Prize Expense, Sales Contribution and Payout Percentage With Year Over Year Changes  
Unaudited

Fiscal Year	Price Point	# of Active Games	FY Sales	% of Instant Ticket Sales	Year over Year Change in Sales	FY Prize Expense	Year over Year Change in Prize Expense	FY Sales Contribution	Year over Year Change in Contribution	Average Prize Payout %	Year over Year Change in Payout %
2010	\$1.00	28	78,264,609	8.4%		47,041,661		31,222,948		60.1%	0.0%
thru	\$2.00	31	133,651,804	14.3%		88,302,172		45,349,632		66.1%	1.4%
1/2/2010	\$3.00	15	116,657,205	12.5%		76,697,863		39,959,342		65.7%	0.2%
	\$5.00	34	267,368,263	28.6%		181,626,315		85,741,948		67.9%	-0.1%
	\$7.00	5	38,470,187	4.1%		26,158,834		12,311,353		68.0%	0.0%
	\$10.00	12	133,577,750	14.3%		93,438,668		40,139,082		70.0%	0.0%
	\$20.00	5	140,816,200	15.1%		105,111,240		35,704,960		74.6%	2.1%
	\$50.00	2	24,629,100	2.6%		19,078,852		5,550,248		77.5%	3.9%
<b>Total</b>		<b>132</b>	<b>\$933,435,118</b>			<b>\$637,455,605</b>		<b>\$295,979,513</b>		<b>68.3%</b>	<b>0.8%</b>
2011	\$1.00	26	67,185,145	7.2%		41,511,549		25,673,596		61.8%	2.8%
thru	\$2.00	25	133,356,794	14.4%		87,300,880		46,055,914		65.5%	0.5%
1/1/2011	\$3.00	17	114,212,579	12.3%		74,998,372		39,214,207		65.7%	0.1%
	\$5.00	35	300,566,380	32.3%		204,624,030		95,942,350		68.1%	0.1%
	\$7.00	6	38,426,717	4.1%		26,119,990		12,306,727		68.0%	0.0%
	\$10.00	12	121,499,760	13.1%		85,860,360		35,639,400		70.7%	1.0%
	\$20.00	5	121,483,360	13.1%		90,109,194		31,374,166		74.2%	1.4%
	\$50.00	2	32,553,200	3.5%		25,272,494		7,280,706		77.6%	4.1%
<b>Total</b>		<b>128</b>	<b>\$929,283,935</b>			<b>\$635,796,869</b>		<b>\$293,487,066</b>		<b>68.4%</b>	<b>1.0%</b>
Variance	\$1.00	-2	-11,079,464		-14.2%	-5,530,112	-11.8%	-5,549,352	-17.8%	1.68%	
2011 to	\$2.00	-6	-295,010		-0.2%	-1,001,292	-1.1%	706,282	1.6%	-0.60%	
2010	\$3.00	2	-2,444,626		-2.1%	-1,699,492	-2.2%	-745,134	-1.9%	-0.08%	
	\$5.00	1	33,198,117		12.4%	22,997,716	12.7%	10,200,401	11.9%	0.15%	
	\$7.00	1	-43,470		-0.1%	-38,844	-0.1%	-4,626	0.0%	-0.02%	
	\$10.00	0	-12,077,990		-9.0%	-7,578,309	-8.1%	-4,499,681	-11.2%	0.72%	
	\$20.00	0	-19,332,840		-13.7%	-15,002,046	-14.3%	-4,330,794	-12.1%	-0.47%	
	\$50.00	0	7,924,100		32.2%	6,193,642	32.5%	1,730,458	31.2%	0.17%	
<b>Total</b>		<b>-4</b>	<b>-\$4,151,183</b>		<b>-0.4%</b>	<b>-\$1,658,736</b>	<b>-0.3%</b>	<b>-\$2,492,447</b>	<b>-0.8%</b>	<b>0.13%</b>	

Texas Lottery Commission  
**Instant Tickets by Price Point**  
**Sales, Prize Expense, Sales Contribution and Payout Percentage With Year Over Year Changes**  
 Unaudited

Notes - Instant Ticket Variances

		FY 2011		FY 2010		Difference
Sales	\$1 - \$7		\$653,747,615		\$634,412,068	\$19,335,547
Prize Exp.	\$1 - \$7		\$434,554,821		\$419,826,845	\$14,727,977
Sales Cont.	\$1 - \$7		\$219,192,794		\$214,585,223	\$4,607,570
Prize Exp. %	\$1 - \$7		66.5%		66.2%	0.3%
		FY 2011		FY 2010		Difference
Sales	\$10 - \$50		\$275,536,320		\$299,023,050	-\$23,486,730
Prize Exp.	\$10 - \$50		\$201,242,047		\$217,628,760	-\$16,386,712
Sales Cont.	\$10 - \$50		\$74,294,273		\$81,394,290	-\$7,100,018
Prize Exp. %	\$10 - \$50		73.0%		72.8%	0.3%
		FY 2011		FY 2010		Difference
Sales	Instant		\$929,283,935		\$933,435,118	-\$4,151,183
Prize Exp.	Instant		\$635,796,869		\$637,455,605	-\$1,658,736
Sales Cont.	Instant		\$293,487,066		\$295,979,513	-\$2,492,447
Prize Exp. %	Instant		68.4%		68.3%	0.1%

		FY 2011		FY 2010		Difference
Sales	\$1 - \$10		\$775,247,375		\$767,989,818	\$7,257,557
Prize Exp.	\$1 - \$10		\$520,415,181		\$513,265,513	\$7,149,668
Sales Cont.	\$1 - \$10		\$254,832,194		\$254,724,305	\$107,889
Prize Exp. %	\$1 - \$10		67.1%		66.8%	0.3%
		FY 2011		FY 2010		Difference
Sales	\$20 - \$50		\$154,036,560		\$165,445,300	-\$11,408,740
Prize Exp.	\$20 - \$50		\$115,381,688		\$124,190,092	-\$8,808,404
Sales Cont.	\$20 - \$50		\$38,654,872		\$41,255,208	-\$2,600,336
Prize Exp. %	\$20 - \$50		74.9%		75.1%	-0.2%
		FY 2011		FY 2010		Difference
Sales	Instant		\$929,283,935		\$933,435,118	-\$4,151,183
Prize Exp.	Instant		\$635,796,869		\$637,455,605	-\$1,658,736
Sales Cont.	Instant		\$293,487,066		\$295,979,513	-\$2,492,447
Prize Exp. %	Instant		68.4%		68.3%	0.1%

Texas Lottery Commission  
**Weekly Sales Summary**  
**& Comparison to Previous Week**  
 Unaudited

	<u>THIS WEEK</u>	% of <u>Sales</u>	<u>LAST WEEK</u>	% of <u>Sales</u>	<u>\$ change</u>	<u>% change</u>
Total Sales	<u>\$87,545,378</u>		<u>\$79,436,251</u>		<u>\$8,109,127</u>	10.21%
Instant Tickets	<u>\$61,423,121</u>	70.2%	<u>\$59,800,480</u>	75.3%	<u>\$1,622,641</u>	2.71%
Lotto	\$3,359,890	3.8%	\$3,068,654	3.9%	\$291,236	9.49%
Pick 3	\$5,077,612	5.8%	\$5,231,226	6.6%	-\$153,614	-2.94%
Pick 3 Sum It Up	\$102,834	0.1%	\$107,702	0.1%	-\$4,868	-4.52%
Cash Five	\$1,237,160	1.4%	\$1,204,856	1.5%	\$32,304	2.68%
Texas Two Step	\$811,499	0.9%	\$868,156	1.1%	-\$56,657	-6.53%
Mega Millions	\$10,941,746	12.5%	\$5,351,969	6.7%	\$5,589,777	104.44%
Megaplier	\$1,800,536	2.1%	\$985,293	1.2%	\$815,243	82.74%
Daily 4	\$1,071,712	1.2%	\$1,104,373	1.4%	-\$32,661	-2.96%
Daily 4 Sum It Up	\$84,683	0.1%	\$87,086	0.1%	-\$2,403	-2.76%
Powerball	\$1,300,553	1.5%	\$1,295,059	1.6%	\$5,494	0.42%
Power Play	\$334,032	0.4%	\$331,397	0.4%	\$2,635	0.80%
Total Online Sales	<u>\$26,122,257</u>		<u>\$19,635,771</u>		<u>\$6,486,486</u>	33.03%

\* Totals may not sum due to rounding.

Texas Lottery Commission  
Weekly Sales Summary  
Unaudited

INSTANT TICKETS  
TOP TEN SELLING GAMES

For the Week Ending : 01/01/2011

Rank	Price Point	Game	Sales (Millions)
1	\$ 5	CRAZY WILD 5's	\$ 4.200
2	\$ 20	\$500,000,000 BLOCKBUSTER	\$ 3.537
3	\$ 10	WINTER BUCKS	\$ 3.435
4	\$ 5	RUBY RED 5's	\$ 2.986
5	\$ 20	PLATINUM PRESENT	\$ 2.833
6	\$ 5	SEASON'S GOLD	\$ 2.489
7	\$ 5	HOLIDAY RICHES	\$ 2.096
8	\$ 3	MONOPOLY	\$ 2.026
9	\$ 2	BREAK THE BANK	\$ 1.713
10	\$ 3	BONUS CASHWORD	\$ 1.671

Texas Lottery Commission  
Prize Payout Tracking Report  
Unaudited

Through Week Ending 01/01/2011

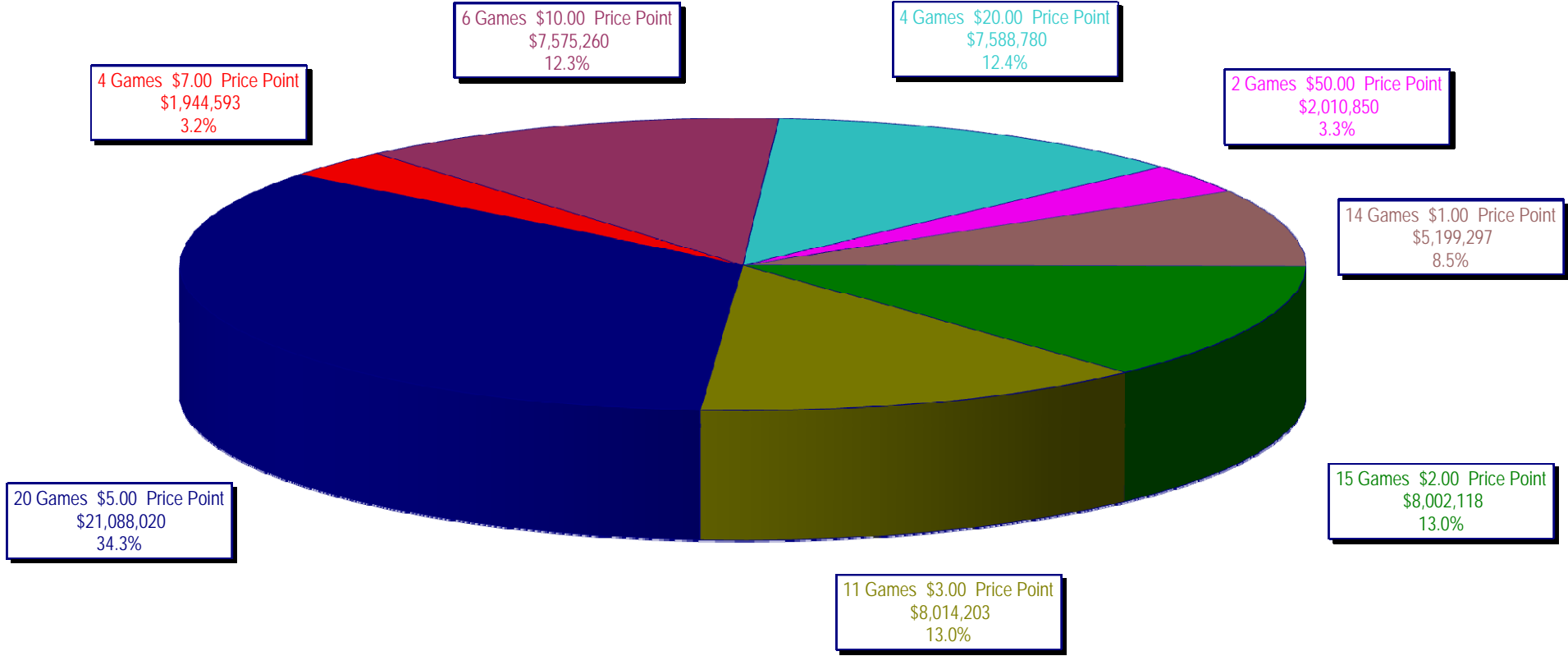
On-Line Sales

		FY Sales Through Week Ending 1/1/2011		FY Prize Expense Through Week Ending 1/1/2011	Actual* Prize Payout	Base Payout (Prize Pool)
Lotto	\$	56,888,738	\$	37,431,499	65.80%	50.00%
Pick 3		91,286,987		43,433,239	47.58%	50.00%
Pick 3 Sum It Up		1,852,537		851,475	45.96%	50.00%
Cash Five		21,558,037		10,779,784	50.00%	50.00%
Texas Two Step		16,403,896		8,133,100	49.58%	50.00%
Mega Millions		56,815,779		27,029,992	47.57%	50.00%**
Megaplier		11,822,839		6,185,032	52.31%	N/A
Daily 4		18,952,785		8,575,000	45.24%	50.00%
Daily 4 Sum It Up		1,490,970		682,567	45.78%	50.00%
Powerball		27,935,124		14,734,364	52.74%	50.00%
Power Play		6,774,828		4,275,242	63.10%	50.00%
<b>Totals</b>	\$	<b>311,782,520</b>	\$	<b>162,111,294</b>	<b>51.99%</b>	

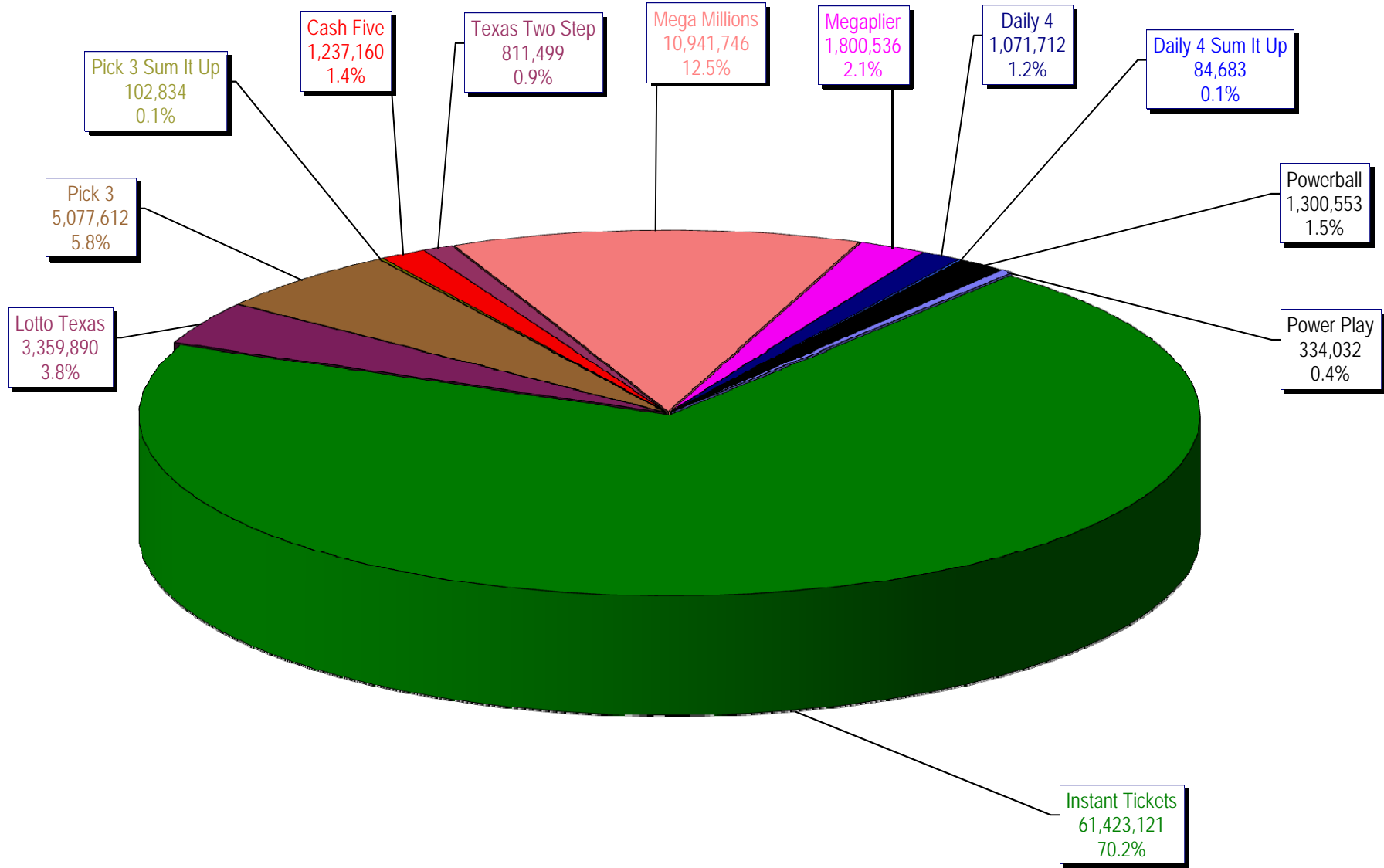
\* Before Unclaimed Prizes

\*\* Estimated; depends on # of guaranteed prizes won in Texas

Texas Lottery Commission  
Instant Ticket Sales  
For the Week Ending 01/01/2011  
(Unaudited)



**Texas Lottery Commission  
All Game Sales  
For the Week Ending 01/01/2011  
(Unaudited)**



Texas Lottery Commission - Weekly Sales Summary for FY 2011 (Unaudited)

Week Ended	Instant Games	New Games & Dates	Lotto Texas	Jackpot W S		Pick 3	Pick 3 Sum It Up	Cash Five	Texas Two Step	Jackpot M TH		Mega Millions	Jackpot T F		Megaplier	Daily 4	Daily 4 Sum It Up	Powerball	Jackpot W S		Power Play	Total	Per Cap.
9/4/2010	50,886,871	1251 (\$3,N); 1248 (\$5,N) - 08/30/10	3,238,939	4	5	5,133,180	99,799	1,255,137	907,736	275	375	2,216,782	12	16	525,380	1,081,186	85,150	1,543,448	34	47	376,802	67,350,410	2.72
9/11/2010	48,912,598	1147 (\$2,N) - 09/06/10 1346 (\$10,N) - 09/09/10	3,154,833	6	7	5,202,514	97,823	1,211,276	762,324	200	225	2,195,801	25	34	519,467	1,065,276	82,080	1,709,056	62	79	397,711	65,310,758	2.64
9/18/2010	48,988,241	1281 (\$1,N); 1246 (\$5,N) - 09/13/10	3,172,150	8	4	5,124,056	99,166	1,220,135	791,490	275	200	2,434,917	44	54	561,933	1,057,398	82,257	2,156,491	94	112	466,834	66,155,068	2.67
9/25/2010	48,471,310	1313 (\$2,N) - 09/20/10	3,103,083	5	6	4,971,566	95,270	1,212,530	772,370	225	200	2,067,112	12	16	496,860	1,036,994	79,412	1,430,615	20	25	358,001	64,095,123	2.59
10/2/2010	50,145,138	1234 (\$5,N) - 09/27/10	3,222,746	7	8	5,204,986	104,577	1,234,899	823,382	225	275	2,240,144	23	32	528,413	1,076,154	86,262	1,552,770	35	48	379,608	66,599,077	2.69
10/9/2010	50,918,591	0.00	3,280,138	9	10	5,314,323	117,023	1,225,735	1,029,730	375	500	2,412,454	41	51	555,007	1,071,718	84,446	1,512,464	60	20	371,925	67,893,554	2.74
10/16/2010	49,096,011	1284 (\$7,N); 1285 (\$20,N) - 10/11/10	3,296,700	11	12	5,063,257	106,357	1,194,375	925,090	650	200	2,715,784	61	72	594,908	1,018,024	78,845	1,326,299	25	34	342,265	65,757,915	2.65
10/23/2010	50,158,946	1286 (\$1,N); 1287 (\$5,N) - 10/18/10 1344 (\$1,N) - 10/20/10	3,335,547	13	14	5,032,655	106,948	1,199,133	825,573	225	275	3,316,557	86	101	682,142	1,012,732	78,498	1,428,095	46	59	356,580	67,533,406	2.73
10/30/2010	49,775,287	1243 (\$2,N) - 10/25/10 1345 (\$3,N) - 10/27/10	3,381,643	15	16	5,024,213	106,782	1,187,956	823,604	375	200	3,953,547	118	140	780,698	1,060,330	83,556	1,609,281	72	87	390,600	68,177,496	2.75
11/6/2010	53,337,848	1237 (\$1,N); 1290 (\$10,N) - 11/01/10	3,077,378	4	5	5,272,446	108,946	1,236,736	834,465	225	275	2,115,522	12	16	503,490	1,113,528	89,447	2,450,557	104	123	519,393	70,659,756	2.85
11/13/2010	52,285,479	1289 (\$3,N); 1291 (\$5,N) - 11/08/10	3,119,350	6	7	5,326,172	109,316	1,235,631	1,019,783	375	500	2,123,118	25	12	506,225	1,099,192	87,965	1,407,333	20	25	354,606	68,674,169	2.77
11/20/2010	52,424,036	1288 (\$2,N) - 11/15/10	3,162,292	8	9	5,124,861	104,372	1,234,396	795,125	200	225	2,132,040	16	25	513,725	1,064,835	84,612	1,543,690	35	50	378,075	68,562,058	2.77
11/27/2010	51,262,518	1280 (\$1,N); 1292 (\$5,N) - 11/22/10	3,149,608	10	11	4,923,209	98,827	1,167,907	823,798	275	375	2,138,067	34	42	504,292	1,022,779	81,580	1,659,305	64	79	397,704	67,229,593	2.71
12/4/2010	56,385,259	0	3,209,886	12	4	5,363,547	109,244	1,253,990	1,186,124	475	625	2,557,727	52	62	583,255	1,122,484	89,338	1,676,877	95	20	400,704	73,938,434	2.98
12/11/2010	56,540,048	1294 (\$1,N); 1282 (\$5,N) - 12/06/10	3,017,170	4	5	5,249,891	105,120	1,247,150	1,610,514	775	1,000	2,939,445	74	88	635,353	1,112,322	86,776	1,349,316	25	37	350,296	74,243,400	3.00
12/18/2010	57,699,991	1296 (\$3,N) - 12/13/10	3,109,357	6	7	5,252,987	103,488	1,245,192	1,210,115	1,200	200	3,933,829	104	123	784,466	1,102,301	86,146	1,297,373	20	25	340,030	76,165,273	3.07
12/25/2010	59,800,480	1299 (\$1,N); 1229 (\$5,N) - 12/20/10	3,068,654	8	9	5,231,226	107,702	1,204,856	868,156	225	275	5,351,969	145	168	985,293	1,104,373	87,086	1,295,059	35	46	331,397	79,436,251	3.21
1/1/2011	61,423,121	0	3,359,890	10	11	5,077,612	102,834	1,237,160	811,499	200	225	10,941,746	200	242	1,800,536	1,071,712	84,683	1,300,553	20	25	334,032	87,545,378	3.53
weekly change	2.7%		9.5%			-2.9%	-4.5%	2.7%	-6.5%			104.4%			82.7%	-3.0%	-2.8%	0.4%			0.8%	10.2%	
	<b>SALES</b>		<b>SALES</b>			<b>SALES</b>	<b>SALES</b>	<b>SALES</b>	<b>SALES</b>			<b>SALES</b>	<b>SALES</b>	<b>SALES</b>	<b>SALES</b>	<b>SALES</b>	<b>SALES</b>	<b>SALES</b>	<b>SALES</b>	<b>SALES</b>	<b>SALES</b>	<b>% of Sales</b>	
Startup to date	39,962,375,457		10,792,395,533			3,944,422,580	19,611,473	2,277,742,523	543,255,397			1,365,708,621			314,728,026	161,311,070	20,028,820	83,272,572			19,909,544	59,712,895,587	100.0%
Calendar Year to date	2,773,358,806		221,085,282			271,737,015	129,025	65,357,567	50,171,081			159,561,164			34,727,797	55,006,509	4,608,127	83,272,572			19,909,544	3,635,742,372	100.0%
Fiscal Year to date 2011	929,283,935		56,888,738			91,286,987	1,852,537	21,558,037	16,403,896			56,815,779			11,822,839	18,952,785	1,490,970	27,935,124			6,774,828	1,241,066,455	100.0%