



WEEKLY SALES SUMMARY

Unaudited

[Week Ending: 01/08/2011](#)

Texas Lottery Commission
Fiscal Year to Date Sales Comparison
Unaudited

Through the week ending 01/08/2011 (19 weeks)

Sales by Game	FY 2009 *	FY 2010 **	FY 2011	\$ Change		% Change	
				FY 2011 to FY 2009	FY 2011 to FY 2010 to	FY 2011 to FY 2009	FY 2011 to FY 2010
Instants	\$ 980,700,646	\$ 986,906,594	\$ 990,260,588	\$ 9,559,942	\$ 3,353,994	1.0%	0.3%
Lotto Texas	65,653,172	98,234,970	60,596,205	-5,056,967	-37,638,765	-7.7%	-38.3%
Pick 3	100,726,618	95,828,068	96,580,320	-4,146,298	752,252	-4.1%	0.8%
Pick 3 Sum It Up	2,132,526	1,910,059	1,960,897	-171,630	50,838	-8.0%	2.7%
Cash Five	25,628,278	24,173,591	22,877,024	-2,751,254	-1,296,567	-10.7%	-5.4%
Texas Two Step	16,577,266	16,387,454	17,223,518	646,252	836,064	3.9%	5.1%
Mega Millions	62,054,615	68,691,007	73,606,459	11,551,845	4,915,452	18.6%	7.2%
Megaplier	14,712,323	15,398,510	14,191,162	-521,161	-1,207,348	-3.5%	-7.8%
Daily 4	15,287,673	18,569,389	20,025,694	4,738,021	1,456,306	31.0%	7.8%
Daily 4 Sum It Up	1,957,363	1,788,409	1,576,860	-380,503	-211,550	-19.4%	-11.8%
Powerball	-	-	29,511,170	29,511,170	29,511,170	-	-
Power Play	-	-	7,154,781	7,154,781	7,154,781	-	-
Total	\$ 1,285,430,479	\$ 1,327,888,050	\$ 1,335,564,677	\$ 50,134,199	\$ 7,676,627	3.9%	0.6%

* 2 extra days ** 1 extra day

Texas Lottery Commission
Fiscal Year to Date Cumulative Average Sales Comparison
Unaudited

Through the week ending 01/08/2011 (19 weeks)

Sales by Game	FY 2009	FY 2010	FY 2011
Instant	\$ 7,429,550	\$ 7,533,638	\$ 7,617,389
Lotto Texas	497,373	749,885	466,125
Pick 3	763,080	731,512	742,926
Pick 3 Sum It Up	16,156	14,581	15,084
Cash Five	194,154	184,531	175,977
Texas Two Step	125,585	125,095	132,489
Mega Millions	470,111	524,359	566,204
Megaplier	111,457	117,546	109,163
Daily 4	115,816	141,751	154,044
Daily 4 Sum It Up	14,829	13,652	12,130
Powerball	-	-	227,009
Power Play	-	-	55,037
Total	\$ 9,738,110	\$ 10,136,550	\$ 10,273,574
	thru 01/10/2009 132 days	thru 01/09/2010 131 days	thru 01/08/2011 130 days

Texas Lottery Commission
Fiscal Year Over Year Change in Sales
Unaudited
FY 2011 Compared to FY 2010

Week	FY 2011 Week Ending	INSTANT TICKETS				ON-LINE GAMES				TOTAL SALES			
		FY 2011	FY 2010	Difference	% change - Cumulative Sales	FY 2011	FY 2010	Difference	% change - Cumulative Sales	FY 2011	FY 2010	Difference	% change - Cumulative Sales
1	9/4/2010**	\$31,659,033	\$40,148,241	(\$8,489,208)	-21.1%	\$11,430,717	\$15,859,194	(\$4,428,478)	-27.9%	\$43,089,750	\$56,007,435	(\$12,917,686)	-23.1%
2	9/11/2010	\$48,912,598	\$49,896,100	(\$983,502)	-2.0%	\$16,398,160	\$18,206,315	(\$1,808,155)	-9.9%	\$65,310,758	\$68,102,415	(\$2,791,657)	-4.1%
3	9/18/2010	\$48,988,241	\$50,971,937	(\$1,983,696)	-3.9%	\$17,166,827	\$18,859,622	(\$1,692,795)	-9.0%	\$66,155,068	\$69,831,559	(\$3,676,491)	-5.3%
4	9/25/2010	\$48,471,310	\$49,975,243	(\$1,503,933)	-3.0%	\$15,623,813	\$19,345,435	(\$3,721,622)	-19.2%	\$64,095,123	\$69,320,678	(\$5,225,555)	-7.5%
5	10/2/2010	\$50,145,138	\$52,283,569	(\$2,138,431)	-4.1%	\$16,453,939	\$20,991,695	(\$4,537,756)	-21.6%	\$66,599,077	\$73,275,264	(\$6,676,187)	-9.1%
6	10/9/2010	\$50,918,591	\$52,238,261	(\$1,319,670)	-2.5%	\$16,974,963	\$21,547,439	(\$4,572,476)	-21.2%	\$67,893,554	\$73,785,700	(\$5,892,146)	-8.0%
7	10/16/2010	\$49,096,011	\$50,806,599	(\$1,710,588)	-3.4%	\$16,661,904	\$23,114,594	(\$6,452,690)	-27.9%	\$65,757,915	\$73,921,193	(\$8,163,278)	-11.0%
8	10/23/2010	\$50,158,946	\$50,731,592	(\$572,646)	-1.1%	\$17,374,460	\$17,274,411	\$100,049	0.6%	\$67,533,406	\$68,006,003	(\$472,598)	-0.7%
9	10/30/2010	\$49,775,287	\$50,684,853	(\$909,566)	-1.8%	\$18,402,209	\$15,710,720	\$2,691,489	17.1%	\$68,177,496	\$66,395,573	\$1,781,923	2.7%
10	11/6/2010	\$53,337,848	\$54,633,928	(\$1,296,080)	-2.4%	\$17,321,908	\$16,961,611	\$360,297	2.1%	\$70,659,756	\$71,595,539	(\$935,784)	-1.3%
11	11/13/2010	\$52,285,479	\$52,109,218	\$176,261	0.3%	\$16,388,690	\$16,407,349	(\$18,660)	-0.1%	\$68,674,169	\$68,516,567	\$157,602	0.2%
12	11/20/2010	\$52,424,036	\$52,427,881	(\$3,845)	0.0%	\$16,138,022	\$15,829,561	\$308,461	1.9%	\$68,562,058	\$68,257,442	\$304,616	0.4%
13	11/27/2010	\$51,262,518	\$50,519,477	\$743,041	1.5%	\$15,967,075	\$15,710,447	\$256,628	1.6%	\$67,229,593	\$66,229,924	\$999,669	1.5%
14	12/4/2010	\$56,385,259	\$54,376,448	\$2,008,811	3.7%	\$17,553,175	\$16,905,341	\$647,835	3.8%	\$73,938,434	\$71,281,789	\$2,656,646	3.7%
15	12/11/2010	\$56,540,048	\$52,654,632	\$3,885,416	7.4%	\$17,703,352	\$17,726,695	(\$23,343)	-0.1%	\$74,243,400	\$70,381,327	\$3,862,073	5.5%
16	12/18/2010	\$57,699,991	\$54,542,793	\$3,157,198	5.8%	\$18,465,282	\$19,379,751	(\$914,469)	-4.7%	\$76,165,273	\$73,922,544	\$2,242,730	3.0%
17	12/25/2010	\$59,800,480	\$56,482,042	\$3,318,438	5.9%	\$19,635,771	\$17,582,779	\$2,052,992	11.7%	\$79,436,251	\$74,064,821	\$5,371,430	7.3%
18	1/1/2011	\$61,423,121	\$57,952,304	\$3,470,817	6.0%	\$26,122,257	\$16,542,885	\$9,579,372	57.9%	\$87,545,378	\$74,495,189	\$13,050,189	17.5%
19	1/8/2011	\$60,976,653	\$53,471,476	\$7,505,177	14.0%	\$33,521,570	\$17,025,616	\$16,495,954	96.9%	\$94,498,223	\$70,497,092	\$24,001,131	34.0%
20	1/15/2011		\$50,524,929				\$17,489,048				\$68,013,977		
21	1/22/2011		\$51,372,320				\$17,908,259				\$69,280,579		
22	1/29/2011		\$51,826,337				\$19,026,658				\$70,852,995		
23	2/5/2011		\$61,705,135				\$20,262,181				\$81,967,316		
24	2/12/2011		\$57,505,343				\$18,530,781				\$76,036,124		
25	2/19/2011		\$58,716,226				\$19,257,668				\$77,973,894		
26	2/26/2011		\$57,442,427				\$20,116,011				\$77,558,438		
27	3/5/2011		\$61,437,946				\$21,859,136				\$83,297,082		
28	3/12/2011		\$57,400,063				\$19,979,112				\$77,379,175		
29	3/19/2011		\$54,714,545				\$18,159,358				\$72,873,903		
30	3/26/2011		\$54,229,797				\$18,841,604				\$73,071,401		
31	4/2/2011		\$56,585,236				\$20,062,318				\$76,647,554		
32	4/9/2011		\$54,933,349				\$21,849,425				\$76,782,774		
33	4/16/2011		\$54,850,820				\$22,579,780				\$77,430,600		
34	4/23/2011		\$53,419,824				\$23,249,268				\$76,669,092		
35	4/30/2011		\$53,739,981				\$23,389,542				\$77,129,523		
36	5/7/2011		\$55,268,772				\$23,228,705				\$78,497,477		
37	5/14/2011		\$52,953,124				\$20,813,409				\$73,766,533		
38	5/21/2011		\$51,514,826				\$21,691,660				\$73,206,486		
39	5/28/2011		\$50,850,956				\$22,028,914				\$72,879,870		
40	6/4/2011		\$52,241,131				\$17,819,550				\$70,060,681		
41	6/11/2011		\$50,772,479				\$16,820,362				\$67,592,841		
42	6/18/2011		\$49,726,112				\$16,959,981				\$66,686,093		

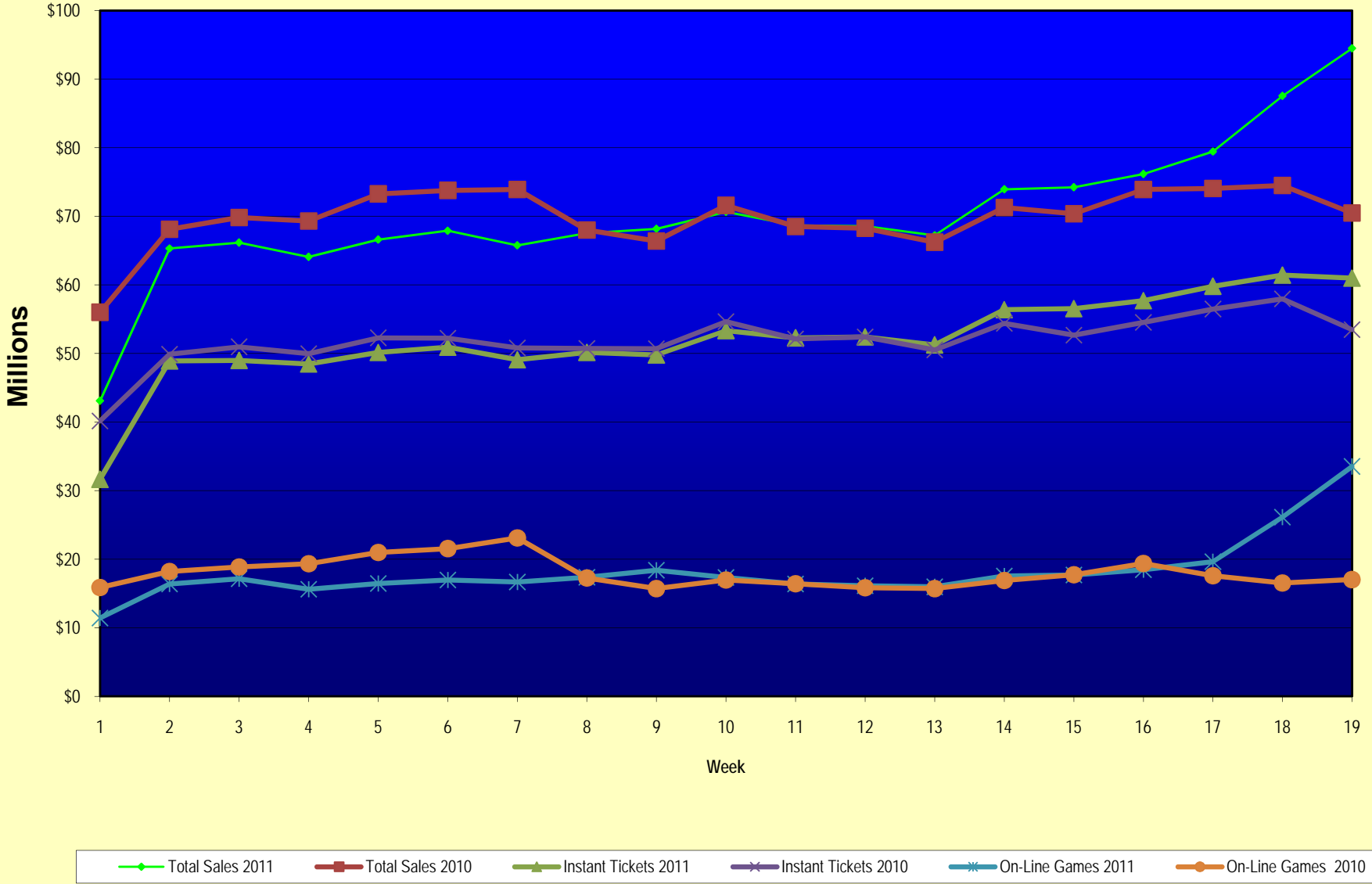
Note: Week 1 is not a full week of sales as this report is prepared on a Fiscal Year basis.

Texas Lottery Commission
Fiscal Year Over Year Change in Sales
Unaudited
FY 2011 Compared to FY 2010

Week	FY 2011 Week Ending	INSTANT TICKETS				ON-LINE GAMES				TOTAL SALES			
		FY 2011	FY 2010	Difference	% change - Cumulative Sales	FY 2011	FY 2010	Difference	% change - Cumulative Sales	FY 2011	FY 2010	Difference	% change - Cumulative Sales
43	6/25/2011		\$49,418,265				\$16,721,308				\$66,139,573		
44	7/2/2011		\$51,856,978				\$16,599,581				\$68,456,559		
45	7/9/2011		\$51,424,550				\$16,765,950				\$68,190,500		
46	7/16/2011		\$50,568,531				\$16,932,672				\$67,501,203		
47	7/23/2011		\$50,839,051				\$16,336,723				\$67,175,774		
48	7/30/2011		\$50,649,830				\$17,033,288				\$67,683,118		
49	8/6/2011		\$53,006,942				\$17,061,563				\$70,068,505		
50	8/13/2011		\$48,763,084				\$16,795,782				\$65,558,866		
51	8/20/2011		\$47,378,934				\$17,566,052				\$64,944,986		
52	8/27/2011		\$47,200,948				\$17,646,347				\$64,847,295		
53	8/31/2011		\$19,227,838				\$5,032,822				\$24,260,660		
Total thru Current Week		\$990,260,588	\$986,906,594	\$3,353,994	0.3%	\$345,304,089	\$340,981,456	\$4,322,633	1.3%	\$1,335,564,677	\$1,327,888,050	\$7,676,627	0.6%
Fiscal Year Total		\$990,260,588	\$2,760,973,223			\$345,304,089	\$977,396,264			\$1,335,564,677	\$3,738,369,487		

** FY 2011 includes 4 days; FY 2010 includes 5 days

Texas Lottery Commission Fiscal Year Over Year Change in Sales



Note: Week 1 is not a full week of sales as this report is prepared on a Fiscal Year basis.

Texas Lottery Commission
Instant Tickets by Price Point
Sales, Prize Expense, Sales Contribution and Payout Percentage With Year Over Year Changes
Unaudited

Fiscal Year	Price Point	# of Active Games	FY Sales	% of Instant Ticket Sales	Year over Year Change in Sales	FY Prize Expense	Year over Year Change in Prize Expense	FY Sales Contribution	Year over Year Change in Contribution	Average Prize Payout %	Year over Year Change in Payout %
2010	\$1.00	29	83,167,026	8.4%		49,987,007		33,180,019		60.1%	0.0%
thru	\$2.00	31	141,595,028	14.3%		93,465,826		48,129,202		66.0%	1.3%
1/9/2010	\$3.00	15	123,208,446	12.5%		81,007,245		42,201,201		65.7%	0.2%
	\$5.00	34	283,392,653	28.7%		192,518,821		90,873,832		67.9%	-0.1%
	\$7.00	5	40,129,481	4.1%		27,287,228		12,842,253		68.0%	0.0%
	\$10.00	13	142,736,480	14.5%		99,845,404		42,891,076		70.0%	0.0%
	\$20.00	5	146,805,280	14.9%		109,583,866		37,221,415		74.6%	2.1%
	\$50.00	2	25,872,200	2.6%		20,041,674		5,830,526		77.5%	3.9%
Total		134	\$986,906,594			\$673,737,070		\$313,169,524		68.3%	0.8%
2011	\$1.00	26	72,728,728	7.3%		44,909,986		27,818,742		61.7%	2.8%
thru	\$2.00	26	141,885,580	14.3%		92,850,034		49,035,546		65.4%	0.5%
1/8/2011	\$3.00	17	121,854,110	12.3%		79,996,927		41,857,183		65.6%	0.1%
	\$5.00	35	319,802,470	32.3%		217,709,344		102,093,126		68.1%	0.1%
	\$7.00	7	42,018,060	4.2%		28,561,440		13,456,620		68.0%	0.0%
	\$10.00	12	128,523,310	13.0%		90,839,615		37,683,695		70.7%	1.1%
	\$20.00	5	128,889,580	13.0%		95,613,509		33,276,071		74.2%	1.4%
	\$50.00	2	34,558,750	3.5%		26,829,695		7,729,055		77.6%	4.1%
Total		130	\$990,260,588			\$677,310,550		\$312,950,038		68.4%	0.9%
Variance	\$1.00	-3	-10,438,298		-12.6%	-5,077,020	-10.2%	-5,361,278	-16.2%	1.65%	
2011 to	\$2.00	-5	290,552		0.2%	-615,792	-0.7%	906,344	1.9%	-0.57%	
2010	\$3.00	2	-1,354,336		-1.1%	-1,010,318	-1.2%	-344,018	-0.8%	-0.10%	
	\$5.00	1	36,409,817		12.8%	25,190,523	13.1%	11,219,294	12.3%	0.14%	
	\$7.00	2	1,888,579		4.7%	1,274,213	4.7%	614,366	4.8%	-0.02%	
	\$10.00	-1	-14,213,170		-10.0%	-9,005,790	-9.0%	-5,207,380	-12.1%	0.73%	
	\$20.00	0	-17,915,700		-12.2%	-13,970,357	-12.7%	-3,945,343	-10.6%	-0.46%	
	\$50.00	0	8,686,550		33.6%	6,788,021	33.9%	1,898,529	32.6%	0.17%	
Total		-4	\$3,353,994		0.3%	\$3,573,475	0.5%	-\$219,485	-0.1%	0.13%	

Texas Lottery Commission
Instant Tickets by Price Point
Sales, Prize Expense, Sales Contribution and Payout Percentage With Year Over Year Changes
 Unaudited

Notes - Instant Ticket Variances

		FY 2011		FY 2010		Difference
Sales	\$1 - \$7		\$698,288,948		\$671,492,634	\$26,796,314
Prize Exp.	\$1 - \$7		\$464,027,731		\$444,266,126	\$19,761,605
Sales Cont.	\$1 - \$7		\$234,261,217		\$227,226,508	\$7,034,709
Prize Exp. %	\$1 - \$7		66.5%		66.2%	0.3%
		FY 2011		FY 2010		Difference
Sales	\$10 - \$50		\$291,971,640		\$315,413,960	-\$23,442,320
Prize Exp.	\$10 - \$50		\$213,282,818		\$229,470,944	-\$16,188,126
Sales Cont.	\$10 - \$50		\$78,688,822		\$85,943,016	-\$7,254,194
Prize Exp. %	\$10 - \$50		73.0%		72.8%	0.3%
		FY 2011		FY 2010		Difference
Sales	Instant		\$990,260,588		\$986,906,594	\$3,353,994
Prize Exp.	Instant		\$677,310,550		\$673,737,070	\$3,573,479
Sales Cont.	Instant		\$312,950,038		\$313,169,524	-\$219,485
Prize Exp. %	Instant		68.4%		68.3%	0.1%

		FY 2011		FY 2010		Difference
Sales	\$1 - \$10		\$826,812,258		\$814,229,114	\$12,583,144
Prize Exp.	\$1 - \$10		\$554,867,346		\$544,111,530	\$10,755,815
Sales Cont.	\$1 - \$10		\$271,944,912		\$270,117,584	\$1,827,329
Prize Exp. %	\$1 - \$10		67.1%		66.8%	0.3%
		FY 2011		FY 2010		Difference
Sales	\$20 - \$50		\$163,448,330		\$172,677,480	-\$9,229,150
Prize Exp.	\$20 - \$50		\$122,443,204		\$129,625,540	-\$7,182,336
Sales Cont.	\$20 - \$50		\$41,005,126		\$43,051,940	-\$2,046,814
Prize Exp. %	\$20 - \$50		74.9%		75.1%	-0.2%
		FY 2011		FY 2010		Difference
Sales	Instant		\$990,260,588		\$986,906,594	\$3,353,994
Prize Exp.	Instant		\$677,310,550		\$673,737,070	\$3,573,479
Sales Cont.	Instant		\$312,950,038		\$313,169,524	-\$219,485
Prize Exp. %	Instant		68.4%		68.3%	0.1%

Texas Lottery Commission
Weekly Sales Summary
& Comparison to Previous Week
 Unaudited

	<u>THIS WEEK</u>	% of <u>Sales</u>	<u>LAST WEEK</u>	% of <u>Sales</u>	<u>\$ change</u>	<u>% change</u>
Total Sales	<u>\$94,498,223</u>		<u>\$87,545,378</u>		<u>\$6,952,845</u>	7.94%
Instant Tickets	<u>\$60,976,653</u>	64.5%	<u>\$61,423,121</u>	70.2%	<u>-\$446,468</u>	-0.73%
Lotto	\$3,707,467	3.9%	\$3,359,890	3.8%	\$347,577	10.34%
Pick 3	\$5,293,334	5.6%	\$5,077,612	5.8%	\$215,722	4.25%
Pick 3 Sum It Up	\$108,360	0.1%	\$102,834	0.1%	\$5,526	5.37%
Cash Five	\$1,318,987	1.4%	\$1,237,160	1.4%	\$81,827	6.61%
Texas Two Step	\$819,622	0.9%	\$811,499	0.9%	\$8,123	1.00%
Mega Millions	\$16,790,680	17.8%	\$10,941,746	12.5%	\$5,848,934	53.46%
Megaplier	\$2,368,323	2.5%	\$1,800,536	2.1%	\$567,787	31.53%
Daily 4	\$1,072,909	1.1%	\$1,071,712	1.2%	\$1,198	0.11%
Daily 4 Sum It Up	\$85,890	0.1%	\$84,683	0.1%	\$1,207	1.42%
Powerball	\$1,576,046	1.7%	\$1,300,553	1.5%	\$275,493	21.18%
Power Play	\$379,953	0.4%	\$334,032	0.4%	\$45,921	13.75%
Total Online Sales	<u>\$33,521,570</u>		<u>\$26,122,257</u>		<u>\$7,399,313</u>	28.33%

* Totals may not sum due to rounding.

Texas Lottery Commission
Weekly Sales Summary
Unaudited

INSTANT TICKETS
TOP TEN SELLING GAMES

For the Week Ending : 01/08/2011

Rank	Price Point	Game	Sales (Millions)
1	\$ 20	\$500,000,000 BLOCKBUSTER	\$ 3.713
2	\$ 5	CRAZY WILD 5's	\$ 3.592
3	\$ 5	RUBY RED 5's	\$ 2.790
4	\$ 10	WINTER BUCKS	\$ 2.565
5	\$ 20	PLATINUM PRESENT	\$ 2.419
6	\$ 2	BREAK THE BANK	\$ 1.896
7	\$ 7	ROYAL 7S	\$ 1.882
8	\$ 3	BONUS CASHWORD	\$ 1.785
9	\$ 3	MONOPOLY	\$ 1.755
10	\$ 10	SET FOR LIFE	\$ 1.695

Texas Lottery Commission
Prize Payout Tracking Report
Unaudited

Through Week Ending 01/08/2011

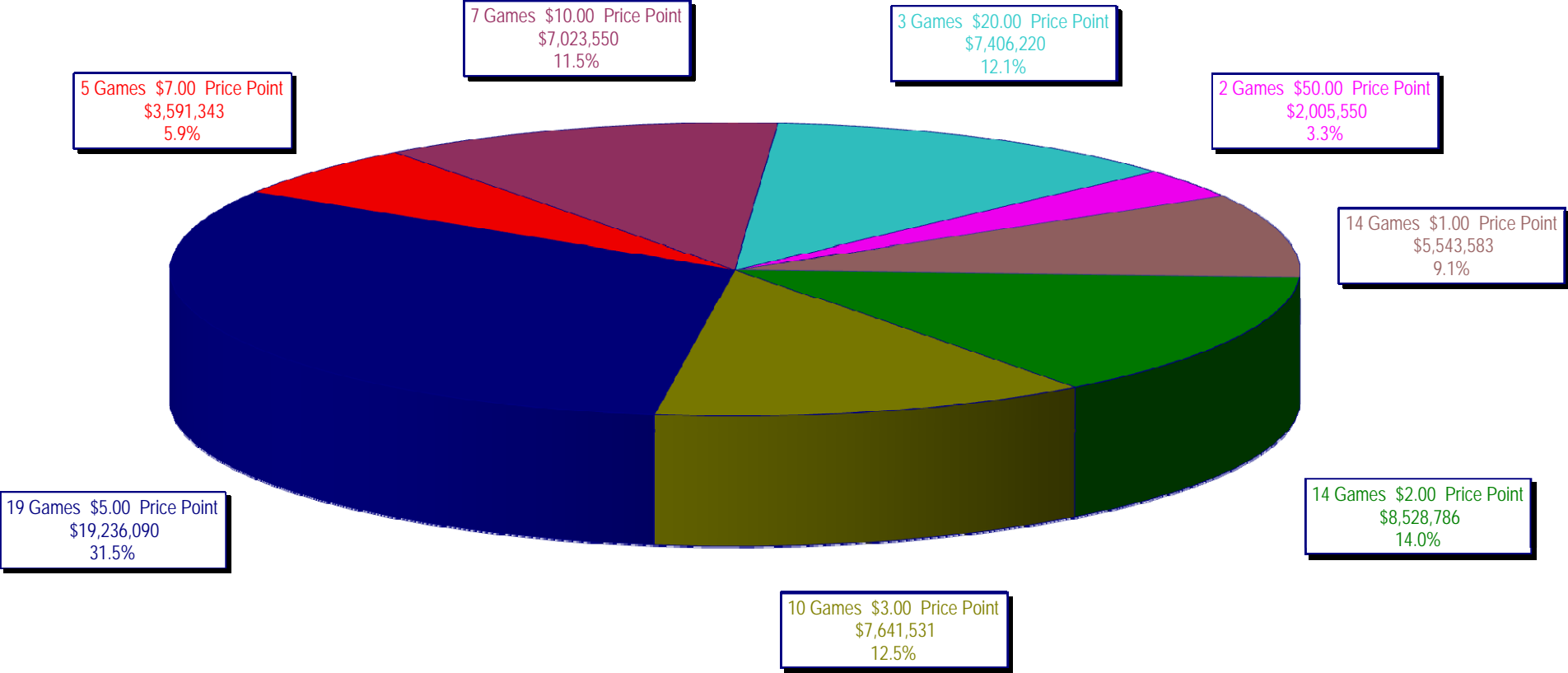
On-Line Sales

		FY Sales Through Week Ending 1/8/2011		FY Prize Expense Through Week Ending 1/8/2011	Actual* Prize Payout	Base Payout (Prize Pool)
Lotto	\$	60,596,205	\$	39,285,515	64.83%	50.00%
Pick 3		96,580,320		45,890,099	47.51%	50.00%
Pick 3 Sum It Up		1,960,897		898,939	45.84%	50.00%
Cash Five		22,877,024		11,439,294	50.00%	50.00%
Texas Two Step		17,223,518		8,750,611	50.81%	50.00%
Mega Millions		73,606,459		36,832,218	50.04%	50.00%**
Megaplier		14,191,162		7,666,333	54.02%	N/A
Daily 4		20,025,694		9,080,550	45.34%	50.00%
Daily 4 Sum It Up		1,576,860		713,228	45.23%	50.00%
Powerball		29,511,170		15,456,888	52.38%	50.00%
Power Play		7,154,781		4,398,715	61.48%	50.00%
Totals	\$	345,304,089	\$	180,412,389	52.25%	

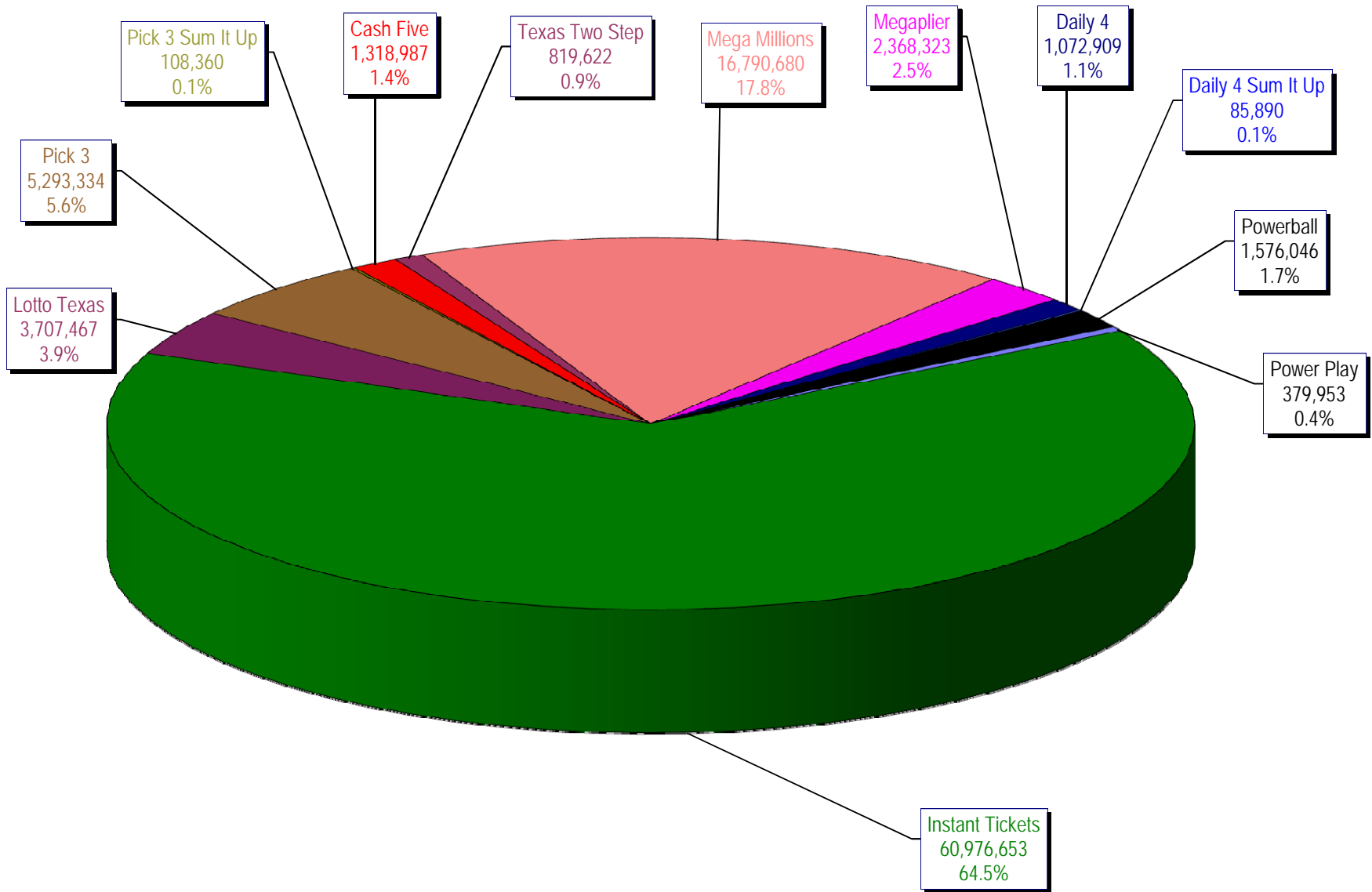
* Before Unclaimed Prizes

** Estimated; depends on # of guaranteed prizes won in Texas

Texas Lottery Commission
Instant Ticket Sales
For the Week Ending 01/08/2011
(Unaudited)



Texas Lottery Commission
All Game Sales
For the Week Ending 01/08/2011
(Unaudited)



Texas Lottery Commission - Weekly Sales Summary for FY 2011 (Unaudited)

Week Ended	Instant Games	New Games & Dates	Lotto Texas	Jackpot W S		Pick 3	Pick 3 Sum It Up	Cash Five	Texas Two Step	Jackpot M TH		Mega Millions	Jackpot T F		Megaplier	Daily 4	Daily 4 Sum It Up	Powerball	Jackpot W S		Power Play	Total	Per Cap.
9/4/2010	50,886,871	1251 (\$3,N); 1248 (\$5,N) - 08/30/10	3,238,939	4	5	5,133,180	99,799	1,255,137	907,736	275	375	2,216,782	12	16	525,380	1,081,186	85,150	1,543,448	34	47	376,802	67,350,410	2.72
9/11/2010	48,912,598	1147 (\$2,N) - 09/06/10 1346 (\$10,N) - 09/09/10	3,154,833	6	7	5,202,514	97,823	1,211,276	762,324	200	225	2,195,801	25	34	519,467	1,065,276	82,080	1,709,056	62	79	397,711	65,310,758	2.64
9/18/2010	48,988,241	1281 (\$1,N); 1246 (\$5,N) - 09/13/10	3,172,150	8	4	5,124,056	99,166	1,220,135	791,490	275	200	2,434,917	44	54	561,933	1,057,398	82,257	2,156,491	94	112	466,834	66,155,068	2.67
9/25/2010	48,471,310	1313 (\$2,N) - 09/20/10	3,103,083	5	6	4,971,566	95,270	1,212,530	772,370	225	200	2,067,112	12	16	496,860	1,036,994	79,412	1,430,615	20	25	358,001	64,095,123	2.59
10/2/2010	50,145,138	1234 (\$5,N) - 09/27/10	3,222,746	7	8	5,204,986	104,577	1,234,899	823,382	225	275	2,240,144	23	32	528,413	1,076,154	86,262	1,552,770	35	48	379,608	66,599,077	2.69
10/9/2010	50,918,591	0.00	3,280,138	9	10	5,314,323	117,023	1,225,735	1,029,730	375	500	2,412,454	41	51	555,007	1,071,718	84,446	1,512,464	60	20	371,925	67,893,554	2.74
10/16/2010	49,096,011	1284 (\$7,N); 1285 (\$20,N) - 10/11/10	3,296,700	11	12	5,063,257	106,357	1,194,375	925,090	650	200	2,715,784	61	72	594,908	1,018,024	78,845	1,326,299	25	34	342,265	65,757,915	2.65
10/23/2010	50,158,946	1286 (\$1,N); 1287 (\$5,N) - 10/18/10 1344 (\$1,N) - 10/20/10	3,335,547	13	14	5,032,655	106,948	1,199,133	825,573	225	275	3,316,557	86	101	682,142	1,012,732	78,498	1,428,095	46	59	356,580	67,533,406	2.73
10/30/2010	49,775,287	1243 (\$2,N) - 10/25/10 1345 (\$3,N) - 10/27/10	3,381,643	15	16	5,024,213	106,782	1,187,956	823,604	375	200	3,953,547	118	140	780,698	1,060,330	83,556	1,609,281	72	87	390,600	68,177,496	2.75
11/6/2010	53,337,848	1237 (\$1,N); 1290 (\$10,N) - 11/01/10	3,077,378	4	5	5,272,446	108,946	1,236,736	834,465	225	275	2,115,522	12	16	503,490	1,113,528	89,447	2,450,557	104	123	519,393	70,659,756	2.85
11/13/2010	52,285,479	1289 (\$3,N); 1291 (\$5,N) - 11/08/10	3,119,350	6	7	5,326,172	109,316	1,235,631	1,019,783	375	500	2,123,118	25	12	506,225	1,099,192	87,965	1,407,333	20	25	354,606	68,674,169	2.77
11/20/2010	52,424,036	1288 (\$2,N) - 11/15/10	3,162,292	8	9	5,124,861	104,372	1,234,396	795,125	200	225	2,132,040	16	25	513,725	1,064,835	84,612	1,543,690	35	50	378,075	68,562,058	2.77
11/27/2010	51,262,518	1280 (\$1,N); 1292 (\$5,N) - 11/22/10	3,149,608	10	11	4,923,209	98,827	1,167,907	823,798	275	375	2,138,067	34	42	504,292	1,022,779	81,580	1,659,305	64	79	397,704	67,229,593	2.71
12/4/2010	56,385,259	0	3,209,886	12	4	5,363,547	109,244	1,253,990	1,186,124	475	625	2,557,727	52	62	583,255	1,122,484	89,338	1,676,877	95	20	400,704	73,938,434	2.98
12/11/2010	56,540,048	1294 (\$1,N); 1282 (\$5,N) - 12/06/10	3,017,170	4	5	5,249,891	105,120	1,247,150	1,610,514	775	1,000	2,939,445	74	88	635,353	1,112,322	86,776	1,349,316	25	37	350,296	74,243,400	3.00
12/18/2010	57,699,991	1296 (\$3,N) - 12/13/10	3,109,357	6	7	5,252,987	103,488	1,245,192	1,210,115	1,200	200	3,933,829	104	123	784,466	1,102,301	86,146	1,297,373	20	25	340,030	76,165,273	3.07
12/25/2010	59,800,480	1299 (\$1,N); 1229 (\$5,N) - 12/20/10	3,068,654	8	9	5,231,226	107,702	1,204,856	868,156	225	275	5,351,969	145	168	985,293	1,104,373	87,086	1,295,059	35	46	331,397	79,436,251	3.21
1/1/2011	61,423,121	0	3,359,890	10	11	5,077,612	102,834	1,237,160	811,499	200	225	10,941,746	200	242	1,800,536	1,071,712	84,683	1,300,553	20	25	334,032	87,545,378	3.53
1/8/2011	60,976,653	1235 (\$2,N); 1244 (\$7,N) - 01/03/11	3,707,467	12	13	5,293,334	108,360	1,318,987	819,622	200	200	16,790,680	355	12	2,368,323	1,072,909	85,890	1,576,046	34	51	379,953	94,498,223	3.81
weekly change	-0.7%		10.3%			4.2%	5.4%	6.6%	1.0%			53.5%			31.5%	0.1%	1.4%	21.2%			13.7%	7.9%	
	SALES		SALES			SALES	SALES	SALES	SALES			SALES			SALES	SALES	SALES	SALES			SALES	SALES	% of Sales
Startup to date	40,023,352,110		10,796,103,000			3,949,715,913	19,719,833	2,279,061,510	544,075,019			1,382,499,301			317,096,349	162,383,979	20,114,709	84,848,618			20,289,497	59,807,393,810	100.0%
Calendar Year to date	68,455,443		4,656,474			6,084,228	123,957	1,486,188	842,303			17,276,413			2,442,579	1,236,638	98,903	1,907,126			473,227	105,083,479	100.0%
Fiscal Year to date 2011	990,260,588		60,596,205			96,580,320	1,960,897	22,877,024	17,223,518			73,606,459			14,191,162	20,025,694	1,576,860	29,511,170			7,154,781	1,335,564,677	100.0%