



*WEEKLY SALES SUMMARY*

Unaudited

**Week Ending: 01/09/2010**

Texas Lottery Commission  
Fiscal Year to Date Sales Comparison  
Unaudited

Through the week ending 01/09/2010 (19 weeks)

Sales by Game	FY 2008 *	FY 2009 **	FY 2010	\$ Change		% Change	
				FY 2010 to FY 2008	FY 2010 to FY 2009 to	FY 2010 to FY 2008	FY 2010 to FY 2009
Instants	\$ 1,021,658,425	\$ 980,700,646	\$ 986,906,594	\$ -34,751,831	\$ 6,205,948	-3.4%	0.6%
Lotto Texas	77,755,353	65,653,172	98,234,970	20,479,617	32,581,798	26.3%	49.6%
Pick 3	102,845,764	100,726,618	95,828,068	-7,017,696	-4,898,550	-6.8%	-4.9%
Pick 3 Sum It Up	1,718,982	2,132,526	1,910,059	191,077	-222,468	-	-10.4%
Cash 5	28,358,434	25,628,278	24,173,591	-4,184,843	-1,454,687	-14.8%	-5.7%
Texas Two Step	15,141,404	16,577,266	16,387,454	1,246,050	-189,812	8.2%	-1.1%
Mega Millions	53,211,357	62,054,615	68,691,007	15,479,650	6,636,393	29.1%	10.7%
Megaplier	13,251,634	14,712,323	15,398,510	2,146,876	686,187	16.2%	4.7%
Daily 4	14,865,500	15,287,673	18,569,389	3,703,889	3,281,716	-	21.5%
Daily 4 Sum It Up	3,872,311	1,957,363	1,788,409	-2,083,902	-168,954	-	-8.6%
<b>Total</b>	<b>\$ 1,332,679,163</b>	<b>\$ 1,285,430,479</b>	<b>\$ 1,327,888,050</b>	<b>\$ -4,791,113</b>	<b>\$ 42,457,572</b>	<b>-0.4%</b>	<b>3.3%</b>

\* 3 extra days      \*\* 1 extra day

Texas Lottery Commission  
 Fiscal Year to Date Cumulative Average Sales Comparison  
 Unaudited

Through the week ending 01/09/2010 (19 weeks)

Sales by Game	FY 2008	FY 2009	FY 2010
Instants	\$ 7,624,317	\$ 7,429,550	\$ 7,533,638
Lotto Texas	580,264	497,373	749,885
Pick 3	767,506	763,080	731,512
Pick 3 Sum It Up	12,828	16,156	14,581
Cash 5	211,630	194,154	184,531
Texas Two Step	112,996	125,585	125,095
Mega Millions	397,100	470,111	524,359
Megaplier	98,893	111,457	117,546
Daily 4	110,937	115,816	141,751
Daily 4 Sum It Up	28,898	14,829	13,652
<b>Total</b>	<b>\$ <u>9,945,367</u></b>	<b>\$ <u>9,738,110</u></b>	<b>\$ <u>10,136,550</u></b>
	thru 01/12/2008 134 days	thru 01/10/2009 132 days	thru 01/09/2010 131 days

Texas Lottery Commission  
Fiscal Year Over Year Change in Sales  
Unaudited  
FY 2010 Compared to FY 2009

Week	FY 2010 Week Ending	INSTANT TICKETS				ON-LINE GAMES				TOTAL SALES			
		FY 2010	FY 2009	Difference	% change - Cumulative Sales	FY 2010	FY 2009	Difference	% change - Cumulative Sales	FY 2010	FY 2009	Difference	% change - Cumulative Sales
1	9/5/2009**	\$40,148,241	\$44,890,104	(\$4,741,863)	-10.6%	\$15,859,194	\$14,722,011	\$1,137,184	7.7%	\$56,007,435	\$59,612,115	(\$3,604,680)	-6.0%
2	9/12/2009	\$49,896,100	\$46,309,551	\$3,586,549	7.7%	\$18,206,315	\$13,704,860	\$4,501,455	32.8%	\$68,102,415	\$60,014,411	\$8,088,004	13.5%
3	9/19/2009	\$50,971,937	\$42,923,171	\$8,048,766	18.8%	\$18,859,622	\$12,291,263	\$6,568,359	53.4%	\$69,831,559	\$55,214,434	\$14,617,125	26.5%
4	9/26/2009	\$49,975,243	\$47,042,801	\$2,932,442	6.2%	\$19,345,435	\$14,222,339	\$5,123,096	36.0%	\$69,320,678	\$61,265,140	\$8,055,538	13.1%
5	10/3/2009	\$52,283,569	\$50,747,162	\$1,536,407	3.0%	\$20,991,695	\$15,784,472	\$5,207,223	33.0%	\$73,275,264	\$66,531,634	\$6,743,630	10.1%
6	10/10/2009	\$52,238,261	\$49,763,789	\$2,474,472	5.0%	\$21,547,439	\$15,622,498	\$5,924,941	37.9%	\$73,785,700	\$65,386,287	\$8,399,413	12.8%
7	10/17/2009	\$50,806,599	\$49,299,053	\$1,507,546	3.1%	\$23,114,594	\$15,167,940	\$7,946,654	52.4%	\$73,921,193	\$64,466,993	\$9,454,200	14.7%
8	10/24/2009	\$50,731,592	\$49,977,581	\$754,011	1.5%	\$17,274,411	\$14,525,843	\$2,748,568	18.9%	\$68,006,003	\$64,503,424	\$3,502,579	5.4%
9	10/31/2009	\$50,684,853	\$50,346,542	\$338,311	0.7%	\$15,710,720	\$14,838,845	\$871,876	5.9%	\$66,395,573	\$65,185,387	\$1,210,187	1.9%
10	11/7/2009	\$54,633,928	\$54,860,087	(\$226,159)	-0.4%	\$16,961,611	\$16,057,069	\$904,542	5.6%	\$71,595,539	\$70,917,156	\$678,383	1.0%
11	11/14/2009	\$52,109,218	\$53,484,812	(\$1,375,594)	-2.6%	\$16,407,349	\$15,829,819	\$577,530	3.6%	\$68,516,567	\$69,314,631	(\$798,064)	-1.2%
12	11/21/2009	\$52,427,881	\$52,806,511	(\$378,630)	-0.7%	\$15,829,561	\$16,460,748	(\$631,187)	-3.8%	\$68,257,442	\$69,267,259	(\$1,009,817)	-1.5%
13	11/28/2009	\$50,519,477	\$52,199,741	(\$1,680,264)	-3.2%	\$15,710,447	\$17,397,576	(\$1,687,129)	-9.7%	\$66,229,924	\$69,597,317	(\$3,367,393)	-4.8%
14	12/5/2009	\$54,376,448	\$56,731,851	(\$2,355,403)	-4.2%	\$16,905,341	\$20,363,789	(\$3,458,449)	-17.0%	\$71,281,789	\$77,095,640	(\$5,813,852)	-7.5%
15	12/12/2009	\$52,654,632	\$54,109,617	(\$1,454,985)	-2.7%	\$17,726,695	\$22,952,228	(\$5,225,533)	-22.8%	\$70,381,327	\$77,061,845	(\$6,680,518)	-8.7%
16	12/19/2009	\$54,542,793	\$55,777,328	(\$1,234,535)	-2.2%	\$19,379,751	\$15,833,517	\$3,546,234	22.4%	\$73,922,544	\$71,610,845	\$2,311,699	3.2%
17	12/26/2009	\$56,482,042	\$57,597,885	(\$1,115,843)	-1.9%	\$17,582,779	\$15,851,771	\$1,731,009	10.9%	\$74,064,821	\$73,449,656	\$615,166	0.8%
18	1/2/2010	\$57,952,304	\$57,582,115	\$370,189	0.6%	\$16,542,885	\$16,900,028	(\$357,143)	-2.1%	\$74,495,189	\$74,482,143	\$13,047	0.0%
19	1/9/2010	\$53,471,476	\$54,250,945	(\$779,469)	-1.4%	\$17,025,616	\$16,203,220	\$822,396	5.1%	\$70,497,092	\$70,454,165	\$42,927	0.1%
20	1/16/2010		\$51,625,339				\$15,701,605				\$67,326,944		
21	1/23/2010		\$52,789,573				\$15,897,473				\$68,687,046		
22	1/30/2010		\$55,453,471				\$16,908,272				\$72,361,743		
23	2/6/2010		\$62,247,711				\$18,354,314				\$80,602,025		
24	2/13/2010		\$60,509,056				\$19,218,078				\$79,727,134		
25	2/20/2010		\$59,194,623				\$21,098,199				\$80,292,822		
26	2/27/2010		\$58,857,216				\$24,116,924				\$82,974,140		
27	3/6/2010		\$59,552,257				\$23,995,136				\$83,547,393		
28	3/13/2010		\$53,754,084				\$18,769,831				\$72,523,915		
29	3/20/2010		\$52,581,107				\$15,903,038				\$68,484,145		
30	3/27/2010		\$52,560,961				\$16,094,933				\$68,655,894		
31	4/3/2010		\$56,249,759				\$17,357,002				\$73,606,761		
32	4/10/2010		\$54,440,987				\$17,660,600				\$72,101,587		
33	4/17/2010		\$52,755,834				\$18,469,585				\$71,225,419		
34	4/24/2010		\$51,450,968				\$20,216,898				\$71,667,866		
35	5/1/2010		\$52,327,090				\$23,520,573				\$75,847,663		
36	5/8/2010		\$53,214,412				\$16,241,207				\$69,455,619		
37	5/15/2010		\$50,785,227				\$15,990,544				\$66,775,771		
38	5/22/2010		\$56,567,077				\$15,874,447				\$72,441,524		
39	5/29/2010		\$55,359,239				\$16,040,196				\$71,399,435		
40	6/5/2010		\$60,250,125				\$16,301,599				\$76,551,724		
41	6/12/2010		\$54,979,517				\$16,143,215				\$71,122,732		
42	6/19/2010		\$53,109,433				\$16,357,924				\$69,467,357		

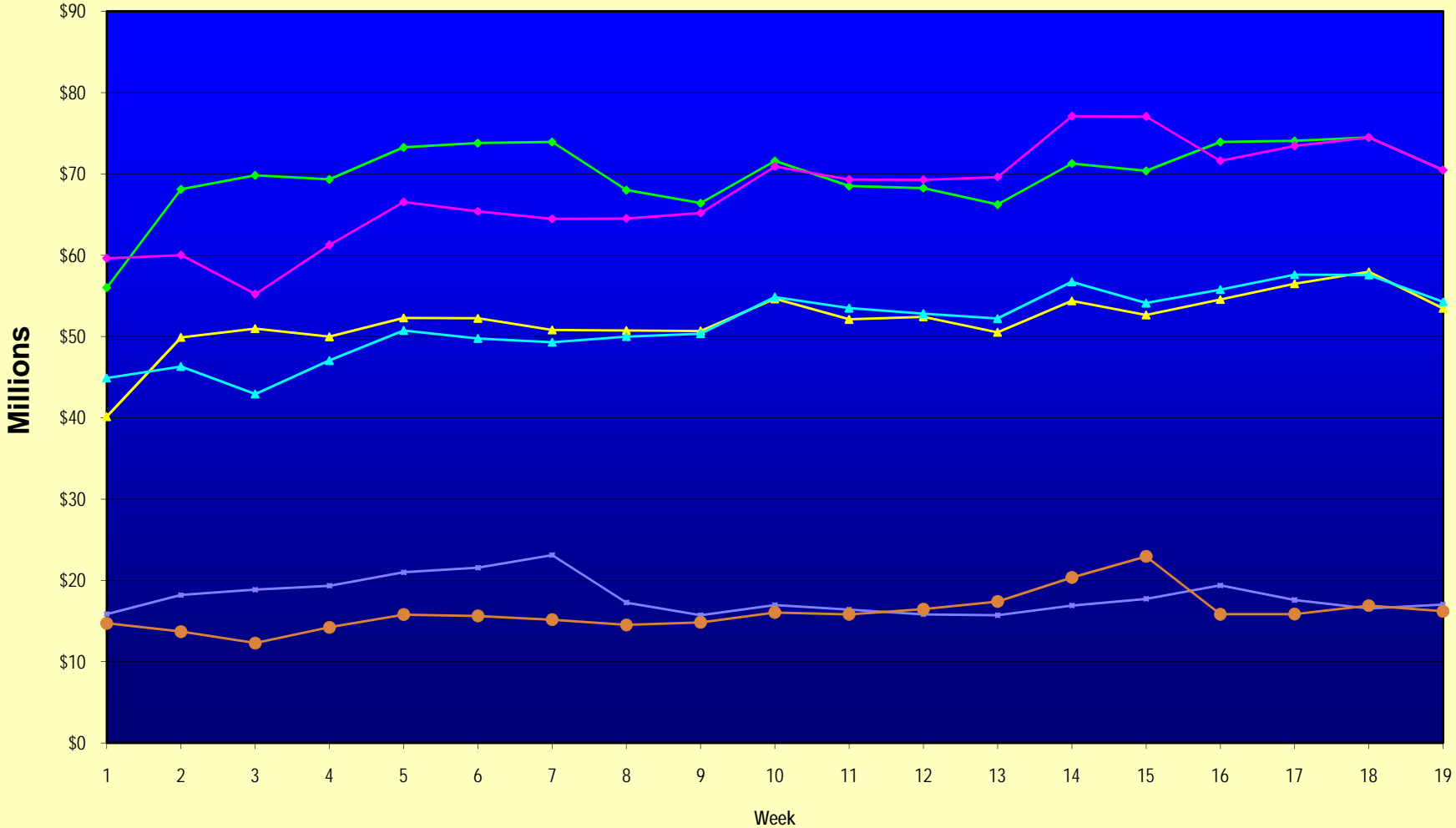
Note: Week 1 is not a full week of sales as this report is prepared on a Fiscal Year basis.

Texas Lottery Commission  
Fiscal Year Over Year Change in Sales  
Unaudited  
FY 2010 Compared to FY 2009

Week	FY 2010 Week Ending	INSTANT TICKETS				ON-LINE GAMES				TOTAL SALES			
		FY 2010	FY 2009	Difference	% change - Cumulative Sales	FY 2010	FY 2009	Difference	% change - Cumulative Sales	FY 2010	FY 2009	Difference	% change - Cumulative Sales
43	6/26/2010		\$53,431,083				\$16,786,203				\$70,217,286		
44	7/3/2010		\$55,518,615				\$18,292,421				\$73,811,036		
45	7/10/2010		\$53,004,390				\$17,842,530				\$70,846,920		
46	7/17/2010		\$52,498,940				\$16,138,341				\$68,637,281		
47	7/24/2010		\$51,550,731				\$16,748,137				\$68,298,868		
48	7/31/2010		\$51,893,977				\$18,065,180				\$69,959,157		
49	8/7/2010		\$54,506,395				\$19,258,117				\$73,764,512		
50	8/14/2010		\$51,766,530				\$20,828,293				\$72,594,823		
51	8/21/2010		\$51,909,040				\$24,913,396				\$76,822,436		
52	8/28/2010		\$50,848,517				\$35,661,563				\$86,510,080		
53			\$13,288,367				\$3,085,816				\$16,374,183		
Total thru Current Week		\$986,906,594	\$980,700,646	\$6,205,948	0.6%	\$340,981,456	\$304,729,833	\$36,251,624	11.9%	\$1,327,888,050	\$1,285,430,479	\$42,457,572	3.3%
Fiscal Year Total		\$986,906,594	\$2,791,532,297			\$340,981,456	\$928,581,414			\$1,327,888,050	\$3,720,113,711		

\*\* FY 2010 includes 5 days; FY 2009 includes 6 days

### Texas Lottery Commission Fiscal Year Over Year Change in Sales



◆ Total Sales 2010    
 ◆ Total Sales 2009    
 ▲ Instant Tickets 2010    
 ▲ Instant Tickets 2009    
 ◆ On-Line Games 2010    
 ● On-Line Games 2009

Note: Week 1 is not a full week of sales as this report is prepared on a Fiscal Year basis.

Texas Lottery Commission  
**Instant Tickets by Price Point**  
Sales, Prize Expense, Sales Contribution and Payout Percentage With Year Over Year Changes  
Unaudited

Fiscal Year	Price Point	# of Active Games	FY Sales	% of Instant Ticket Sales	Year over Year Change in Sales	FY Prize Expense	Year over Year Change in Prize Expense	FY Sales Contribution	Year over Year Change in Contribution	Average Prize Payout %	Year over Year Change in Payout %
2009	\$1.00	34	86,260,520	8.8%		51,917,881		34,342,639		60.2%	0.1%
thru	\$2.00	31	167,421,026	17.1%		108,560,736		58,860,290		64.8%	-0.7%
1/10/2009	\$3.00	13	105,817,620	10.8%		69,562,718		36,254,902		65.7%	0.0%
	\$5.00	33	300,722,429	30.7%		204,528,121		96,194,308		68.0%	0.1%
	\$7.00	6	42,882,861	4.4%		29,166,417		13,716,444		68.0%	0.0%
	\$10.00	14	133,772,370	13.6%		93,623,487		40,148,883		70.0%	0.0%
	\$20.00	7	92,575,360	9.4%		66,443,077		26,132,283		71.8%	0.0%
	\$25.00	1	2,375,100	0.2%		1,727,523		647,577		72.7%	0.2%
	\$30.00	3	8,699,610	0.9%		6,303,873		2,395,737		72.5%	0.1%
	\$50.00	3	40,173,750	4.1%		29,043,103		11,130,647		72.3%	0.2%
<b>Total</b>		<b>145</b>	<b>\$980,700,646</b>			<b>\$660,876,937</b>		<b>\$319,823,709</b>		<b>67.4%</b>	<b>-0.4%</b>
2010	\$1.00	29	83,167,026	8.4%		49,987,007		33,180,019		60.1%	0.0%
thru	\$2.00	31	141,595,028	14.3%		93,465,826		48,129,202		66.0%	1.3%
1/9/2010	\$3.00	15	123,208,446	12.5%		81,007,245		42,201,201		65.7%	0.2%
	\$5.00	34	283,392,653	28.7%		192,518,821		90,873,832		67.9%	-0.1%
	\$7.00	5	40,129,481	4.1%		27,287,228		12,842,253		68.0%	0.0%
	\$10.00	13	142,736,480	14.5%		99,845,404		42,891,076		70.0%	0.0%
	\$20.00	5	146,805,280	14.9%		109,583,866		37,221,415		74.6%	2.1%
	\$25.00	0	-	0.0%		-		-		0.0%	-100.0%
	\$30.00	0	-	0.0%		-		-		0.0%	-100.0%
	\$50.00	2	25,872,200	2.6%		20,041,674		5,830,526		77.5%	3.9%
<b>Total</b>		<b>134</b>	<b>\$986,906,594</b>			<b>\$673,737,070</b>		<b>\$313,169,524</b>		<b>68.3%</b>	<b>0.8%</b>
Variance	\$1.00	-5	-3,093,494		-3.6%	-1,930,874	-3.7%	-1,162,620	-3.4%	-0.08%	
2010 to	\$2.00	0	-25,825,998		-15.4%	-15,094,910	-13.9%	-10,731,088	-18.2%	1.17%	
2009	\$3.00	2	17,390,826		16.4%	11,444,527	16.5%	5,946,299	16.4%	0.01%	
	\$5.00	1	-17,329,776		-5.8%	-12,009,299	-5.9%	-5,320,477	-5.5%	-0.08%	
	\$7.00	-1	-2,753,380		-6.4%	-1,879,189	-6.4%	-874,191	-6.4%	-0.02%	
	\$10.00	-1	8,964,110		6.7%	6,221,917	6.6%	2,742,193	6.8%	-0.04%	
	\$20.00	-2	54,229,920		58.6%	43,140,788	64.9%	11,089,132	42.4%	2.87%	
	\$25.00	-1	-2,375,100		-100.0%	-1,727,523	-100.0%	-647,577	-100.0%	-72.73%	
	\$30.00	-3	-8,699,610		-100.0%	-6,303,873	-100.0%	-2,395,737	-100.0%	-72.46%	
	\$50.00	-1	-14,301,550		-35.6%	-9,001,429	-31.0%	-5,300,121	-47.6%	5.17%	
<b>Total</b>		<b>-11</b>	<b>\$6,205,948</b>		<b>0.6%</b>	<b>\$12,860,133</b>	<b>1.9%</b>	<b>-\$6,654,185</b>	<b>-2.1%</b>	<b>0.88%</b>	

Texas Lottery Commission  
**Instant Tickets by Price Point**  
**Sales, Prize Expense, Sales Contribution and Payout Percentage With Year Over Year Changes**  
 Unaudited

Notes - Instant Ticket Variances

		FY 2010		FY 2009		Difference
Sales	\$1 - \$7		\$671,492,634		\$703,104,456	-\$31,611,822
Prize Exp.	\$1 - \$7		\$444,266,126		\$463,735,873	-\$19,469,747
Sales Cont.	\$1 - \$7		\$227,226,508		\$239,368,583	-\$12,142,075
Prize Exp. %	\$1 - \$7		66.2%		66.0%	0.2%
		FY 2010		FY 2009		Difference
Sales	\$10 - \$50		\$315,413,960		\$277,596,190	\$37,817,770
Prize Exp.	\$10 - \$50		\$229,470,944		\$197,141,064	\$32,329,880
Sales Cont.	\$10 - \$50		\$85,943,016		\$80,455,126	\$5,487,890
Prize Exp. %	\$10 - \$50		72.8%		71.0%	1.7%
		FY 2010		FY 2009		Difference
Sales	Instant		\$986,906,594		\$980,700,646	\$6,205,948
Prize Exp.	Instant		\$673,737,070		\$660,876,937	\$12,860,133
Sales Cont.	Instant		\$313,169,524		\$319,823,709	-\$6,654,185
Prize Exp. %	Instant		68.3%		67.4%	0.9%

		FY 2010		FY 2009		Difference
Sales	\$1 - \$10		\$814,229,114		\$836,876,826	-\$22,647,712
Prize Exp.	\$1 - \$10		\$544,111,530		\$557,359,360	-\$13,247,830
Sales Cont.	\$1 - \$10		\$270,117,584		\$279,517,466	-\$9,399,882
Prize Exp. %	\$1 - \$10		66.8%		66.6%	0.2%
		FY 2010		FY 2009		Difference
Sales	\$20 - \$50		\$172,677,480		\$143,823,820	\$28,853,660
Prize Exp.	\$20 - \$50		\$129,625,540		\$103,517,577	\$26,107,963
Sales Cont.	\$20 - \$50		\$43,051,940		\$40,306,243	\$2,745,697
Prize Exp. %	\$20 - \$50		75.1%		72.0%	3.1%
		FY 2010		FY 2009		Difference
Sales	Instant		\$986,906,594		\$980,700,646	\$6,205,948
Prize Exp.	Instant		\$673,737,070		\$660,876,937	\$12,860,133
Sales Cont.	Instant		\$313,169,524		\$319,823,709	-\$6,654,185
Prize Exp. %	Instant		68.3%		67.4%	0.9%

Texas Lottery Commission  
 Weekly Sales Summary  
 & Comparison to Previous Week  
 Unaudited

	Week Ending 01/09/2010		Week Ending 01/02/2010			
	<u>THIS WEEK</u>	% of Sales	<u>LAST WEEK</u>	% of Sales	<u>\$ change</u>	<u>% change</u>
Total Sales	<u>\$70,497,092</u>		<u>\$74,495,189</u>		<u>-\$3,998,098</u>	-5.37%
Instant Tickets	<u>\$53,471,476</u>	75.8%	<u>\$57,952,304</u>	77.8%	<u>-\$4,480,828</u>	-7.73%
Lotto Texas	\$4,579,485	6.5%	\$4,605,833	6.2%	-\$26,348	-0.57%
Pick 3	\$5,094,846	7.2%	\$5,021,567	6.7%	\$73,280	1.46%
Pick 3 Sum It Up	\$97,216	0.1%	\$97,501	0.1%	-\$285	-0.29%
Cash 5	\$1,297,994	1.8%	\$1,319,224	1.8%	-\$21,230	-1.61%
Texas Two Step	\$1,024,853	1.5%	\$889,422	1.2%	\$135,431	15.23%
Mega Millions	\$3,114,965	4.4%	\$2,825,733	3.8%	\$289,232	10.24%
Megaplier	\$735,440	1.0%	\$676,790	0.9%	\$58,650	8.67%
Daily 4	\$989,636	1.4%	\$1,012,922	1.4%	-\$23,286	-2.30%
Daily 4 Sum It Up	\$91,181	0.1%	\$93,894	0.1%	-\$2,714	-2.89%
Total Online Sales	<u>\$17,025,616</u>		<u>\$16,542,885</u>		<u>\$482,731</u>	2.92%

\* Totals may not sum due to rounding.

Texas Lottery Commission  
Weekly Sales Summary  
Unaudited

INSTANT TICKETS  
TOP TEN SELLING GAMES

For the Week Ending : 01/09/2010

Rank	Price Point	Game	Sales (Millions)
1	\$ 20	\$500,000,000 BLOCKBUSTER	\$ 4.755
2	\$ 10	GOLD BAR BONANZA	\$ 3.251
3	\$ 5	CASINO ROYALE	\$ 3.076
4	\$ 10	JINGLE JUMBO BUCKS	\$ 2.011
5	\$ 5	FIVE STAR CASH	\$ 1.735
6	\$ 10	SET FOR LIFE	\$ 1.681
7	\$ 3	BONUS CASHWORD	\$ 1.623
8	\$ 2	BREAK THE BANK	\$ 1.560
9	\$ 3	TRIPLER	\$ 1.491
10	\$ 3	BONUS WORD CASHWORD	\$ 1.484

Texas Lottery Commission  
Prize Payout Tracking Report  
Unaudited

Through Week Ending 01/09/2010

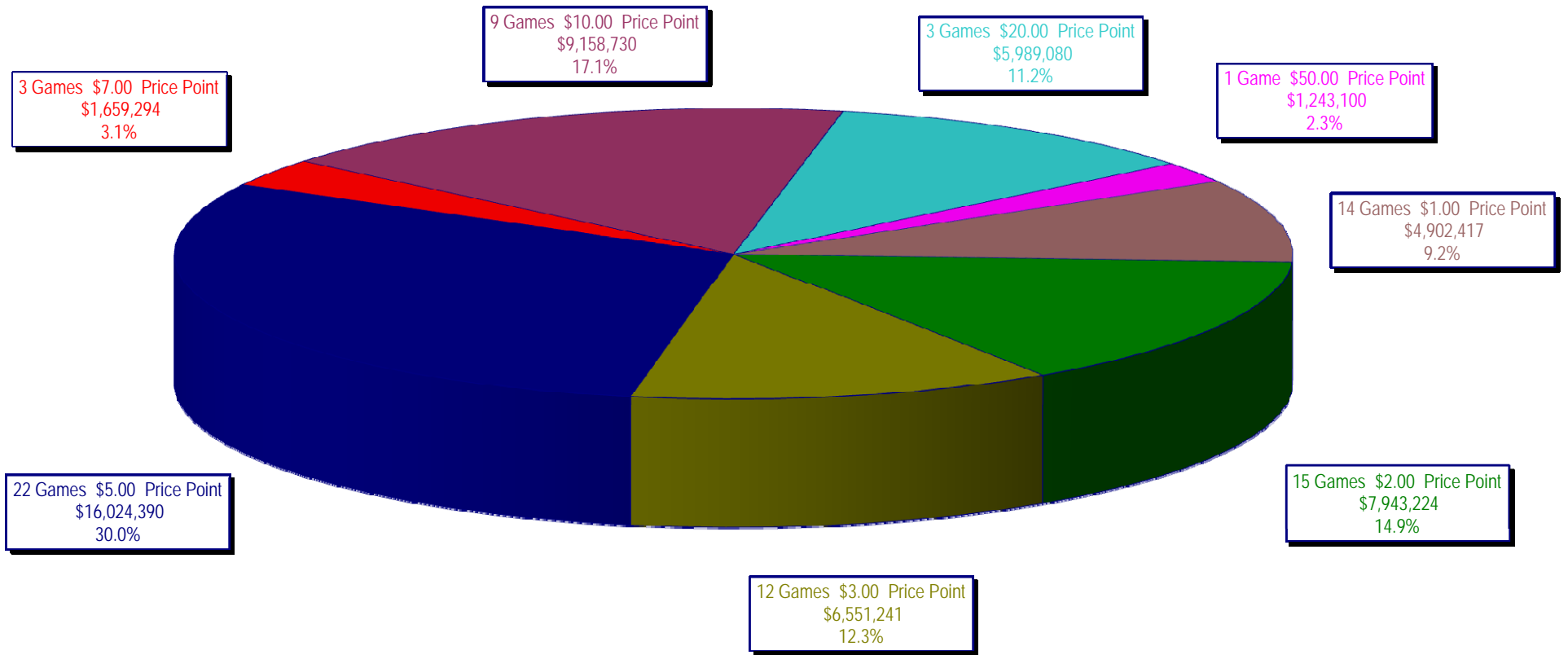
On-Line Sales

		FY Sales Through Week Ending 1/9/2010		FY Prize Expense Through Week Ending 1/9/2010	Actual* Prize Payout	Base Payout (Prize Pool)
Lotto	\$	98,234,970	\$	49,144,743	50.03%	50.00%
Pick 3		95,828,068		45,159,640	47.13%	50.00%
Pick 3 Sum It Up		1,910,059		854,301	44.73%	50.00%
Cash 5		24,173,591		13,051,744	53.99%	50.00%
Texas Two-Step		16,387,454		8,529,451	52.05%	50.00%
Mega Millions		68,691,007		34,509,337	50.24%	50.00%**
Megaplier		15,398,510		4,580,673	29.75%	N/A
Daily 4		18,569,389		8,792,750	47.35%	50.00%
Daily 4-Sum It Up		1,788,409		770,719	43.10%	50.00%
<b>Totals</b>	\$	<b>340,981,456</b>	\$	<b>165,393,358</b>	<b>48.51%</b>	

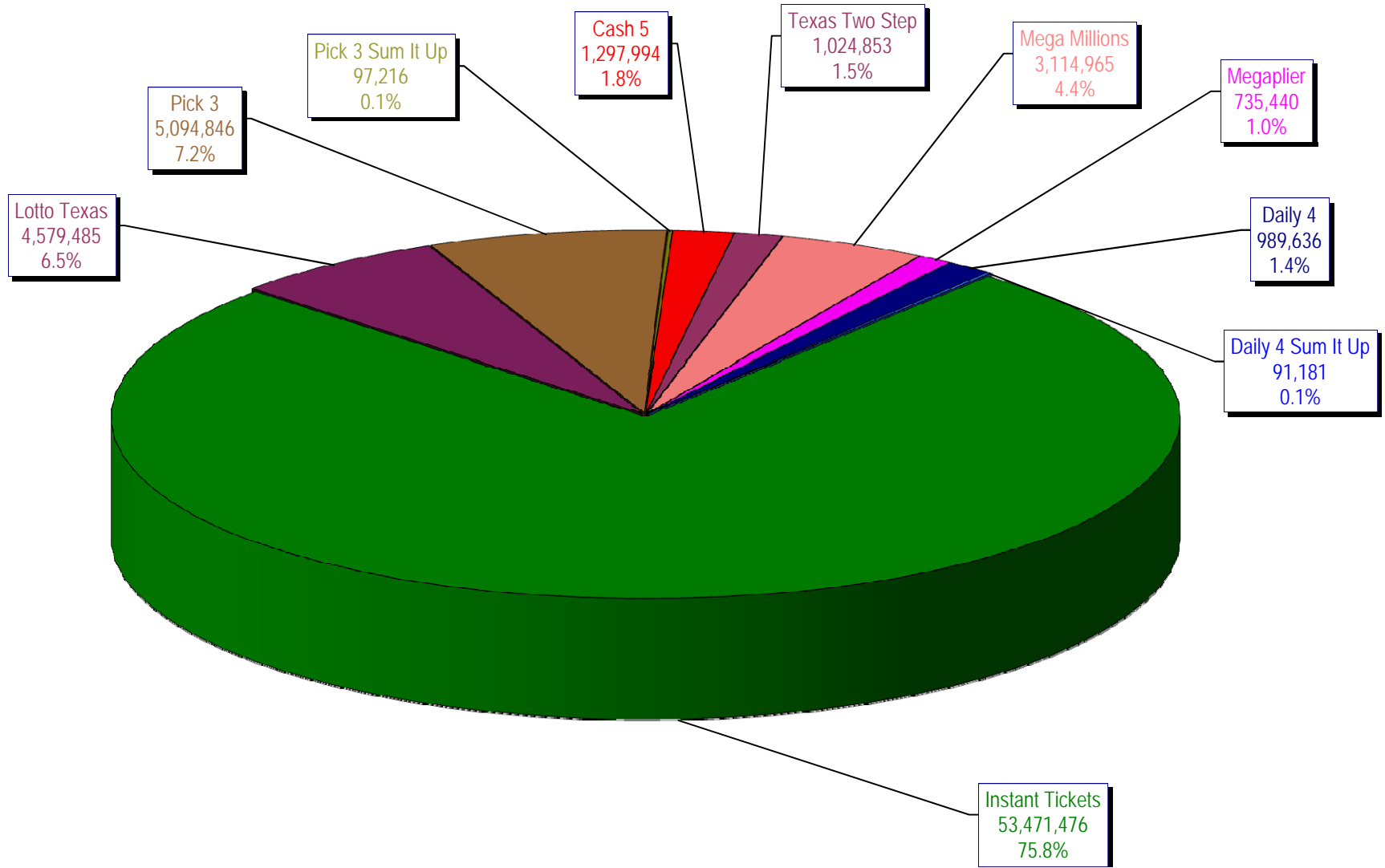
\* Before Unclaimed Prizes

\*\* Estimated; depends on # of guaranteed prizes won in Texas

Texas Lottery Commission  
Instant Ticket Sales  
For the Week Ending 01/09/2010  
(Unaudited)



Texas Lottery Commission  
**All Game Sales**  
For the Week Ending 01/09/2010  
(Unaudited)



Texas Lottery Commission - Weekly Sales Summary for FY 2010 (Unaudited)

Week Ended	Instant Games	New Games & Dates	Lotto Texas	Jackpot W	S	Pick 3	Pick 3 Sum It Up	Cash 5	Texas Two Step	Jackpot M	TH	Mega Millions	Jackpot T	F	Megaplier	Daily 4	Daily 4 Sum It Up	Total	Per Cap.
9/5/2009	53,436,608.00	1183 (\$2, N) - 08/31/09	6,294,287.00	45	47	5,276,229.00	104,886.00	1,338,093.00	1,212,330.00	1.2	200	2,959,401.00	12	12	708,622.00	955,411.00	95,751.00	72,381,618.00	2.98
9/12/2009	49,896,100.00	1200 (\$1, N); 1201 (\$10, N) - 09/07/09	6,426,945.00	49	51	5,109,927.50	104,641.00	1,278,982.00	771,782.00	225	200	2,811,431.00	18	28	693,407.00	918,268.00	90,931.50	68,102,415.00	2.80
9/19/2009	50,971,937.00	1202 (\$3, N); 1185 (\$5, N) - 09/14/09	6,496,645.00	53	55	5,176,010.00	103,700.00	1,295,302.00	803,124.00	200	225	3,164,844.00	38	51	760,088.00	965,671.50	94,237.00	69,831,558.50	2.87
9/26/2009	49,975,243.00	1141 (\$1, N); 1259 (\$3, N) - 09/21/09	6,765,369.00	57	59	4,894,237.50	98,171.00	1,271,129.00	915,249.00	275	400	3,568,088.00	62	75	822,408.00	918,596.00	92,187.50	69,320,678.00	2.85
10/3/2009	52,283,569.00	1203 (\$2, N); 1172 (\$5, N) - 09/28/09	7,003,107.00	61	63	5,156,873.00	102,841.50	1,315,863.00	1,111,913.00	525	650	4,270,019.00	88	105	939,935.00	993,158.50	97,984.50	73,275,263.50	3.01
10/10/2009	52,238,261.00	1205 (\$1, N); 1263 (\$3, N) - 10/05/09	7,061,948.00	64	67	5,050,571.00	102,586.50	1,300,852.00	811,464.00	200	225	5,100,350.00	122	145	1,050,507.00	971,147.50	98,012.50	73,785,699.50	3.03
10/17/2009	50,806,599.00	1187 (\$2, N); 1193 (\$20, N) - 10/12/09	7,262,683.00	70	73	4,990,457.00	99,389.50	1,276,305.00	769,253.00	200	200	6,449,660.00	170	200	1,245,391.00	931,084.00	90,371.00	73,921,192.50	3.04
10/24/2009	50,731,592.00	1188 (\$3, N); 1189 (\$5, N) - 10/19/09	5,785,292.00	76	4	4,845,815.00	93,256.00	1,282,033.00	806,971.00	225	275	2,776,628.00	12	18	663,491.00	931,641.00	89,284.00	68,006,003.00	2.80
10/31/2009	50,684,853.00	1192 (\$10, N); 1186 (\$1, N) - 10/26/09	3,749,006.00	5	6	4,944,409.00	98,542.50	1,289,523.00	815,750.00	375	200	2,988,991.00	28	40	717,574.00	1,006,435.00	100,489.50	66,395,573.00	2.73
11/7/2009	54,633,928.00	1191 (\$7, N) - 11/02/09	3,982,319.00	7	8	5,265,020.50	105,180.50	1,339,215.00	853,140.00	225	275	3,458,403.00	50	63	795,045.00	1,058,564.00	104,724.00	71,595,539.00	2.94
11/14/2009	52,109,218.00	1218 (\$2, N); 1184 (\$5, N) - 11/09/09	3,985,493.00	9	10	5,172,602.50	104,782.00	1,274,573.00	829,607.00	375	200	3,210,618.00	77	12	752,365.00	983,342.50	93,966.00	68,516,567.00	2.82
11/21/2009	52,427,881.00	0	3,943,958.00	11	12	5,123,802.00	104,705.00	1,255,026.00	797,796.00	225	275	2,834,318.00	17	27	687,221.00	990,042.00	92,693.00	68,257,442.00	2.81
11/28/2009	50,519,477.00	1206 (\$1, N); 1190 (\$5, N); 1264 (\$1, N) - 11/23/09	3,966,034.00	13	14	5,043,210.00	102,783.50	1,202,798.00	693,774.00	200	225	2,932,809.00	37	47	691,194.00	985,336.50	92,508.00	66,229,924.00	2.72
12/5/2009	54,376,448.00	0	4,004,632.00	15	16	5,393,458.00	111,441.50	1,288,282.00	873,210.00	250	350	3,297,486.00	57	69	773,136.00	1,063,424.00	100,271.00	71,281,788.50	2.93
12/12/2009	52,654,632.00	1159 (\$2, N); 1182 (\$5, N) - 12/07/09 1196 (\$5, N) - 12/09/09	4,105,013.00	17	18	5,091,389.00	102,613.50	1,294,933.00	1,075,732.00	475	600	4,054,401.00	83	100	874,842.00	1,030,471.50	97,299.50	70,381,326.50	2.89
12/19/2009	54,542,793.00	1207 (\$1, N); 1208 (\$3, N) - 12/14/09	4,355,440.00	20	21	5,115,559.00	100,562.50	1,293,347.00	1,288,820.00	750	925	5,052,350.00	118	140	1,028,695.00	1,046,577.50	98,399.50	73,922,543.50	3.04
12/26/2009	56,482,042.00	1209 (\$2, N); 1168 (\$5, N) - 12/21/09	4,400,669.00	22	24	4,950,247.50	92,929.50	1,243,523.00	767,273.00	200	200	4,188,741.00	162	12	866,559.00	982,220.50	90,616.50	74,064,821.00	3.04
1/2/2010	57,952,304.00	0	4,605,833.00	26	27	5,021,566.50	97,500.50	1,319,224.00	889,422.00	225	275	2,825,733.00	16	27	676,790.00	1,012,922.00	93,894.00	74,495,189.00	3.06
1/9/2010	53,471,476.00	1210 (1, N); 1211 (\$10, N) - 01/04/10	4,579,485.00	29	31	5,094,846.00	97,216.00	1,297,994.00	1,024,853.00	375	525	3,114,965.00	37	48	735,440.00	989,636.00	91,180.50	70,497,091.50	2.90
weekly change	-7.73%		-0.57%			1.46%	-0.29%	-1.61%	15.23%			10.24%			8.67%	-2.30%	-2.89%	-5.37%	
	<b>SALES</b>		<b>SALES</b>			<b>SALES</b>	<b>SALES</b>	<b>SALES</b>	<b>SALES</b>			<b>SALES</b>			<b>SALES</b>	<b>SALES</b>	<b>SALES</b>	<b>SALES</b>	<b>% of Sales</b>
Startup to date	37,259,024,893.00		10,577,848,517.00			3,679,425,825.50	14,311,134.00	2,214,077,731.00	494,175,385.00			1,210,221,606.45			280,966,797.00	107,619,599.50	15,542,236.00	56,061,347,696.45	100.0%
Calendar Year to date	70,008,242.00		6,538,266.00			6,740,260.50	129,025.00	1,692,775.00	1,091,069.00			4,074,149.00			966,568.00	1,315,038.50	121,543.00	92,676,936.00	100.0%
Fiscal Year to date 2010	986,906,594.00		98,234,970.00			95,828,068.00	1,910,058.50	24,173,591.00	16,387,454.00			68,691,007.00			15,398,510.00	18,569,388.50	1,788,409.00	1,327,888,050.00	100.0%