



WEEKLY SALES SUMMARY

Unaudited

[Week Ending: 01/16/2010](#)

Texas Lottery Commission
Fiscal Year to Date Sales Comparison
Unaudited

Through the week ending 01/16/2010 (20 weeks)

Sales by Game	FY 2008 *	FY 2009 **	FY 2010	\$ Change		% Change	
				FY 2010 to FY 2008	FY 2010 to FY 2009 to	FY 2010 to FY 2008	FY 2010 to FY 2009
Instants	\$ 1,076,578,591	\$ 1,032,325,985	\$ 1,037,431,523	\$ -39,147,068	\$ 5,105,538	-3.6%	0.5%
Lotto Texas	81,764,649	69,321,475	102,930,292	21,165,643	33,608,818	25.9%	48.5%
Pick 3	108,413,749	106,169,777	100,954,908	-7,458,841	-5,214,869	-6.9%	-4.9%
Pick 3 Sum It Up	1,888,883	2,245,131	2,007,415	118,532	-237,717	-	-10.6%
Cash 5	29,828,841	27,016,236	25,465,457	-4,363,384	-1,550,779	-14.6%	-5.7%
Texas Two Step	15,830,831	17,355,829	17,327,644	1,496,813	-28,185	9.5%	-0.2%
Mega Millions	55,875,051	64,738,322	72,173,823	16,298,772	7,435,502	29.2%	11.5%
Megaplier	13,926,524	15,387,739	16,184,180	2,257,656	796,441	16.2%	5.2%
Daily 4	15,718,472	16,140,660	19,546,857	3,828,385	3,406,197	-	21.1%
Daily 4 Sum It Up	4,033,408	2,056,270	1,879,929	-2,153,479	-176,341	-	-8.6%
Total	\$ 1,403,858,997	\$ 1,352,757,423	\$ 1,395,902,027	\$ -7,956,971	\$ 43,144,604	-0.6%	3.2%

* 3 extra days ** 1 extra day

Texas Lottery Commission
 Fiscal Year to Date Cumulative Average Sales Comparison
 Unaudited

Through the week ending 01/16/2010 (20 weeks)

Sales by Game	FY 2008	FY 2009	FY 2010
Instant	\$ 7,635,309	\$ 7,426,806	\$ 7,517,620
Lotto Texas	579,891	498,716	745,872
Pick 3	768,892	763,811	731,557
Pick 3 Sum It Up	13,396	16,152	14,546
Cash 5	211,552	194,361	184,532
Texas Two Step	112,275	124,862	125,563
Mega Millions	396,277	465,743	522,999
Megaplier	98,770	110,703	117,277
Daily 4	111,479	116,120	141,644
Daily 4 Sum It Up	28,606	14,793	13,623
Total	\$ <u>9,956,447</u>	\$ <u>9,732,068</u>	\$ <u>10,115,232</u>
	thru 01/19/2008 141 days	thru 01/17/2009 139 days	thru 01/16/2010 138 days

Texas Lottery Commission
Fiscal Year Over Year Change in Sales
Unaudited
FY 2010 Compared to FY 2009

Week	FY 2010 Week Ending	INSTANT TICKETS				ON-LINE GAMES				TOTAL SALES			
		FY 2010	FY 2009	Difference	% change - Cumulative Sales	FY 2010	FY 2009	Difference	% change - Cumulative Sales	FY 2010	FY 2009	Difference	% change - Cumulative Sales
1	9/5/2009**	\$40,148,241	\$44,890,104	(\$4,741,863)	-10.6%	\$15,859,194	\$14,722,011	\$1,137,184	7.7%	\$56,007,435	\$59,612,115	(\$3,604,680)	-6.0%
2	9/12/2009	\$49,896,100	\$46,309,551	\$3,586,549	7.7%	\$18,206,315	\$13,704,860	\$4,501,455	32.8%	\$68,102,415	\$60,014,411	\$8,088,004	13.5%
3	9/19/2009	\$50,971,937	\$42,923,171	\$8,048,766	18.8%	\$18,859,622	\$12,291,263	\$6,568,359	53.4%	\$69,831,559	\$55,214,434	\$14,617,125	26.5%
4	9/26/2009	\$49,975,243	\$47,042,801	\$2,932,442	6.2%	\$19,345,435	\$14,222,339	\$5,123,096	36.0%	\$69,320,678	\$61,265,140	\$8,055,538	13.1%
5	10/3/2009	\$52,283,569	\$50,747,162	\$1,536,407	3.0%	\$20,991,695	\$15,784,472	\$5,207,223	33.0%	\$73,275,264	\$66,531,634	\$6,743,630	10.1%
6	10/10/2009	\$52,238,261	\$49,763,789	\$2,474,472	5.0%	\$21,547,439	\$15,622,498	\$5,924,941	37.9%	\$73,785,700	\$65,386,287	\$8,399,413	12.8%
7	10/17/2009	\$50,806,599	\$49,299,053	\$1,507,546	3.1%	\$23,114,594	\$15,167,940	\$7,946,654	52.4%	\$73,921,193	\$64,466,993	\$9,454,200	14.7%
8	10/24/2009	\$50,731,592	\$49,977,581	\$754,011	1.5%	\$17,274,411	\$14,525,843	\$2,748,568	18.9%	\$68,006,003	\$64,503,424	\$3,502,579	5.4%
9	10/31/2009	\$50,684,853	\$50,346,542	\$338,311	0.7%	\$15,710,720	\$14,838,845	\$871,876	5.9%	\$66,395,573	\$65,185,387	\$1,210,187	1.9%
10	11/7/2009	\$54,633,928	\$54,860,087	(\$226,159)	-0.4%	\$16,961,611	\$16,057,069	\$904,542	5.6%	\$71,595,539	\$70,917,156	\$678,383	1.0%
11	11/14/2009	\$52,109,218	\$53,484,812	(\$1,375,594)	-2.6%	\$16,407,349	\$15,829,819	\$577,530	3.6%	\$68,516,567	\$69,314,631	(\$798,064)	-1.2%
12	11/21/2009	\$52,427,881	\$52,806,511	(\$378,630)	-0.7%	\$15,829,561	\$16,460,748	(\$631,187)	-3.8%	\$68,257,442	\$69,267,259	(\$1,009,817)	-1.5%
13	11/28/2009	\$50,519,477	\$52,199,741	(\$1,680,264)	-3.2%	\$15,710,447	\$17,397,576	(\$1,687,129)	-9.7%	\$66,229,924	\$69,597,317	(\$3,367,393)	-4.8%
14	12/5/2009	\$54,376,448	\$56,731,851	(\$2,355,403)	-4.2%	\$16,905,341	\$20,363,789	(\$3,458,449)	-17.0%	\$71,281,789	\$77,095,640	(\$5,813,852)	-7.5%
15	12/12/2009	\$52,654,632	\$54,109,617	(\$1,454,985)	-2.7%	\$17,726,695	\$22,952,228	(\$5,225,533)	-22.8%	\$70,381,327	\$77,061,845	(\$6,680,518)	-8.7%
16	12/19/2009	\$54,542,793	\$55,777,328	(\$1,234,535)	-2.2%	\$19,379,751	\$15,833,517	\$3,546,234	22.4%	\$73,922,544	\$71,610,845	\$2,311,699	3.2%
17	12/26/2009	\$56,482,042	\$57,597,885	(\$1,115,843)	-1.9%	\$17,582,779	\$15,851,771	\$1,731,009	10.9%	\$74,064,821	\$73,449,656	\$615,166	0.8%
18	1/2/2010	\$57,952,304	\$57,582,115	\$370,189	0.6%	\$16,542,885	\$16,900,028	(\$357,143)	-2.1%	\$74,495,189	\$74,482,143	\$13,047	0.0%
19	1/9/2010	\$53,471,476	\$54,250,945	(\$779,469)	-1.4%	\$17,025,616	\$16,203,220	\$822,396	5.1%	\$70,497,092	\$70,454,165	\$42,927	0.1%
20	1/16/2010	\$50,524,929	\$51,625,339	(\$1,100,410)	-2.1%	\$17,489,048	\$15,701,605	\$1,787,443	11.4%	\$68,013,977	\$67,326,944	\$687,033	1.0%
21	1/23/2010		\$52,789,573				\$15,897,473				\$68,687,046		
22	1/30/2010		\$55,453,471				\$16,908,272				\$72,361,743		
23	2/6/2010		\$62,247,711				\$18,354,314				\$80,602,025		
24	2/13/2010		\$60,509,056				\$19,218,078				\$79,727,134		
25	2/20/2010		\$59,194,623				\$21,098,199				\$80,292,822		
26	2/27/2010		\$58,857,216				\$24,116,924				\$82,974,140		
27	3/6/2010		\$59,552,257				\$23,995,136				\$83,547,393		
28	3/13/2010		\$53,754,084				\$18,769,831				\$72,523,915		
29	3/20/2010		\$52,581,107				\$15,903,038				\$68,484,145		
30	3/27/2010		\$52,560,961				\$16,094,933				\$68,655,894		
31	4/3/2010		\$56,249,759				\$17,357,002				\$73,606,761		
32	4/10/2010		\$54,440,987				\$17,660,600				\$72,101,587		
33	4/17/2010		\$52,755,834				\$18,469,585				\$71,225,419		
34	4/24/2010		\$51,450,968				\$20,216,898				\$71,667,866		
35	5/1/2010		\$52,327,090				\$23,520,573				\$75,847,663		
36	5/8/2010		\$53,214,412				\$16,241,207				\$69,455,619		
37	5/15/2010		\$50,785,227				\$15,990,544				\$66,775,771		
38	5/22/2010		\$56,567,077				\$15,874,447				\$72,441,524		
39	5/29/2010		\$55,359,239				\$16,040,196				\$71,399,435		
40	6/5/2010		\$60,250,125				\$16,301,599				\$76,551,724		
41	6/12/2010		\$54,979,517				\$16,143,215				\$71,122,732		
42	6/19/2010		\$53,109,433				\$16,357,924				\$69,467,357		

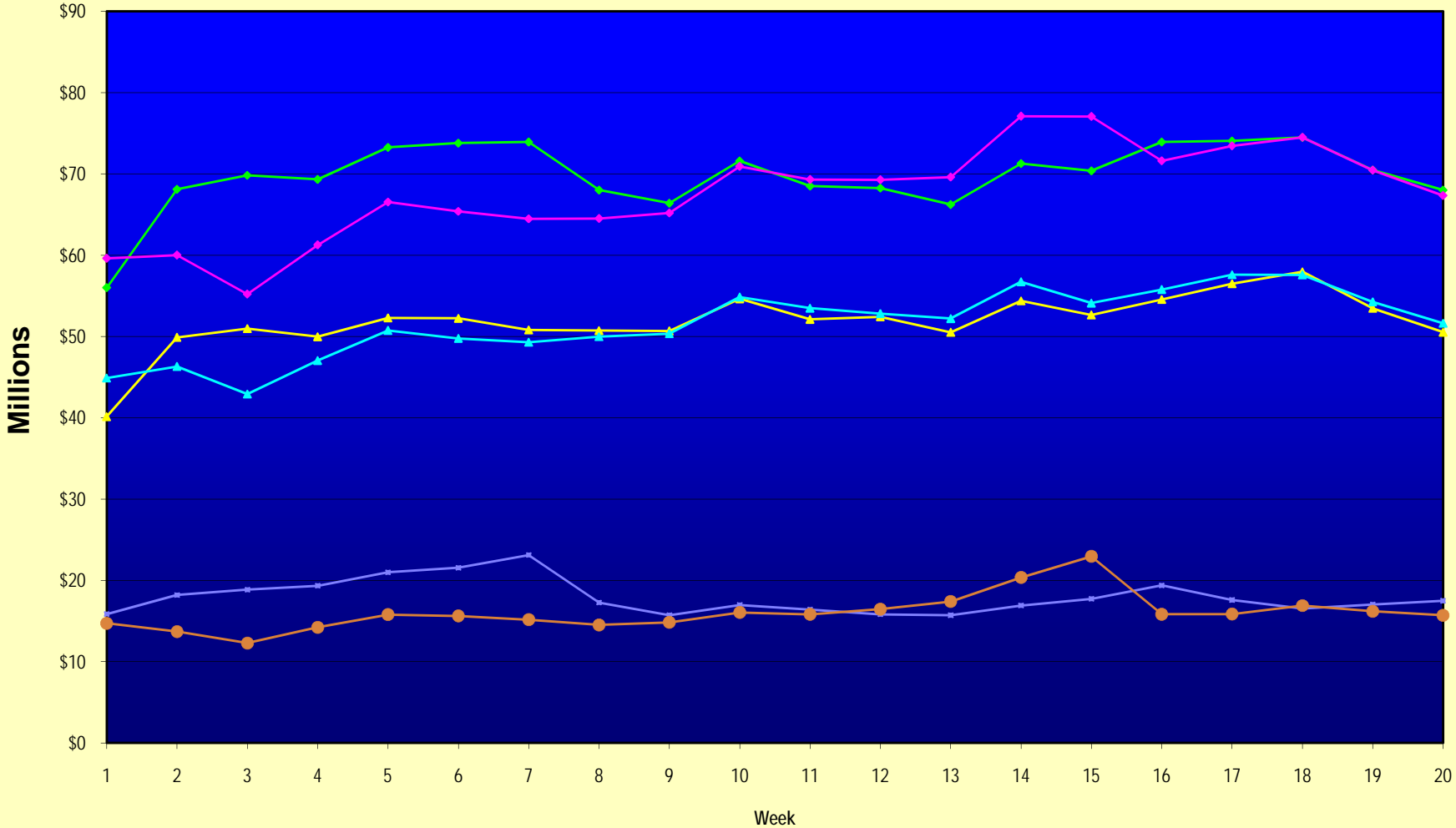
Note: Week 1 is not a full week of sales as this report is prepared on a Fiscal Year basis.

Texas Lottery Commission
Fiscal Year Over Year Change in Sales
Unaudited
FY 2010 Compared to FY 2009

Week	FY 2010 Week Ending	INSTANT TICKETS				ON-LINE GAMES				TOTAL SALES			
		FY 2010	FY 2009	Difference	% change - Cumulative Sales	FY 2010	FY 2009	Difference	% change - Cumulative Sales	FY 2010	FY 2009	Difference	% change - Cumulative Sales
43	6/26/2010		\$53,431,083				\$16,786,203				\$70,217,286		
44	7/3/2010		\$55,518,615				\$18,292,421				\$73,811,036		
45	7/10/2010		\$53,004,390				\$17,842,530				\$70,846,920		
46	7/17/2010		\$52,498,940				\$16,138,341				\$68,637,281		
47	7/24/2010		\$51,550,731				\$16,748,137				\$68,298,868		
48	7/31/2010		\$51,893,977				\$18,065,180				\$69,959,157		
49	8/7/2010		\$54,506,395				\$19,258,117				\$73,764,512		
50	8/14/2010		\$51,766,530				\$20,828,293				\$72,594,823		
51	8/21/2010		\$51,909,040				\$24,913,396				\$76,822,436		
52	8/28/2010		\$50,848,517				\$35,661,563				\$86,510,080		
53			\$13,288,367				\$3,085,816				\$16,374,183		
Total thru Current Week		\$1,037,431,523	\$1,032,325,985	\$5,105,538	0.5%	\$358,470,504	\$320,431,438	\$38,039,066	11.9%	\$1,395,902,027	\$1,352,757,423	\$43,144,604	3.2%
Fiscal Year Total		\$1,037,431,523	\$2,791,532,297			\$358,470,504	\$928,581,414			\$1,395,902,027	\$3,720,113,711		

** FY 2010 includes 5 days; FY 2009 includes 6 days

Texas Lottery Commission Fiscal Year Over Year Change in Sales



◆ Total Sales 2010
 ◆ Total Sales 2009
 ▲ Instant Tickets 2010
 ▲ Instant Tickets 2009
 ◆ On-Line Games 2010
 ● On-Line Games 2009

Note: Week 1 is not a full week of sales as this report is prepared on a Fiscal Year basis.

Texas Lottery Commission
Instant Tickets by Price Point
Sales, Prize Expense, Sales Contribution and Payout Percentage With Year Over Year Changes
Unaudited

Fiscal Year	Price Point	# of Active Games	FY Sales	% of Instant Ticket Sales	Year over Year Change in Sales	FY Prize Expense	Year over Year Change in Prize Expense	FY Sales Contribution	Year over Year Change in Contribution	Average Prize Payout %	Year over Year Change in Payout %
2009	\$1.00	36	91,422,380	8.9%		55,015,570		36,406,810		60.2%	0.1%
thru	\$2.00	31	176,885,361	17.1%		114,699,981		62,185,380		64.8%	-0.7%
1/17/2009	\$3.00	14	111,229,740	10.8%		73,119,440		38,110,300		65.7%	0.0%
	\$5.00	34	317,052,264	30.7%		215,635,865		101,416,399		68.0%	0.1%
	\$7.00	6	45,158,085	4.4%		30,714,002		14,444,083		68.0%	0.0%
	\$10.00	14	140,057,690	13.6%		98,022,035		42,035,655		70.0%	0.0%
	\$20.00	7	97,010,240	9.4%		69,626,149		27,384,091		71.8%	0.0%
	\$25.00	1	2,374,825	0.2%		1,727,324		647,501		72.7%	0.2%
	\$30.00	3	9,127,500	0.9%		6,614,080		2,513,420		72.5%	0.1%
	\$50.00	3	42,007,900	4.1%		30,368,722		11,639,178		72.3%	0.2%
Total		149	\$1,032,325,985			\$695,543,169		\$336,782,816		67.4%	-0.4%
2010	\$1.00	30	87,795,132	8.5%		52,767,718		35,027,414		60.1%	0.0%
thru	\$2.00	32	148,791,712	14.3%		98,144,167		50,647,545		66.0%	1.3%
1/16/2010	\$3.00	15	129,421,266	12.5%		85,092,679		44,328,587		65.7%	0.2%
	\$5.00	35	298,810,008	28.8%		202,998,210		95,811,798		67.9%	-0.1%
	\$7.00	5	41,559,595	4.0%		28,259,634		13,299,961		68.0%	0.0%
	\$10.00	13	151,861,870	14.6%		106,228,449		45,633,421		70.0%	0.0%
	\$20.00	5	152,166,340	14.7%		113,589,461		38,576,879		74.6%	2.1%
	\$25.00	0	-	0.0%		-		-		0.0%	-100.0%
	\$30.00	0	-	0.0%		-		-		0.0%	-100.0%
	\$50.00	2	27,025,600	2.6%		20,934,913		6,090,687		77.5%	3.9%
Total		137	\$1,037,431,523			\$708,015,232		\$329,416,291		68.2%	0.7%
Variance	\$1.00	-6	-3,627,248		-4.0%	-2,247,852	-4.1%	-1,379,396	-3.8%	-0.07%	
2010 to	\$2.00	1	-28,093,649		-15.9%	-16,555,814	-14.4%	-11,537,835	-18.6%	1.12%	
2009	\$3.00	1	18,191,526		16.4%	11,973,240	16.4%	6,218,286	16.3%	0.01%	
	\$5.00	1	-18,242,256		-5.8%	-12,637,655	-5.9%	-5,604,601	-5.5%	-0.08%	
	\$7.00	-1	-3,598,490		-8.0%	-2,454,369	-8.0%	-1,144,121	-7.9%	-0.02%	
	\$10.00	-1	11,804,180		8.4%	8,206,414	8.4%	3,597,766	8.6%	-0.04%	
	\$20.00	-2	55,156,100		56.9%	43,963,312	63.1%	11,192,788	40.9%	2.88%	
	\$25.00	-1	-2,374,825		-100.0%	-1,727,324	-100.0%	-647,501	-100.0%	-72.73%	
	\$30.00	-3	-9,127,500		-100.0%	-6,614,080	-100.0%	-2,513,420	-100.0%	-72.46%	
	\$50.00	-1	-14,982,300		-35.7%	-9,433,809	-31.1%	-5,548,491	-47.7%	5.17%	
Total		-12	\$5,105,538		0.5%	\$12,472,063	1.8%	-\$7,366,525	-2.2%	0.87%	

Texas Lottery Commission
Instant Tickets by Price Point
Sales, Prize Expense, Sales Contribution and Payout Percentage With Year Over Year Changes
 Unaudited

Notes - Instant Ticket Variances

		FY 2010		FY 2009		Difference
Sales	\$1 - \$7		\$706,377,713		\$741,747,830	-\$35,370,117
Prize Exp.	\$1 - \$7		\$467,262,408		\$489,184,858	-\$21,922,450
Sales Cont.	\$1 - \$7		\$239,115,305		\$252,562,972	-\$13,447,667
Prize Exp. %	\$1 - \$7		66.1%		66.0%	0.2%
		FY 2010		FY 2009		Difference
Sales	\$10 - \$50		\$331,053,810		\$290,578,155	\$40,475,655
Prize Exp.	\$10 - \$50		\$240,752,824		\$206,358,311	\$34,394,513
Sales Cont.	\$10 - \$50		\$90,300,986		\$84,219,844	\$6,081,142
Prize Exp. %	\$10 - \$50		72.7%		71.0%	1.7%
		FY 2010		FY 2009		Difference
Sales	Instant		\$1,037,431,523		\$1,032,325,985	\$5,105,538
Prize Exp.	Instant		\$708,015,232		\$695,543,169	\$12,472,063
Sales Cont.	Instant		\$329,416,291		\$336,782,816	-\$7,366,525
Prize Exp. %	Instant		68.2%		67.4%	0.9%

		FY 2010		FY 2009		Difference
Sales	\$1 - \$10		\$858,239,583		\$881,805,520	-\$23,565,937
Prize Exp.	\$1 - \$10		\$573,490,857		\$587,206,893	-\$13,716,036
Sales Cont.	\$1 - \$10		\$284,748,726		\$294,598,627	-\$9,849,901
Prize Exp. %	\$1 - \$10		66.8%		66.6%	0.2%
		FY 2010		FY 2009		Difference
Sales	\$20 - \$50		\$179,191,940		\$150,520,465	\$28,671,475
Prize Exp.	\$20 - \$50		\$134,524,375		\$108,336,276	\$26,188,099
Sales Cont.	\$20 - \$50		\$44,667,565		\$42,184,189	\$2,483,376
Prize Exp. %	\$20 - \$50		75.1%		72.0%	3.1%
		FY 2010		FY 2009		Difference
Sales	Instant		\$1,037,431,523		\$1,032,325,985	\$5,105,538
Prize Exp.	Instant		\$708,015,232		\$695,543,169	\$12,472,063
Sales Cont.	Instant		\$329,416,291		\$336,782,816	-\$7,366,525
Prize Exp. %	Instant		68.2%		67.4%	0.9%

Texas Lottery Commission
 Weekly Sales Summary
 & Comparison to Previous Week
 Unaudited

	Week Ending 01/16/2010		Week Ending 01/09/2010			
	<u>THIS WEEK</u>	% of Sales	<u>LAST WEEK</u>	% of Sales	<u>\$ change</u>	<u>% change</u>
Total Sales	<u>\$68,013,977</u>		<u>\$70,497,092</u>		<u>-\$2,483,115</u>	-3.52%
Instant Tickets	<u>\$50,524,929</u>	74.3%	<u>\$53,471,476</u>	75.8%	<u>-\$2,946,547</u>	-5.51%
Lotto Texas	\$4,695,322	6.9%	\$4,579,485	6.5%	\$115,837	2.53%
Pick 3	\$5,126,840	7.5%	\$5,094,846	7.2%	\$31,994	0.63%
Pick 3 Sum It Up	\$97,356	0.1%	\$97,216	0.1%	\$140	0.14%
Cash 5	\$1,291,866	1.9%	\$1,297,994	1.8%	-\$6,128	-0.47%
Texas Two Step	\$940,190	1.4%	\$1,024,853	1.5%	-\$84,663	-8.26%
Mega Millions	\$3,482,816	5.1%	\$3,114,965	4.4%	\$367,851	11.81%
Megaplier	\$785,670	1.2%	\$735,440	1.0%	\$50,230	6.83%
Daily 4	\$977,468	1.4%	\$989,636	1.4%	-\$12,168	-1.23%
Daily 4 Sum It Up	\$91,520	0.1%	\$91,181	0.1%	\$340	0.37%
Total Online Sales	<u>\$17,489,048</u>		<u>\$17,025,616</u>		<u>\$463,432</u>	2.72%

* Totals may not sum due to rounding.

Texas Lottery Commission
Weekly Sales Summary
Unaudited

INSTANT TICKETS
TOP TEN SELLING GAMES

For the Week Ending : 01/16/2010

Rank	Price Point	Game	Sales (Millions)
1	\$ 20	\$500,000,000 BLOCKBUSTER	\$ 4.665
2	\$ 10	GOLD BAR BONANZA	\$ 4.138
3	\$ 5	CASINO ROYALE	\$ 2.410
4	\$ 5	\$50,000 CASH	\$ 1.944
5	\$ 3	BONUS CASHWORD	\$ 1.601
6	\$ 10	SET FOR LIFE	\$ 1.583
7	\$ 5	FIVE STAR CASH	\$ 1.569
8	\$ 2	BREAK THE BANK	\$ 1.518
9	\$ 10	JINGLE JUMBO BUCKS	\$ 1.505
10	\$ 3	BONUS WORD CASHWORD	\$ 1.505

Texas Lottery Commission
Prize Payout Tracking Report
Unaudited

Through Week Ending 01/16/2010

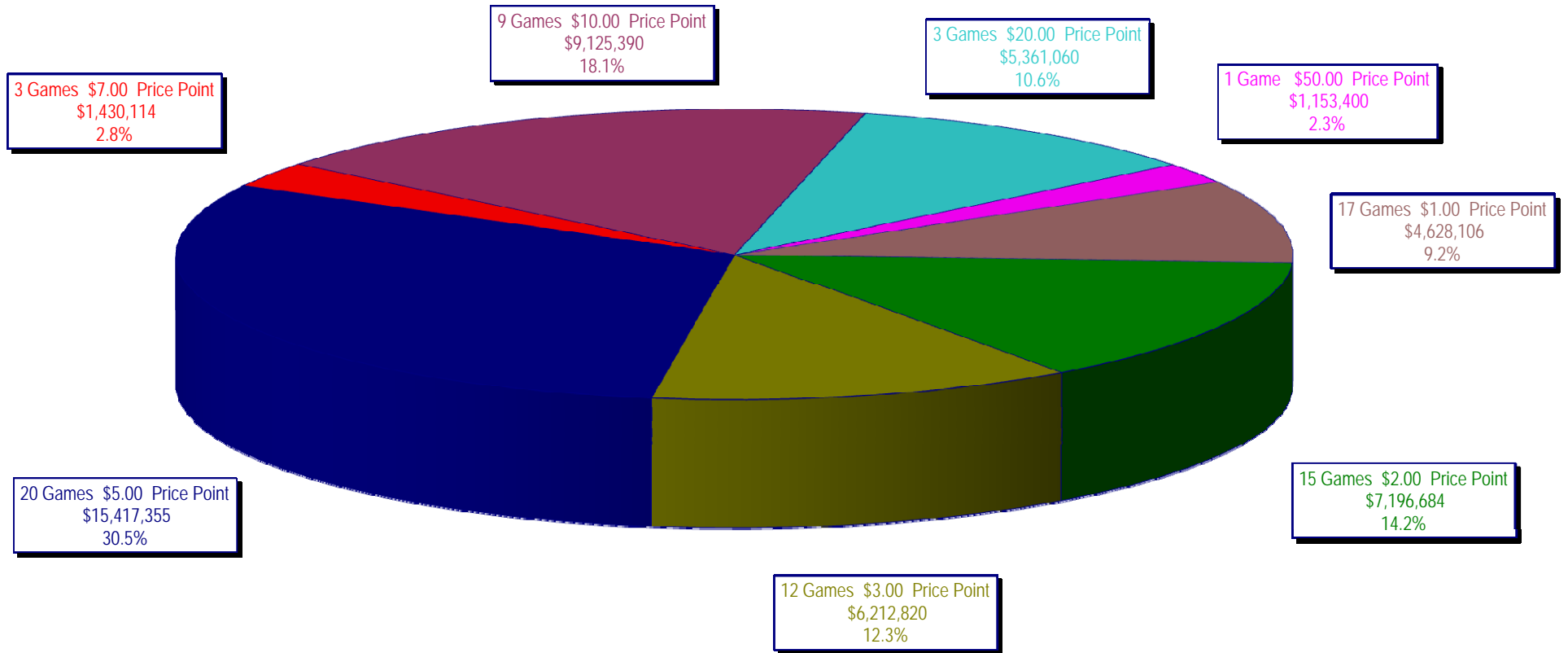
On-Line Sales

		FY Sales Through Week Ending 1/16/2010		FY Prize Expense Through Week Ending 1/16/2010	Actual* Prize Payout	Base Payout (Prize Pool)
Lotto	\$	102,930,292	\$	51,496,961	50.03%	50.00%
Pick 3		100,954,908		47,954,840	47.50%	50.00%
Pick 3 Sum It Up		2,007,415		921,109	45.89%	50.00%
Cash 5		25,465,457		13,697,703	53.79%	50.00%
Texas Two-Step		17,327,644		8,998,999	51.93%	50.00%
Mega Millions		72,173,823		36,159,940	50.10%	50.00%**
Megaplier		16,184,180		5,013,543	30.98%	N/A
Daily 4		19,546,857		9,171,550	46.92%	50.00%
Daily 4-Sum It Up		1,879,929		804,996	42.82%	50.00%
Totals	\$	358,470,504	\$	174,219,640	48.60%	

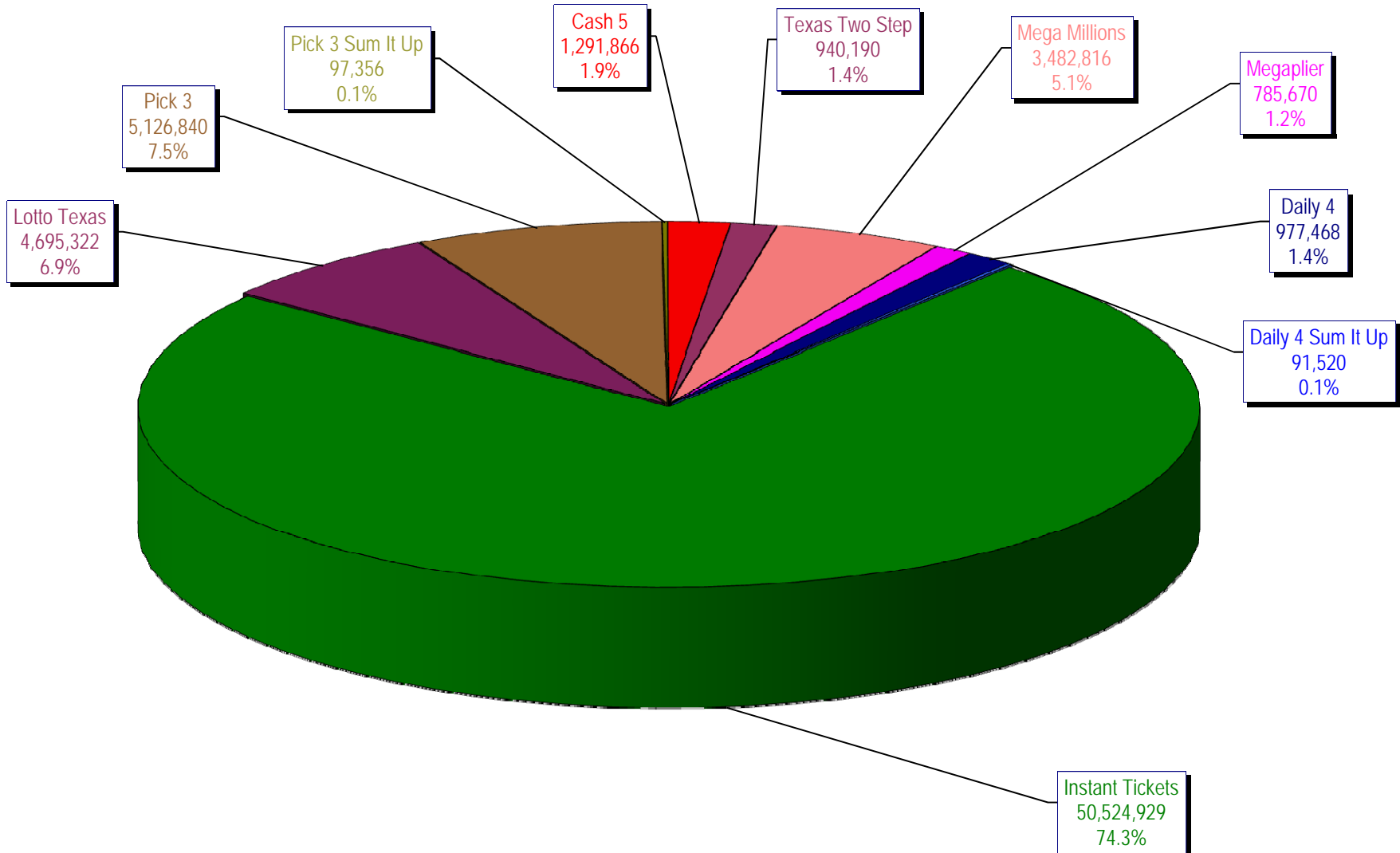
* Before Unclaimed Prizes

** Estimated; depends on # of guaranteed prizes won in Texas

Texas Lottery Commission
Instant Ticket Sales
For the Week Ending 01/16/2010
(Unaudited)



Texas Lottery Commission
All Game Sales
For the Week Ending 01/16/2010
(Unaudited)



Texas Lottery Commission - Weekly Sales Summary for FY 2010 (Unaudited)

Week Ended	Instant Games	New Games & Dates	Lotto Texas	Jackpot W	S	Pick 3	Pick 3 Sum It Up	Cash 5	Texas Two Step	Jackpot M	TH	Mega Millions	Jackpot T	F	Megaplier	Daily 4	Daily 4 Sum It Up	Total	Per Cap.
9/5/2009	53,436,608.00	1183 (\$2,N) - 08/31/09	6,294,287.00	45	47	5,276,229.00	104,886.00	1,338,093.00	1,212,330.00	1.2	200	2,959,401.00	12	12	708,622.00	955,411.00	95,751.00	72,381,618.00	2.98
9/12/2009	49,896,100.00	1200 (\$1,N); 1201 (\$10,N) - 09/07/09	6,426,945.00	49	51	5,109,927.50	104,641.00	1,278,982.00	771,782.00	225	200	2,811,431.00	18	28	693,407.00	918,268.00	90,931.50	68,102,415.00	2.80
9/19/2009	50,971,937.00	1202 (\$3,N); 1185 (\$5,N) - 09/14/09	6,496,645.00	53	55	5,176,010.00	103,700.00	1,295,302.00	803,124.00	200	225	3,164,844.00	38	51	760,088.00	965,671.50	94,237.00	69,831,558.50	2.87
9/26/2009	49,975,243.00	1141 (\$1,N); 1259 (\$3,N) - 09/21/09	6,765,369.00	57	59	4,894,237.50	98,171.00	1,271,129.00	915,249.00	275	400	3,568,088.00	62	75	822,408.00	918,596.00	92,187.50	69,320,678.00	2.85
10/3/2009	52,283,569.00	1203 (\$2,N); 1172 (\$5,N) - 09/28/09	7,003,107.00	61	63	5,156,873.00	102,841.50	1,315,863.00	1,111,913.00	525	650	4,270,019.00	88	105	939,935.00	993,158.50	97,984.50	73,275,263.50	3.01
10/10/2009	52,238,261.00	1205 (\$1,N); 1263 (\$3,N) - 10/05/09	7,061,948.00	64	67	5,050,571.00	102,586.50	1,300,852.00	811,464.00	200	225	5,100,350.00	122	145	1,050,507.00	971,147.50	98,012.50	73,785,699.50	3.03
10/17/2009	50,806,599.00	1187 (\$2,N); 1193 (\$20,N) - 10/12/09	7,262,683.00	70	73	4,990,457.00	99,389.50	1,276,305.00	769,253.00	200	200	6,449,660.00	170	200	1,245,391.00	931,084.00	90,371.00	73,921,192.50	3.04
10/24/2009	50,731,592.00	1188 (\$3,N); 1189 (\$5,N) - 10/19/09	5,785,292.00	76	4	4,845,815.00	93,256.00	1,282,033.00	806,971.00	225	275	2,776,628.00	12	18	663,491.00	931,641.00	89,284.00	68,006,003.00	2.80
10/31/2009	50,684,853.00	1192 (\$10,N); 1186 (\$1,N) - 10/26/09	3,749,006.00	5	6	4,944,409.00	98,542.50	1,289,523.00	815,750.00	375	200	2,988,991.00	28	40	717,574.00	1,006,435.00	100,489.50	66,395,573.00	2.73
11/7/2009	54,633,928.00	1191 (\$7,N) - 11/02/09	3,982,319.00	7	8	5,265,020.50	105,180.50	1,339,215.00	853,140.00	225	275	3,458,403.00	50	63	795,045.00	1,058,564.00	104,724.00	71,595,539.00	2.94
11/14/2009	52,109,218.00	1218 (\$2,N); 1184 (\$5,N) - 11/09/09	3,985,493.00	9	10	5,172,602.50	104,782.00	1,274,573.00	829,607.00	375	200	3,210,618.00	77	12	752,365.00	983,342.50	93,966.00	68,516,567.00	2.82
11/21/2009	52,427,881.00	0	3,943,958.00	11	12	5,123,802.00	104,705.00	1,255,026.00	797,796.00	225	275	2,834,318.00	17	27	687,221.00	990,042.00	92,693.00	68,257,442.00	2.81
11/28/2009	50,519,477.00	1206 (\$1,N); 1190 (\$5,N); 1264 (\$1,N) - 11/23/09	3,966,034.00	13	14	5,043,210.00	102,783.50	1,202,798.00	693,774.00	200	225	2,932,809.00	37	47	691,194.00	985,336.50	92,508.00	66,229,924.00	2.72
12/5/2009	54,376,448.00	0	4,004,632.00	15	16	5,393,458.00	111,441.50	1,288,282.00	873,210.00	250	350	3,297,486.00	57	69	773,136.00	1,063,424.00	100,271.00	71,281,788.50	2.93
12/12/2009	52,654,632.00	1159 (\$2,N); 1182 (\$5,N) - 12/07/09 1196 (\$5,N) - 12/09/09	4,105,013.00	17	18	5,091,389.00	102,613.50	1,294,933.00	1,075,732.00	475	600	4,054,401.00	83	100	874,842.00	1,030,471.50	97,299.50	70,381,326.50	2.89
12/19/2009	54,542,793.00	1207 (\$1,N); 1208 (\$3,N) - 12/14/09	4,355,440.00	20	21	5,115,559.00	100,562.50	1,293,347.00	1,288,820.00	750	925	5,052,350.00	118	140	1,028,695.00	1,046,577.50	98,399.50	73,922,543.50	3.04
12/26/2009	56,482,042.00	1209 (\$2,N); 1168 (\$5,N) - 12/21/09	4,400,669.00	22	24	4,950,247.50	92,929.50	1,243,523.00	767,273.00	200	200	4,188,741.00	162	12	866,559.00	982,220.50	90,616.50	74,064,821.00	3.04
1/2/2010	57,952,304.00	0	4,605,833.00	26	27	5,021,566.50	97,500.50	1,319,224.00	889,422.00	225	275	2,825,733.00	16	27	676,790.00	1,012,922.00	93,894.00	74,495,189.00	3.06
1/9/2010	53,471,476.00	1210 (1,N); 1211 (\$10,N) - 01/04/10	4,579,485.00	29	31	5,094,846.00	97,216.00	1,297,994.00	1,024,853.00	375	525	3,114,965.00	37	48	735,440.00	989,636.00	91,180.50	70,497,091.50	2.90
1/16/2010	50,524,929.00	1169 (\$1,N); 1212 (\$5,N) - 01/11/10	4,695,322.00	32	33	5,126,839.50	97,356.00	1,291,866.00	940,190.00	200	200	3,482,816.00	60	73	785,670.00	977,468.00	91,520.00	68,013,976.50	2.80
weekly change	-5.51%		2.53%			0.63%	0.14%	-0.47%	-8.26%			11.81%			6.83%	-1.23%	0.37%	-3.52%	
	SALES		SALES			SALES	SALES	SALES	SALES			SALES			SALES	SALES	SALES	SALES	% of Sales
Startup to date	37,309,549,822.00		10,582,543,839.00			3,684,552,665.00	14,408,490.00	2,215,369,597.00	495,115,575.00			1,213,704,422.45			281,752,467.00	108,597,067.50	15,633,756.00	56,129,361,672.95	100.0%
Calendar Year to date	120,533,171.00		11,233,588.00			11,867,100.00	129,025.00	2,984,641.00	2,031,259.00			7,556,965.00			1,752,238.00	2,292,506.50	213,063.00	160,593,556.50	100.0%
Fiscal Year to date 2010	1,037,431,523.00		102,930,292.00			100,954,907.50	2,007,414.50	25,465,457.00	17,327,644.00			72,173,823.00			16,184,180.00	19,546,856.50	1,879,929.00	1,395,902,026.50	100.0%