



WEEKLY SALES SUMMARY

Unaudited

Week Ending: 01/23/2010

Texas Lottery Commission
Fiscal Year to Date Sales Comparison
Unaudited

Through the week ending 01/23/2010 (21 weeks)

Sales by Game	FY 2008 *	FY 2009 **	FY 2010	\$ Change		% Change	
				FY 2010 to FY 2008	FY 2010 to FY 2009 to	FY 2010 to FY 2008	FY 2010 to FY 2009
Instants	\$ 1,131,018,481	\$ 1,085,115,558	\$ 1,088,803,843	\$ -42,214,638	\$ 3,688,285	-3.7%	0.3%
Lotto Texas	85,801,467	73,045,310	107,707,671	21,906,204	34,662,361	25.5%	47.5%
Pick 3	114,077,000	111,684,324	105,977,207	-8,099,793	-5,707,117	-7.1%	-5.1%
Pick 3 Sum It Up	2,057,325	2,360,959	2,102,901	45,577	-258,058	2.2%	-10.9%
Cash 5	31,286,239	28,392,931	26,743,954	-4,542,285	-1,648,977	-14.5%	-5.8%
Texas Two Step	16,515,756	18,216,312	18,108,661	1,592,905	-107,651	9.6%	-0.6%
Mega Millions	58,846,064	67,430,933	76,198,235	17,352,171	8,767,303	29.5%	13.0%
Megaplier	14,656,816	16,064,675	17,047,129	2,390,313	982,454	16.3%	6.1%
Daily 4	16,543,799	16,977,656	20,523,920	3,980,121	3,546,264	24.1%	20.9%
Daily 4 Sum It Up	4,187,665	2,155,811	1,969,085	-2,218,580	-186,727	-53.0%	-8.7%
Total	\$ 1,474,990,611	\$ 1,421,444,468	\$ 1,465,182,605	\$ -9,808,005	\$ 43,738,137	-0.7%	3.1%

* 3 extra days ** 1 extra day

Texas Lottery Commission
 Fiscal Year to Date Cumulative Average Sales Comparison
 Unaudited

Through the week ending 01/23/2010 (21 weeks)

Sales by Game	FY 2008	FY 2009	FY 2010
Instants	\$ 7,642,017	\$ 7,432,298	\$ 7,508,992
Lotto Texas	579,740	500,310	742,812
Pick 3	770,791	764,961	730,877
Pick 3 Sum It Up	13,901	16,171	14,503
Cash 5	211,394	194,472	184,441
Texas Two Step	111,593	124,769	124,887
Mega Millions	397,609	461,856	525,505
Megaplier	99,033	110,032	117,566
Daily 4	111,782	116,285	141,544
Daily 4 Sum It Up	28,295	14,766	13,580
Total	\$ <u>9,966,153</u>	\$ <u>9,735,921</u>	\$ <u>10,104,708</u>
	thru 01/26/2008 148 days	thru 01/24/2009 146 days	thru 01/23/2010 145 days

Texas Lottery Commission
Fiscal Year Over Year Change in Sales
Unaudited
FY 2010 Compared to FY 2009

Week	FY 2010 Week Ending	INSTANT TICKETS				ON-LINE GAMES				TOTAL SALES			
		FY 2010	FY 2009	Difference	% change - Cumulative Sales	FY 2010	FY 2009	Difference	% change - Cumulative Sales	FY 2010	FY 2009	Difference	% change - Cumulative Sales
1	9/5/2009**	\$40,148,241	\$44,890,104	(\$4,741,863)	-10.6%	\$15,859,194	\$14,722,011	\$1,137,184	7.7%	\$56,007,435	\$59,612,115	(\$3,604,680)	-6.0%
2	9/12/2009	\$49,896,100	\$46,309,551	\$3,586,549	7.7%	\$18,206,315	\$13,704,860	\$4,501,455	32.8%	\$68,102,415	\$60,014,411	\$8,088,004	13.5%
3	9/19/2009	\$50,971,937	\$42,923,171	\$8,048,766	18.8%	\$18,859,622	\$12,291,263	\$6,568,359	53.4%	\$69,831,559	\$55,214,434	\$14,617,125	26.5%
4	9/26/2009	\$49,975,243	\$47,042,801	\$2,932,442	6.2%	\$19,345,435	\$14,222,339	\$5,123,096	36.0%	\$69,320,678	\$61,265,140	\$8,055,538	13.1%
5	10/3/2009	\$52,283,569	\$50,747,162	\$1,536,407	3.0%	\$20,991,695	\$15,784,472	\$5,207,223	33.0%	\$73,275,264	\$66,531,634	\$6,743,630	10.1%
6	10/10/2009	\$52,238,261	\$49,763,789	\$2,474,472	5.0%	\$21,547,439	\$15,622,498	\$5,924,941	37.9%	\$73,785,700	\$65,386,287	\$8,399,413	12.8%
7	10/17/2009	\$50,806,599	\$49,299,053	\$1,507,546	3.1%	\$23,114,594	\$15,167,940	\$7,946,654	52.4%	\$73,921,193	\$64,466,993	\$9,454,200	14.7%
8	10/24/2009	\$50,731,592	\$49,977,581	\$754,011	1.5%	\$17,274,411	\$14,525,843	\$2,748,568	18.9%	\$68,006,003	\$64,503,424	\$3,502,579	5.4%
9	10/31/2009	\$50,684,853	\$50,346,542	\$338,311	0.7%	\$15,710,720	\$14,838,845	\$871,876	5.9%	\$66,395,573	\$65,185,387	\$1,210,187	1.9%
10	11/7/2009	\$54,633,928	\$54,860,087	(\$226,159)	-0.4%	\$16,961,611	\$16,057,069	\$904,542	5.6%	\$71,595,539	\$70,917,156	\$678,383	1.0%
11	11/14/2009	\$52,109,218	\$53,484,812	(\$1,375,594)	-2.6%	\$16,407,349	\$15,829,819	\$577,530	3.6%	\$68,516,567	\$69,314,631	(\$798,064)	-1.2%
12	11/21/2009	\$52,427,881	\$52,806,511	(\$378,630)	-0.7%	\$15,829,561	\$16,460,748	(\$631,187)	-3.8%	\$68,257,442	\$69,267,259	(\$1,009,817)	-1.5%
13	11/28/2009	\$50,519,477	\$52,199,741	(\$1,680,264)	-3.2%	\$15,710,447	\$17,397,576	(\$1,687,129)	-9.7%	\$66,229,924	\$69,597,317	(\$3,367,393)	-4.8%
14	12/5/2009	\$54,376,448	\$56,731,851	(\$2,355,403)	-4.2%	\$16,905,341	\$20,363,789	(\$3,458,449)	-17.0%	\$71,281,789	\$77,095,640	(\$5,813,852)	-7.5%
15	12/12/2009	\$52,654,632	\$54,109,617	(\$1,454,985)	-2.7%	\$17,726,695	\$22,952,228	(\$5,225,533)	-22.8%	\$70,381,327	\$77,061,845	(\$6,680,518)	-8.7%
16	12/19/2009	\$54,542,793	\$55,777,328	(\$1,234,535)	-2.2%	\$19,379,751	\$15,833,517	\$3,546,234	22.4%	\$73,922,544	\$71,610,845	\$2,311,699	3.2%
17	12/26/2009	\$56,482,042	\$57,597,885	(\$1,115,843)	-1.9%	\$17,582,779	\$15,851,771	\$1,731,009	10.9%	\$74,064,821	\$73,449,656	\$615,166	0.8%
18	1/2/2010	\$57,952,304	\$57,582,115	\$370,189	0.6%	\$16,542,885	\$16,900,028	(\$357,143)	-2.1%	\$74,495,189	\$74,482,143	\$13,047	0.0%
19	1/9/2010	\$53,471,476	\$54,250,945	(\$779,469)	-1.4%	\$17,025,616	\$16,203,220	\$822,396	5.1%	\$70,497,092	\$70,454,165	\$42,927	0.1%
20	1/16/2010	\$50,524,929	\$51,625,339	(\$1,100,410)	-2.1%	\$17,489,048	\$15,701,605	\$1,787,443	11.4%	\$68,013,977	\$67,326,944	\$687,033	1.0%
21	1/23/2010	\$51,372,320	\$52,789,573	(\$1,417,253)	-2.7%	\$17,908,259	\$15,897,473	\$2,010,786	12.6%	\$69,280,579	\$68,687,046	\$593,533	0.9%
22	1/30/2010		\$55,453,471				\$16,908,272				\$72,361,743		
23	2/6/2010		\$62,247,711				\$18,354,314				\$80,602,025		
24	2/13/2010		\$60,509,056				\$19,218,078				\$79,727,134		
25	2/20/2010		\$59,194,623				\$21,098,199				\$80,292,822		
26	2/27/2010		\$58,857,216				\$24,116,924				\$82,974,140		
27	3/6/2010		\$59,552,257				\$23,995,136				\$83,547,393		
28	3/13/2010		\$53,754,084				\$18,769,831				\$72,523,915		
29	3/20/2010		\$52,581,107				\$15,903,038				\$68,484,145		
30	3/27/2010		\$52,560,961				\$16,094,933				\$68,655,894		
31	4/3/2010		\$56,249,759				\$17,357,002				\$73,606,761		
32	4/10/2010		\$54,440,987				\$17,660,600				\$72,101,587		
33	4/17/2010		\$52,755,834				\$18,469,585				\$71,225,419		
34	4/24/2010		\$51,450,968				\$20,216,898				\$71,667,866		
35	5/1/2010		\$52,327,090				\$23,520,573				\$75,847,663		
36	5/8/2010		\$53,214,412				\$16,241,207				\$69,455,619		
37	5/15/2010		\$50,785,227				\$15,990,544				\$66,775,771		
38	5/22/2010		\$56,567,077				\$15,874,447				\$72,441,524		
39	5/29/2010		\$55,359,239				\$16,040,196				\$71,399,435		
40	6/5/2010		\$60,250,125				\$16,301,599				\$76,551,724		
41	6/12/2010		\$54,979,517				\$16,143,215				\$71,122,732		
42	6/19/2010		\$53,109,433				\$16,357,924				\$69,467,357		

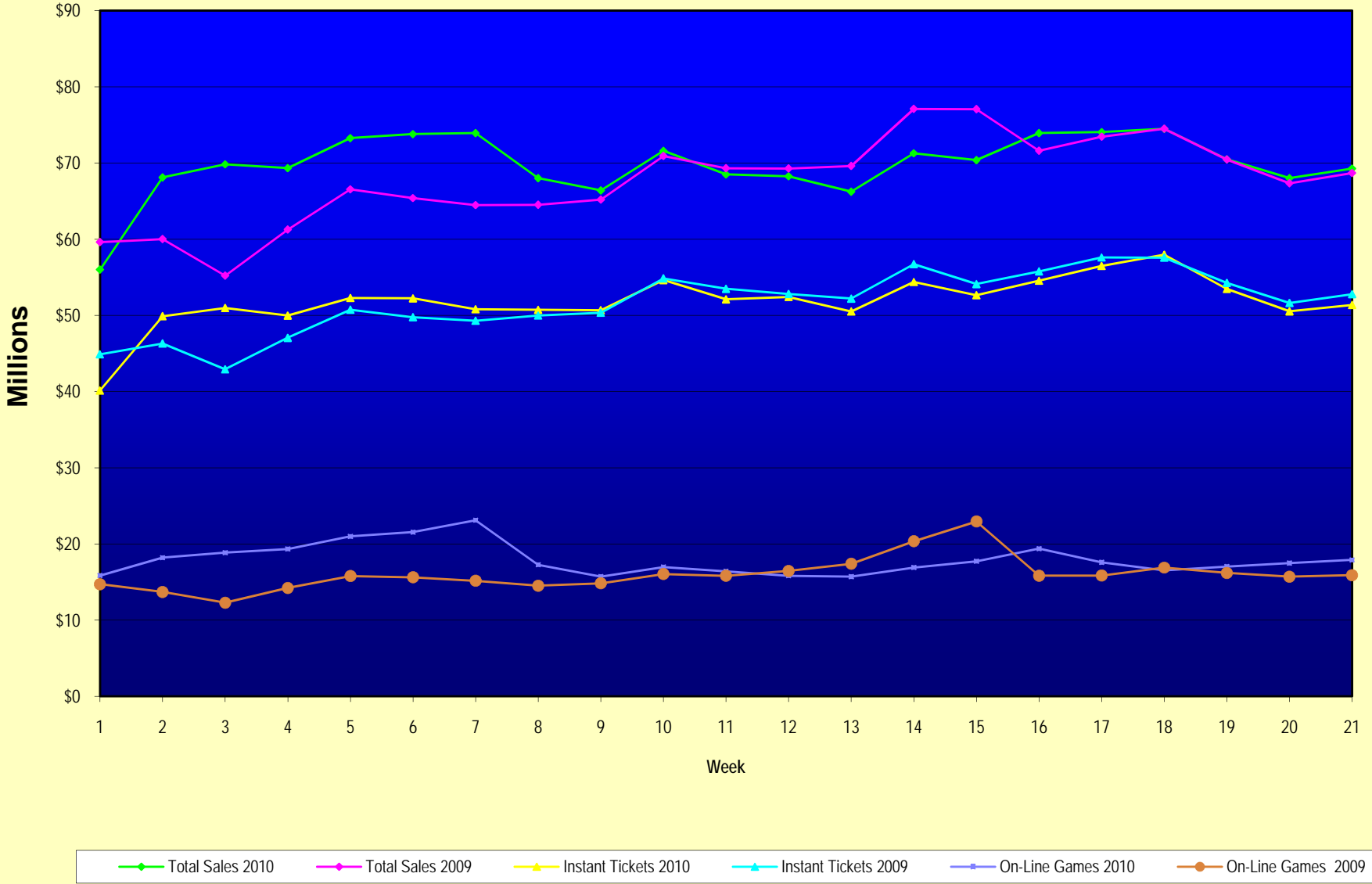
Note: Week 1 is not a full week of sales as this report is prepared on a Fiscal Year basis.

Texas Lottery Commission
Fiscal Year Over Year Change in Sales
Unaudited
FY 2010 Compared to FY 2009

Week	FY 2010 Week Ending	INSTANT TICKETS				ON-LINE GAMES				TOTAL SALES			
		FY 2010	FY 2009	Difference	% change - Cumulative Sales	FY 2010	FY 2009	Difference	% change - Cumulative Sales	FY 2010	FY 2009	Difference	% change - Cumulative Sales
43	6/26/2010		\$53,431,083				\$16,786,203				\$70,217,286		
44	7/3/2010		\$55,518,615				\$18,292,421				\$73,811,036		
45	7/10/2010		\$53,004,390				\$17,842,530				\$70,846,920		
46	7/17/2010		\$52,498,940				\$16,138,341				\$68,637,281		
47	7/24/2010		\$51,550,731				\$16,748,137				\$68,298,868		
48	7/31/2010		\$51,893,977				\$18,065,180				\$69,959,157		
49	8/7/2010		\$54,506,395				\$19,258,117				\$73,764,512		
50	8/14/2010		\$51,766,530				\$20,828,293				\$72,594,823		
51	8/21/2010		\$51,909,040				\$24,913,396				\$76,822,436		
52	8/28/2010		\$50,848,517				\$35,661,563				\$86,510,080		
53			\$13,288,367				\$3,085,816				\$16,374,183		
Total thru Current Week		\$1,088,803,843	\$1,085,115,558	\$3,688,285	0.3%	\$376,378,762	\$336,328,910	\$40,049,852	11.9%	\$1,465,182,605	\$1,421,444,468	\$43,738,137	3.1%
Fiscal Year Total		\$1,088,803,843	\$2,791,532,297			\$376,378,762	\$928,581,414			\$1,465,182,605	\$3,720,113,711		

** FY 2010 includes 5 days; FY 2009 includes 6 days

Texas Lottery Commission Fiscal Year Over Year Change in Sales



Note: Week 1 is not a full week of sales as this report is prepared on a Fiscal Year basis.

Texas Lottery Commission
Instant Tickets by Price Point
Sales, Prize Expense, Sales Contribution and Payout Percentage With Year Over Year Changes
Unaudited

Fiscal Year	Price Point	# of Active Games	FY Sales	% of Instant Ticket Sales	Year over Year Change in Sales	FY Prize Expense	Year over Year Change in Prize Expense	FY Sales Contribution	Year over Year Change in Contribution	Average Prize Payout %	Year over Year Change in Payout %
2009	\$1.00	36	96,545,934	8.9%		58,114,591		38,431,343		60.2%	0.2%
thru	\$2.00	32	186,572,473	17.2%		120,985,470		65,587,003		64.8%	-0.7%
1/24/2009	\$3.00	14	116,925,210	10.8%		76,863,468		40,061,742		65.7%	0.0%
	\$5.00	35	334,127,624	30.8%		227,249,339		106,878,285		68.0%	0.1%
	\$7.00	6	47,395,292	4.4%		32,234,998		15,160,294		68.0%	0.0%
	\$10.00	14	146,163,320	13.5%		102,294,274		43,869,046		70.0%	0.0%
	\$20.00	7	101,597,020	9.4%		72,917,876		28,679,144		71.8%	0.0%
	\$25.00	1	2,374,175	0.2%		1,726,852		647,323		72.7%	0.2%
	\$30.00	3	9,430,110	0.9%		6,833,730		2,596,380		72.5%	0.1%
	\$50.00	3	43,984,400	4.1%		31,797,439		12,186,961		72.3%	0.2%
Total		151	\$1,085,115,558			\$731,018,037		\$354,097,521		67.4%	-0.4%
2010	\$1.00	30	92,514,147	8.5%		55,685,749		36,828,398		60.2%	0.2%
thru	\$2.00	34	156,376,312	14.4%		103,236,860		53,139,452		66.0%	1.4%
1/23/2010	\$3.00	15	135,725,817	12.5%		89,237,607		46,488,210		65.7%	0.2%
	\$5.00	36	314,854,913	28.9%		213,906,106		100,948,807		67.9%	-0.1%
	\$7.00	5	43,011,864	4.0%		29,246,989		13,764,875		68.0%	0.0%
	\$10.00	13	160,395,830	14.7%		112,197,513		48,198,317		70.0%	0.0%
	\$20.00	5	157,669,060	14.5%		117,703,025		39,966,035		74.7%	2.1%
	\$25.00	0	-	0.0%		-		-		0.0%	-100.0%
	\$30.00	0	-	0.0%		-		-		0.0%	-100.0%
	\$50.00	2	28,255,900	2.6%		21,887,707		6,368,193		77.5%	3.9%
Total		140	\$1,088,803,843			\$743,101,557		\$345,702,286		68.2%	0.7%
Variance	\$1.00	-6	-4,031,787		-4.2%	-2,428,842	-4.2%	-1,602,945	-4.2%	0.00%	
2010 to	\$2.00	2	-30,196,161		-16.2%	-17,748,609	-14.7%	-12,447,552	-19.0%	1.17%	
2009	\$3.00	1	18,800,607		16.1%	12,374,140	16.1%	6,426,467	16.0%	0.01%	
	\$5.00	1	-19,272,711		-5.8%	-13,343,234	-5.9%	-5,929,477	-5.5%	-0.07%	
	\$7.00	-1	-4,383,428		-9.2%	-2,988,009	-9.3%	-1,395,419	-9.2%	-0.02%	
	\$10.00	-1	14,232,510		9.7%	9,903,239	9.7%	4,329,271	9.9%	-0.04%	
	\$20.00	-2	56,072,040		55.2%	44,785,149	61.4%	11,286,891	39.4%	2.88%	
	\$25.00	-1	-2,374,175		-100.0%	-1,726,852	-100.0%	-647,323	-100.0%	-72.73%	
	\$30.00	-3	-9,430,110		-100.0%	-6,833,730	-100.0%	-2,596,380	-100.0%	-72.47%	
	\$50.00	-1	-15,728,500		-35.8%	-9,909,732	-31.2%	-5,818,768	-47.7%	5.17%	
Total		-11	\$3,688,285		0.3%	\$12,083,516	1.7%	-\$8,395,234	-2.4%	0.88%	

Texas Lottery Commission
Instant Tickets by Price Point
Sales, Prize Expense, Sales Contribution and Payout Percentage With Year Over Year Changes
 Unaudited

Notes - Instant Ticket Variances

		FY 2010		FY 2009		Difference
Sales	\$1 - \$7		\$742,483,053		\$781,566,533	-\$39,083,480
Prize Exp.	\$1 - \$7		\$491,313,312		\$515,447,866	-\$24,134,554
Sales Cont.	\$1 - \$7		\$251,169,741		\$266,118,667	-\$14,948,926
Prize Exp. %	\$1 - \$7		66.2%		66.0%	0.2%
		FY 2010		FY 2009		Difference
Sales	\$10 - \$50		\$346,320,790		\$303,549,025	\$42,771,765
Prize Exp.	\$10 - \$50		\$251,788,245		\$215,570,172	\$36,218,073
Sales Cont.	\$10 - \$50		\$94,532,545		\$87,978,853	\$6,553,692
Prize Exp. %	\$10 - \$50		72.7%		71.0%	1.7%
		FY 2010		FY 2009		Difference
Sales	Instant		\$1,088,803,843		\$1,085,115,558	\$3,688,285
Prize Exp.	Instant		\$743,101,557		\$731,018,037	\$12,083,519
Sales Cont.	Instant		\$345,702,286		\$354,097,521	-\$8,395,234
Prize Exp. %	Instant		68.2%		67.4%	0.9%

		FY 2010		FY 2009		Difference
Sales	\$1 - \$10		\$902,878,883		\$927,729,853	-\$24,850,970
Prize Exp.	\$1 - \$10		\$603,510,825		\$617,742,140	-\$14,231,315
Sales Cont.	\$1 - \$10		\$299,368,058		\$309,987,713	-\$10,619,655
Prize Exp. %	\$1 - \$10		66.8%		66.6%	0.3%
		FY 2010		FY 2009		Difference
Sales	\$20 - \$50		\$185,924,960		\$157,385,705	\$28,539,255
Prize Exp.	\$20 - \$50		\$139,590,732		\$113,275,897	\$26,314,834
Sales Cont.	\$20 - \$50		\$46,334,228		\$44,109,808	\$2,224,421
Prize Exp. %	\$20 - \$50		75.1%		72.0%	3.1%
		FY 2010		FY 2009		Difference
Sales	Instant		\$1,088,803,843		\$1,085,115,558	\$3,688,285
Prize Exp.	Instant		\$743,101,557		\$731,018,037	\$12,083,519
Sales Cont.	Instant		\$345,702,286		\$354,097,521	-\$8,395,234
Prize Exp. %	Instant		68.2%		67.4%	0.9%

Texas Lottery Commission
Weekly Sales Summary
& Comparison to Previous Week
 Unaudited

	Week Ending 01/23/2010		Week Ending 01/16/2010			
	<u>THIS WEEK</u>	% of Sales	<u>LAST WEEK</u>	% of Sales	<u>\$ change</u>	<u>% change</u>
Total Sales	<u>\$69,280,579</u>		<u>\$68,013,977</u>		<u>\$1,266,602</u>	1.86%
Instant Tickets	<u>\$51,372,320</u>	74.2%	<u>\$50,524,929</u>	74.3%	<u>\$847,391</u>	1.68%
Lotto Texas	\$4,777,379	6.9%	\$4,695,322	6.9%	\$82,057	1.75%
Pick 3	\$5,022,300	7.2%	\$5,126,840	7.5%	-\$104,540	-2.04%
Pick 3 Sum It Up	\$95,487	0.1%	\$97,356	0.1%	-\$1,870	-1.92%
Cash 5	\$1,278,497	1.8%	\$1,291,866	1.9%	-\$13,369	-1.03%
Texas Two Step	\$781,017	1.1%	\$940,190	1.4%	-\$159,173	-16.93%
Mega Millions	\$4,024,412	5.8%	\$3,482,816	5.1%	\$541,596	15.55%
Megaplier	\$862,949	1.2%	\$785,670	1.2%	\$77,279	9.84%
Daily 4	\$977,063	1.4%	\$977,468	1.4%	-\$405	-0.04%
Daily 4 Sum It Up	\$89,156	0.1%	\$91,520	0.1%	-\$2,365	-2.58%
Total Online Sales	<u>\$17,908,259</u>		<u>\$17,489,048</u>		<u>\$419,211</u>	2.40%

* Totals may not sum due to rounding.

Texas Lottery Commission
Weekly Sales Summary
Unaudited

INSTANT TICKETS
TOP TEN SELLING GAMES

For the Week Ending : 01/23/2010

Rank	Price Point	Game	Sales (Millions)
1	\$ 20	\$500,000,000 BLOCKBUSTER	\$ 5.000
2	\$ 10	GOLD BAR BONANZA	\$ 3.737
3	\$ 5	\$50,000 CASH	\$ 3.153
4	\$ 5	CASINO ROYALE	\$ 2.293
5	\$ 10	SET FOR LIFE	\$ 1.781
6	\$ 3	BONUS CASHWORD	\$ 1.697
7	\$ 2	BREAK THE BANK	\$ 1.581
8	\$ 3	BONUS WORD CASHWORD	\$ 1.548
9	\$ 5	FIVE STAR CASH	\$ 1.506
10	\$ 3	TRIPLER	\$ 1.314

Texas Lottery Commission
Prize Payout Tracking Report
Unaudited

Through Week Ending 01/23/2010

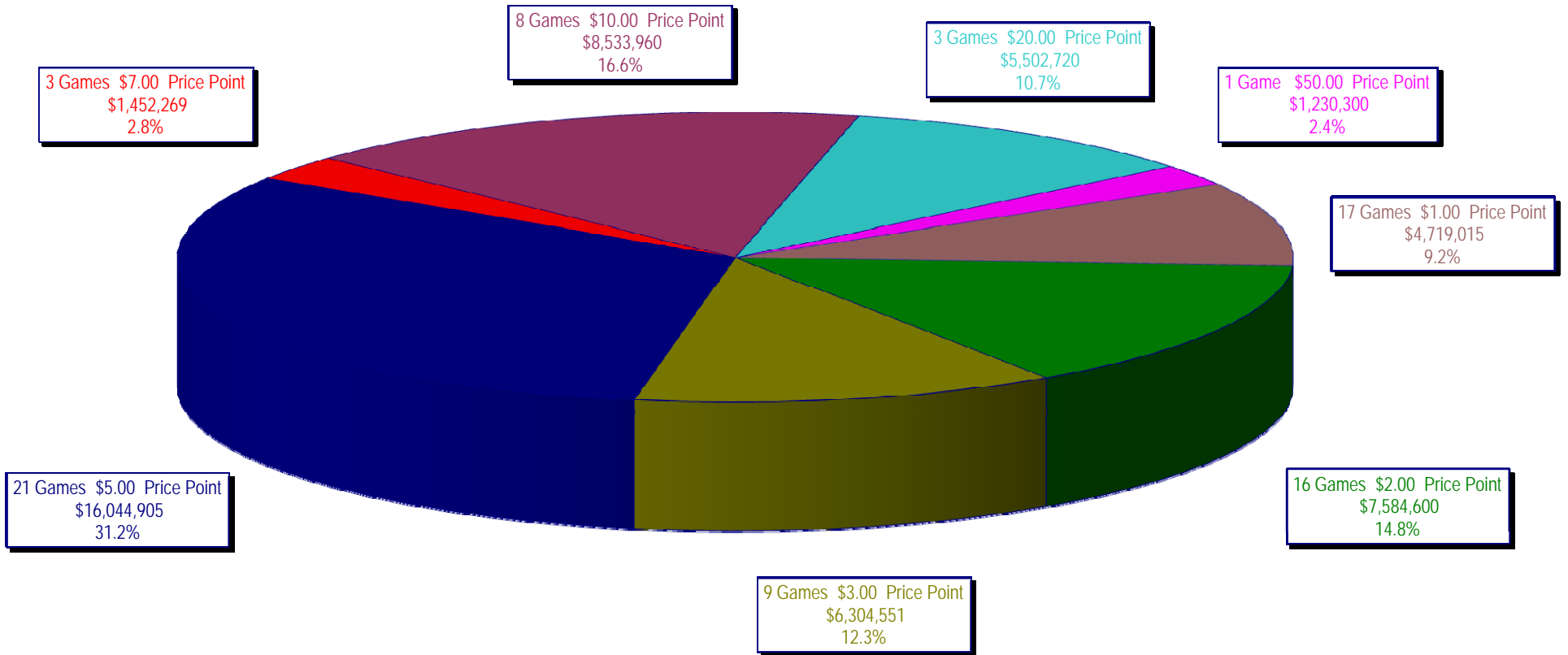
On-Line Sales

		FY Sales Through Week Ending 1/23/2010		FY Prize Expense Through Week Ending 1/23/2010	Actual* Prize Payout	Base Payout (Prize Pool)
Lotto	\$	107,707,671	\$	53,891,322	50.03%	50.00%
Pick 3		105,977,207		50,258,830	47.42%	50.00%
Pick 3 Sum It Up		2,102,901		956,725	45.50%	50.00%
Cash 5		26,743,954		14,337,009	53.61%	50.00%
Texas Two-Step		18,108,661		9,498,633	52.45%	50.00%
Mega Millions		76,198,235		38,149,591	50.07%	50.00%**
Megaplier		17,047,129		5,297,269	31.07%	N/A
Daily 4		20,523,920		9,790,600	47.70%	50.00%
Daily 4-Sum It Up		1,969,085		833,733	42.34%	50.00%
Totals	\$	376,378,762	\$	183,013,712	48.62%	

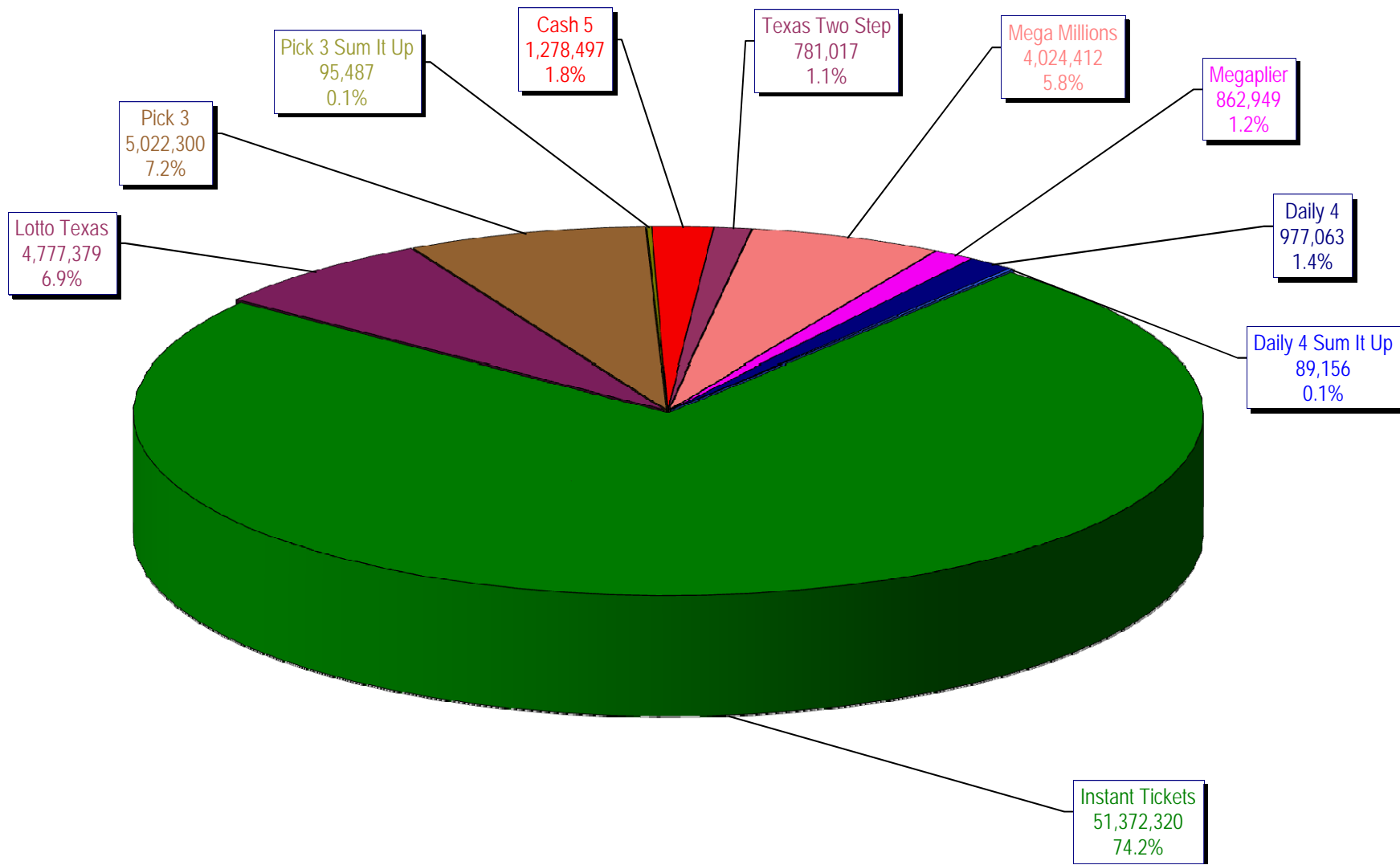
* Before Unclaimed Prizes

** Estimated; depends on # of guaranteed prizes won in Texas

Texas Lottery Commission
Instant Ticket Sales
For the Week Ending 01/23/2010
(Unaudited)



Texas Lottery Commission
All Game Sales
For the Week Ending 01/23/2010
(Unaudited)



Texas Lottery Commission - Weekly Sales Summary for FY 2010 (Unaudited)

Week Ended	Instant Games	New Games & Dates	Lotto Texas	Jackpot W	S	Pick 3	Pick 3 Sum It Up	Cash 5	Texas Two Step	Jackpot M	TH	Mega Millions	Jackpot T	F	Megaplier	Daily 4	Daily 4 Sum It Up	Total	Per Cap.
9/5/2009	53,436,608.00	1183 (\$2,N) - 08/31/09	6,294,287.00	45	47	5,276,229.00	104,886.00	1,338,093.00	1,212,330.00	1.2	200	2,959,401.00	12	12	708,622.00	955,411.00	95,751.00	72,381,618.00	2.98
9/12/2009	49,896,100.00	1200 (\$1,N); 1201 (\$10,N) - 09/07/09	6,426,945.00	49	51	5,109,927.50	104,641.00	1,278,982.00	771,782.00	225	200	2,811,431.00	18	28	693,407.00	918,268.00	90,931.50	68,102,415.00	2.80
9/19/2009	50,971,937.00	1202 (\$3,N); 1185 (\$5,N) - 09/14/09	6,496,645.00	53	55	5,176,010.00	103,700.00	1,295,302.00	803,124.00	200	225	3,164,844.00	38	51	760,088.00	965,671.50	94,237.00	69,831,558.50	2.87
9/26/2009	49,975,243.00	1141 (\$1,N); 1259 (\$3,N) - 09/21/09	6,765,369.00	57	59	4,894,237.50	98,171.00	1,271,129.00	915,249.00	275	400	3,568,088.00	62	75	822,408.00	918,596.00	92,187.50	69,320,678.00	2.85
10/3/2009	52,283,569.00	1203 (\$2,N); 1172 (\$5,N) - 09/28/09	7,003,107.00	61	63	5,156,873.00	102,841.50	1,315,863.00	1,111,913.00	525	650	4,270,019.00	88	105	939,935.00	993,158.50	97,984.50	73,275,263.50	3.01
10/10/2009	52,238,261.00	1205 (\$1,N); 1263 (\$3,N) - 10/05/09	7,061,948.00	64	67	5,050,571.00	102,586.50	1,300,852.00	811,464.00	200	225	5,100,350.00	122	145	1,050,507.00	971,147.50	98,012.50	73,785,699.50	3.03
10/17/2009	50,806,599.00	1187 (\$2,N); 1193 (\$20,N) - 10/12/09	7,262,683.00	70	73	4,990,457.00	99,389.50	1,276,305.00	769,253.00	200	200	6,449,660.00	170	200	1,245,391.00	931,084.00	90,371.00	73,921,192.50	3.04
10/24/2009	50,731,592.00	1188 (\$3,N); 1189 (\$5,N) - 10/19/09	5,785,292.00	76	4	4,845,815.00	93,256.00	1,282,033.00	806,971.00	225	275	2,776,628.00	12	18	663,491.00	931,641.00	89,284.00	68,006,003.00	2.80
10/31/2009	50,684,853.00	1192 (\$10,N); 1186 (\$1,N) - 10/26/09	3,749,006.00	5	6	4,944,409.00	98,542.50	1,289,523.00	815,750.00	375	200	2,988,991.00	28	40	717,574.00	1,006,435.00	100,489.50	66,395,573.00	2.73
11/7/2009	54,633,928.00	1191 (\$7,N) - 11/02/09	3,982,319.00	7	8	5,265,020.50	105,180.50	1,339,215.00	853,140.00	225	275	3,458,403.00	50	63	795,045.00	1,058,564.00	104,724.00	71,595,539.00	2.94
11/14/2009	52,109,218.00	1218 (\$2,N); 1184 (\$5,N) - 11/09/09	3,985,493.00	9	10	5,172,602.50	104,782.00	1,274,573.00	829,607.00	375	200	3,210,618.00	77	12	752,365.00	983,342.50	93,966.00	68,516,567.00	2.82
11/21/2009	52,427,881.00	0	3,943,958.00	11	12	5,123,802.00	104,705.00	1,255,026.00	797,796.00	225	275	2,834,318.00	17	27	687,221.00	990,042.00	92,693.00	68,257,442.00	2.81
11/28/2009	50,519,477.00	1206 (\$1,N); 1190 (\$5,N); 1264 (\$1,N) - 11/23/09	3,966,034.00	13	14	5,043,210.00	102,783.50	1,202,798.00	693,774.00	200	225	2,932,809.00	37	47	691,194.00	985,336.50	92,508.00	66,229,924.00	2.72
12/5/2009	54,376,448.00	0	4,004,632.00	15	16	5,393,458.00	111,441.50	1,288,282.00	873,210.00	250	350	3,297,486.00	57	69	773,136.00	1,063,424.00	100,271.00	71,281,788.50	2.93
12/12/2009	52,654,632.00	1159 (\$2,N); 1182 (\$5,N) - 12/07/09 1196 (\$5,N) - 12/09/09	4,105,013.00	17	18	5,091,389.00	102,613.50	1,294,933.00	1,075,732.00	475	600	4,054,401.00	83	100	874,842.00	1,030,471.50	97,299.50	70,381,326.50	2.89
12/19/2009	54,542,793.00	1207 (\$1,N); 1208 (\$3,N) - 12/14/09	4,355,440.00	20	21	5,115,559.00	100,562.50	1,293,347.00	1,288,820.00	750	925	5,052,350.00	118	140	1,028,695.00	1,046,577.50	98,399.50	73,922,543.50	3.04
12/26/2009	56,482,042.00	1209 (\$2,N); 1168 (\$5,N) - 12/21/09	4,400,669.00	22	24	4,950,247.50	92,929.50	1,243,523.00	767,273.00	200	200	4,188,741.00	162	12	866,559.00	982,220.50	90,616.50	74,064,821.00	3.04
1/2/2010	57,952,304.00	0	4,605,833.00	26	27	5,021,566.50	97,500.50	1,319,224.00	889,422.00	225	275	2,825,733.00	16	27	676,790.00	1,012,922.00	93,894.00	74,495,189.00	3.06
1/9/2010	53,471,476.00	1210 (1,N); 1211 (\$10,N) - 01/04/10	4,579,485.00	29	31	5,094,846.00	97,216.00	1,297,994.00	1,024,853.00	375	525	3,114,965.00	37	48	735,440.00	989,636.00	91,180.50	70,497,091.50	2.90
1/16/2010	50,524,929.00	1169 (\$1,N); 1212 (\$5,N) - 01/11/10	4,695,322.00	32	33	5,126,839.50	97,356.00	1,291,866.00	940,190.00	200	200	3,482,816.00	60	73	785,670.00	977,468.00	91,520.00	68,013,976.50	2.80
1/23/2010	51,372,320.00	1195 (\$2,N) - 01/18/10 1198 (\$2,N); 1164 (\$5,N) - 01/21/10	4,777,379.05	35	36	5,022,299.50	95,486.50	1,278,497.00	781,017.00	200	225	4,024,412.00	86	105	862,949.00	977,063.00	89,155.50	69,280,578.55	2.85
weekly change	1.68%		1.75%			-2.04%	-1.92%	-1.03%	-16.93%			15.55%			9.84%	-0.04%	-2.58%	1.86%	
	SALES		SALES			SALES	SALES	SALES	SALES			SALES			SALES	SALES	SALES	SALES	% of Sales
Startup to date	37,360,922,142.00		10,587,321,218.05			3,689,574,964.50	14,503,976.50	2,216,648,094.00	495,896,592.00			1,217,728,834.45			282,615,416.00	109,574,130.50	15,722,911.50	56,198,642,251.50	100.0%
Calendar Year to date	171,905,491.00		16,010,967.05			16,889,399.50	129,025.00	4,263,138.00	2,812,276.00			11,581,377.00			2,615,187.00	3,269,569.50	302,218.50	229,778,648.55	100.0%
Fiscal Year to date 2010	1,088,803,843.00		107,707,671.05			105,977,207.00	2,102,901.00	26,743,954.00	18,108,661.00			76,198,235.00			17,047,129.00	20,523,919.50	1,969,084.50	1,465,182,605.05	100.0%