



WEEKLY SALES SUMMARY

Unaudited

[Week Ending: 02/06/2010](#)

Texas Lottery Commission
Fiscal Year to Date Sales Comparison
Unaudited

Through the week ending 02/06/2010 (23 weeks)

Sales by Game	FY 2008 *	FY 2009 **	FY 2010	\$ Change		% Change	
				FY 2010 to FY 2008	FY 2010 to FY 2009 to	FY 2010 to FY 2008	FY 2010 to FY 2009
Instants	\$ 1,249,197,882	\$ 1,202,816,740	\$ 1,202,335,315	\$ -46,862,567	\$ -481,425	-3.8%	0.0%
Lotto Texas	94,475,628	80,974,726	117,437,371	22,961,743	36,462,645	24.3%	45.0%
Pick 3	126,076,743	123,721,756	116,633,411	-9,443,333	-7,088,345	-7.5%	-5.7%
Pick 3 Sum It Up	2,425,856	2,617,296	2,308,872	-116,984	-308,425	-4.8%	-11.8%
Cash 5	34,287,146	31,278,499	29,369,613	-4,917,533	-1,908,886	-14.3%	-6.1%
Texas Two Step	18,125,901	20,129,937	19,673,321	1,547,420	-456,616	8.5%	-2.3%
Mega Millions	67,217,725	73,942,848	83,652,015	16,434,290	9,709,168	24.4%	13.1%
Megaplier	16,545,947	17,625,478	18,662,315	2,116,368	1,036,837	12.8%	5.9%
Daily 4	18,348,233	18,911,123	22,586,999	4,238,767	3,675,877	23.1%	19.4%
Daily 4 Sum It Up	4,534,517	2,389,834	2,157,412	-2,377,105	-232,423	-52.4%	-9.7%
Powerball	-	-	2,649,068	2,649,068	2,649,068	-	-
Powerplay	-	-	537,205	537,205	537,205	-	-
Total	\$ 1,631,235,577	\$ 1,574,408,236	\$ 1,618,002,916	\$ -13,232,661	\$ 43,594,680	-0.8%	2.8%

* 3 extra days ** 1 extra day

Texas Lottery Commission
 Fiscal Year to Date Cumulative Average Sales Comparison
 Unaudited

Through the week ending 02/06/2010 (23 weeks)

Sales by Game	FY 2008	FY 2009	FY 2010
Instant	\$ 7,711,098	\$ 7,517,605	\$ 7,561,857
Lotto Texas	583,183	506,092	738,600
Pick 3	778,252	773,261	733,543
Pick 3 Sum It Up	14,974	16,358	14,521
Cash 5	211,649	195,491	184,715
Texas Two Step	111,888	125,812	123,732
Mega Millions	414,924	462,143	526,113
Megaplier	102,135	110,159	117,373
Daily 4	113,261	118,195	142,057
Daily 4 Sum It Up	27,991	14,936	13,569
Powerball	-	-	378,438 *
Powerplay	-	-	76,744 *
Total	\$ 10,069,355	\$ 9,840,051	\$ 10,611,261
	thru 02/09/2008 162 days	thru 02/07/2009 160 days	thru 02/06/2010 159 days * 7 days

Texas Lottery Commission
Fiscal Year Over Year Change in Sales
Unaudited
FY 2010 Compared to FY 2009

Week	FY 2010 Week Ending	INSTANT TICKETS				ON-LINE GAMES				TOTAL SALES			
		FY 2010	FY 2009	Difference	% change - Cumulative Sales	FY 2010	FY 2009	Difference	% change - Cumulative Sales	FY 2010	FY 2009	Difference	% change - Cumulative Sales
1	9/5/2009**	\$40,148,241	\$44,890,104	(\$4,741,863)	-10.6%	\$15,859,194	\$14,722,011	\$1,137,184	7.7%	\$56,007,435	\$59,612,115	(\$3,604,680)	-6.0%
2	9/12/2009	\$49,896,100	\$46,309,551	\$3,586,549	7.7%	\$18,206,315	\$13,704,860	\$4,501,455	32.8%	\$68,102,415	\$60,014,411	\$8,088,004	13.5%
3	9/19/2009	\$50,971,937	\$42,923,171	\$8,048,766	18.8%	\$18,859,622	\$12,291,263	\$6,568,359	53.4%	\$69,831,559	\$55,214,434	\$14,617,125	26.5%
4	9/26/2009	\$49,975,243	\$47,042,801	\$2,932,442	6.2%	\$19,345,435	\$14,222,339	\$5,123,096	36.0%	\$69,320,678	\$61,265,140	\$8,055,538	13.1%
5	10/3/2009	\$52,283,569	\$50,747,162	\$1,536,407	3.0%	\$20,991,695	\$15,784,472	\$5,207,223	33.0%	\$73,275,264	\$66,531,634	\$6,743,630	10.1%
6	10/10/2009	\$52,238,261	\$49,763,789	\$2,474,472	5.0%	\$21,547,439	\$15,622,498	\$5,924,941	37.9%	\$73,785,700	\$65,386,287	\$8,399,413	12.8%
7	10/17/2009	\$50,806,599	\$49,299,053	\$1,507,546	3.1%	\$23,114,594	\$15,167,940	\$7,946,654	52.4%	\$73,921,193	\$64,466,993	\$9,454,200	14.7%
8	10/24/2009	\$50,731,592	\$49,977,581	\$754,011	1.5%	\$17,274,411	\$14,525,843	\$2,748,568	18.9%	\$68,006,003	\$64,503,424	\$3,502,579	5.4%
9	10/31/2009	\$50,684,853	\$50,346,542	\$338,311	0.7%	\$15,710,720	\$14,838,845	\$871,876	5.9%	\$66,395,573	\$65,185,387	\$1,210,187	1.9%
10	11/7/2009	\$54,633,928	\$54,860,087	(\$226,159)	-0.4%	\$16,961,611	\$16,057,069	\$904,542	5.6%	\$71,595,539	\$70,917,156	\$678,383	1.0%
11	11/14/2009	\$52,109,218	\$53,484,812	(\$1,375,594)	-2.6%	\$16,407,349	\$15,829,819	\$577,530	3.6%	\$68,516,567	\$69,314,631	(\$798,064)	-1.2%
12	11/21/2009	\$52,427,881	\$52,806,511	(\$378,630)	-0.7%	\$15,829,561	\$16,460,748	(\$631,187)	-3.8%	\$68,257,442	\$69,267,259	(\$1,009,817)	-1.5%
13	11/28/2009	\$50,519,477	\$52,199,741	(\$1,680,264)	-3.2%	\$15,710,447	\$17,397,576	(\$1,687,129)	-9.7%	\$66,229,924	\$69,597,317	(\$3,367,393)	-4.8%
14	12/5/2009	\$54,376,448	\$56,731,851	(\$2,355,403)	-4.2%	\$16,905,341	\$20,363,789	(\$3,458,449)	-17.0%	\$71,281,789	\$77,095,640	(\$5,813,852)	-7.5%
15	12/12/2009	\$52,654,632	\$54,109,617	(\$1,454,985)	-2.7%	\$17,726,695	\$22,952,228	(\$5,225,533)	-22.8%	\$70,381,327	\$77,061,845	(\$6,680,518)	-8.7%
16	12/19/2009	\$54,542,793	\$55,777,328	(\$1,234,535)	-2.2%	\$19,379,751	\$15,833,517	\$3,546,234	22.4%	\$73,922,544	\$71,610,845	\$2,311,699	3.2%
17	12/26/2009	\$56,482,042	\$57,597,885	(\$1,115,843)	-1.9%	\$17,582,779	\$15,851,771	\$1,731,009	10.9%	\$74,064,821	\$73,449,656	\$615,166	0.8%
18	1/2/2010	\$57,952,304	\$57,582,115	\$370,189	0.6%	\$16,542,885	\$16,900,028	(\$357,143)	-2.1%	\$74,495,189	\$74,482,143	\$13,047	0.0%
19	1/9/2010	\$53,471,476	\$54,250,945	(\$779,469)	-1.4%	\$17,025,616	\$16,203,220	\$822,396	5.1%	\$70,497,092	\$70,454,165	\$42,927	0.1%
20	1/16/2010	\$50,524,929	\$51,625,339	(\$1,100,410)	-2.1%	\$17,489,048	\$15,701,605	\$1,787,443	11.4%	\$68,013,977	\$67,326,944	\$687,033	1.0%
21	1/23/2010	\$51,372,320	\$52,789,573	(\$1,417,253)	-2.7%	\$17,908,259	\$15,897,473	\$2,010,786	12.6%	\$69,280,579	\$68,687,046	\$593,533	0.9%
22	1/30/2010	\$51,826,337	\$55,453,471	(\$3,627,134)	-6.5%	\$19,026,658	\$16,908,272	\$2,118,386	12.5%	\$70,852,995	\$72,361,743	(\$1,508,749)	-2.1%
23	2/6/2010	\$61,705,135	\$62,247,711	(\$542,576)	-0.9%	\$20,262,181	\$18,354,314	\$1,907,868	10.4%	\$81,967,316	\$80,602,025	\$1,365,292	1.7%
24	2/13/2010		\$60,509,056				\$19,218,078				\$79,727,134		
25	2/20/2010		\$59,194,623				\$21,098,199				\$80,292,822		
26	2/27/2010		\$58,857,216				\$24,116,924				\$82,974,140		
27	3/6/2010		\$59,552,257				\$23,995,136				\$83,547,393		
28	3/13/2010		\$53,754,084				\$18,769,831				\$72,523,915		
29	3/20/2010		\$52,581,107				\$15,903,038				\$68,484,145		
30	3/27/2010		\$52,560,961				\$16,094,933				\$68,655,894		
31	4/3/2010		\$56,249,759				\$17,357,002				\$73,606,761		
32	4/10/2010		\$54,440,987				\$17,660,600				\$72,101,587		
33	4/17/2010		\$52,755,834				\$18,469,585				\$71,225,419		
34	4/24/2010		\$51,450,968				\$20,216,898				\$71,667,866		
35	5/1/2010		\$52,327,090				\$23,520,573				\$75,847,663		
36	5/8/2010		\$53,214,412				\$16,241,207				\$69,455,619		
37	5/15/2010		\$50,785,227				\$15,990,544				\$66,775,771		
38	5/22/2010		\$56,567,077				\$15,874,447				\$72,441,524		
39	5/29/2010		\$55,359,239				\$16,040,196				\$71,399,435		
40	6/5/2010		\$60,250,125				\$16,301,599				\$76,551,724		
41	6/12/2010		\$54,979,517				\$16,143,215				\$71,122,732		
42	6/19/2010		\$53,109,433				\$16,357,924				\$69,467,357		

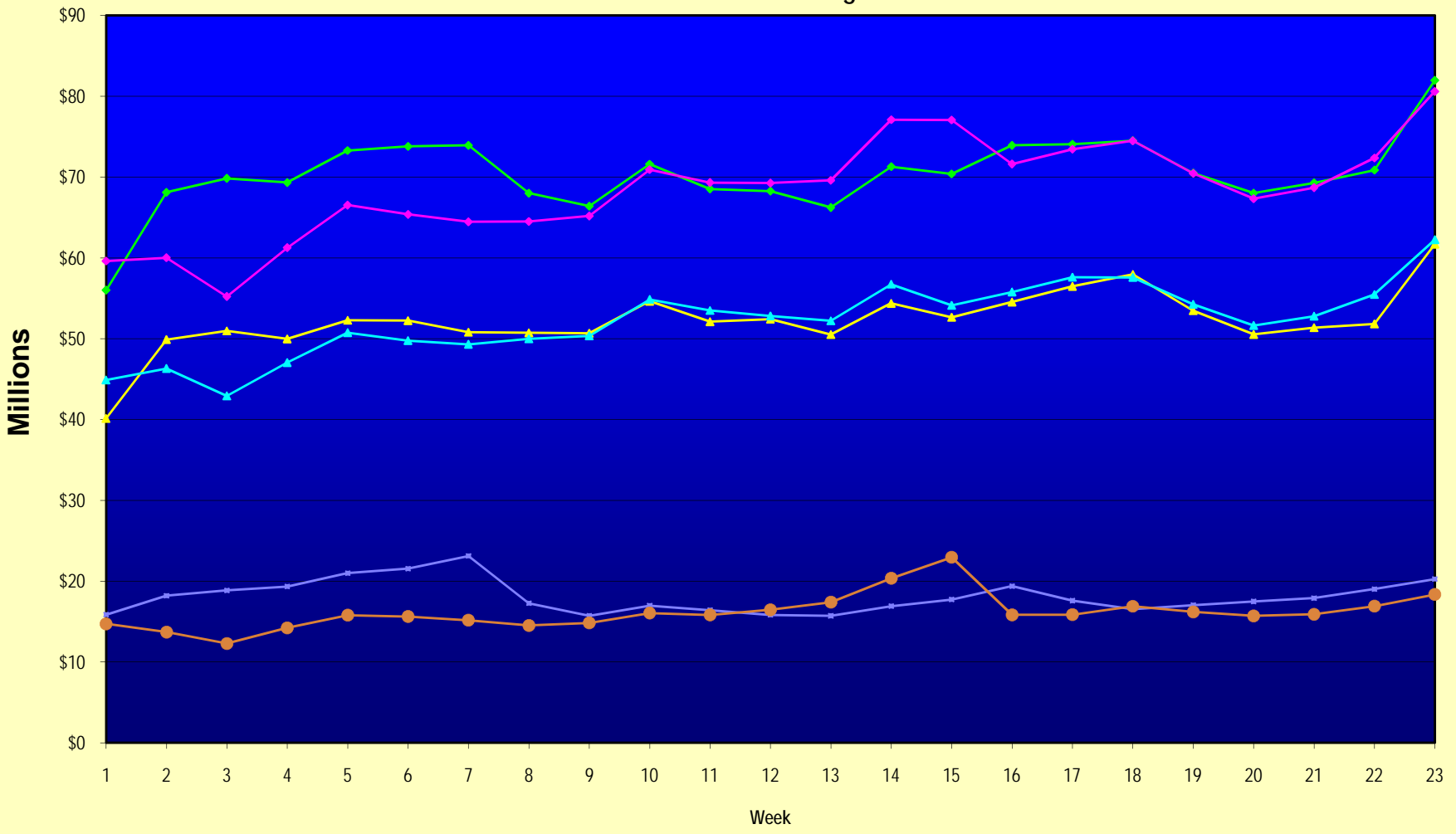
Note: Week 1 is not a full week of sales as this report is prepared on a Fiscal Year basis.

Texas Lottery Commission
Fiscal Year Over Year Change in Sales
Unaudited
FY 2010 Compared to FY 2009

Week	FY 2010 Week Ending	INSTANT TICKETS				ON-LINE GAMES				TOTAL SALES			
		FY 2010	FY 2009	Difference	% change - Cumulative Sales	FY 2010	FY 2009	Difference	% change - Cumulative Sales	FY 2010	FY 2009	Difference	% change - Cumulative Sales
43	6/26/2010		\$53,431,083				\$16,786,203				\$70,217,286		
44	7/3/2010		\$55,518,615				\$18,292,421				\$73,811,036		
45	7/10/2010		\$53,004,390				\$17,842,530				\$70,846,920		
46	7/17/2010		\$52,498,940				\$16,138,341				\$68,637,281		
47	7/24/2010		\$51,550,731				\$16,748,137				\$68,298,868		
48	7/31/2010		\$51,893,977				\$18,065,180				\$69,959,157		
49	8/7/2010		\$54,506,395				\$19,258,117				\$73,764,512		
50	8/14/2010		\$51,766,530				\$20,828,293				\$72,594,823		
51	8/21/2010		\$51,909,040				\$24,913,396				\$76,822,436		
52	8/28/2010		\$50,848,517				\$35,661,563				\$86,510,080		
53			\$13,288,367				\$3,085,816				\$16,374,183		
Total thru Current Week		\$1,202,335,315	\$1,202,816,740	(\$481,425)	0.0%	\$415,667,601	\$371,591,496	\$44,076,105	11.9%	\$1,618,002,916	\$1,574,408,236	\$43,594,680	2.8%
Fiscal Year Total		\$1,202,335,315	\$2,791,532,297			\$415,667,601	\$928,581,414			\$1,618,002,916	\$3,720,113,711		

** FY 2010 includes 5 days; FY 2009 includes 6 days

Texas Lottery Commission Fiscal Year Over Year Change in Sales



◆ Total Sales 2010
 ◆ Total Sales 2009
 ▲ Instant Tickets 2010
 ▲ Instant Tickets 2009
 ◆ On-Line Games 2010
 ● On-Line Games 2009

Note: Week 1 is not a full week of sales as this report is prepared on a Fiscal Year basis.

Texas Lottery Commission
Instant Tickets by Price Point
Sales, Prize Expense, Sales Contribution and Payout Percentage With Year Over Year Changes
Unaudited

Fiscal Year	Price Point	# of Active Games	FY Sales	% of Instant Ticket Sales	Year over Year Change in Sales	FY Prize Expense	Year over Year Change in Prize Expense	FY Sales Contribution	Year over Year Change in Contribution	Average Prize Payout %	Year over Year Change in Payout %
2009	\$1.00	37	107,429,231	8.9%		64,629,115		42,800,116		60.2%	0.1%
thru	\$2.00	33	208,073,381	17.3%		135,361,289		72,712,092		65.1%	-0.3%
2/7/2009	\$3.00	14	128,743,266	10.7%		84,629,956		44,113,310		65.7%	0.0%
	\$5.00	37	371,777,734	30.9%		252,853,002		118,924,732		68.0%	0.1%
	\$7.00	6	52,019,163	4.3%		35,378,574		16,640,589		68.0%	0.0%
	\$10.00	15	161,590,880	13.4%		113,087,058		48,503,822		70.0%	0.0%
	\$20.00	7	112,969,040	9.4%		81,075,042		31,893,998		71.8%	0.0%
	\$25.00	1	2,373,975	0.2%		1,726,707		647,268		72.7%	0.2%
	\$30.00	3	9,808,620	0.8%		7,107,793		2,700,827		72.5%	0.1%
	\$50.00	3	48,031,450	4.0%		34,721,176		13,310,274		72.3%	0.2%
Total		156	\$1,202,816,740			\$810,569,712		\$392,247,028		67.4%	-0.4%
2010	\$1.00	31	103,548,238	8.6%		62,237,153		41,311,085		60.1%	0.0%
thru	\$2.00	34	171,846,400	14.3%		113,298,627		58,547,773		65.9%	1.2%
2/6/2010	\$3.00	15	149,166,582	12.4%		98,073,088		51,093,494		65.7%	0.2%
	\$5.00	36	347,003,873	28.9%		235,756,517		111,247,356		67.9%	-0.1%
	\$7.00	6	50,335,852	4.2%		34,226,114		16,109,738		68.0%	0.0%
	\$10.00	13	176,948,840	14.7%		123,774,532		53,174,308		69.9%	0.0%
	\$20.00	6	172,432,780	14.3%		128,642,397		43,790,383		74.6%	2.0%
	\$25.00	0	-	0.0%		-		-		0.0%	-100.0%
	\$30.00	0	-	0.0%		-		-		0.0%	-100.0%
	\$50.00	2	31,052,750	2.6%		24,060,089		6,992,661		77.5%	3.9%
Total		143	\$1,202,335,315			\$820,068,517		\$382,266,798		68.2%	0.7%
Variance	\$1.00	-6	-3,880,993		-3.6%	-2,391,962	-3.7%	-1,489,031	-3.5%	-0.06%	
2010 to	\$2.00	1	-36,226,981		-17.4%	-22,062,662	-16.3%	-14,164,319	-19.5%	0.88%	
2009	\$3.00	1	20,423,316		15.9%	13,443,132	15.9%	6,980,184	15.8%	0.01%	
	\$5.00	-1	-24,773,861		-6.7%	-17,096,485	-6.8%	-7,677,376	-6.5%	-0.07%	
	\$7.00	0	-1,683,311		-3.2%	-1,152,460	-3.3%	-530,851	-3.2%	-0.02%	
	\$10.00	-2	15,357,960		9.5%	10,687,474	9.5%	4,670,486	9.6%	-0.03%	
	\$20.00	-1	59,463,740		52.6%	47,567,355	58.7%	11,896,385	37.3%	2.84%	
	\$25.00	-1	-2,373,975		-100.0%	-1,726,707	-100.0%	-647,268	-100.0%	-72.73%	
	\$30.00	-3	-9,808,620		-100.0%	-7,107,793	-100.0%	-2,700,827	-100.0%	-72.46%	
	\$50.00	-1	-16,978,700		-35.3%	-10,661,087	-30.7%	-6,317,613	-47.5%	5.19%	
Total		-13	-\$481,425		0.0%	\$9,498,805	1.2%	-\$9,980,230	-2.5%	0.82%	

Texas Lottery Commission
Instant Tickets by Price Point
Sales, Prize Expense, Sales Contribution and Payout Percentage With Year Over Year Changes
 Unaudited

Notes - Instant Ticket Variances

		FY 2010		FY 2009		Difference
Sales	\$1 - \$7		\$821,900,945		\$868,042,775	-\$46,141,830
Prize Exp.	\$1 - \$7		\$543,591,499		\$572,851,936	-\$29,260,437
Sales Cont.	\$1 - \$7		\$278,309,446		\$295,190,839	-\$16,881,393
Prize Exp. %	\$1 - \$7		66.1%		66.0%	0.1%
		FY 2010		FY 2009		Difference
Sales	\$10 - \$50		\$380,434,370		\$334,773,965	\$45,660,405
Prize Exp.	\$10 - \$50		\$276,477,018		\$237,717,776	\$38,759,242
Sales Cont.	\$10 - \$50		\$103,957,352		\$97,056,189	\$6,901,163
Prize Exp. %	\$10 - \$50		72.7%		71.0%	1.7%
		FY 2010		FY 2009		Difference
Sales	Instant		\$1,202,335,315		\$1,202,816,740	-\$481,425
Prize Exp.	Instant		\$820,068,517		\$810,569,712	\$9,498,805
Sales Cont.	Instant		\$382,266,798		\$392,247,028	-\$9,980,230
Prize Exp. %	Instant		68.2%		67.4%	0.8%

		FY 2010		FY 2009		Difference
Sales	\$1 - \$10		\$998,849,785		\$1,029,633,655	-\$30,783,870
Prize Exp.	\$1 - \$10		\$667,366,031		\$685,938,994	-\$18,572,963
Sales Cont.	\$1 - \$10		\$331,483,754		\$343,694,661	-\$12,210,907
Prize Exp. %	\$1 - \$10		66.8%		66.6%	0.2%
		FY 2010		FY 2009		Difference
Sales	\$20 - \$50		\$203,485,530		\$173,183,085	\$30,302,445
Prize Exp.	\$20 - \$50		\$152,702,486		\$124,630,718	\$28,071,768
Sales Cont.	\$20 - \$50		\$50,783,044		\$48,552,367	\$2,230,677
Prize Exp. %	\$20 - \$50		75.0%		72.0%	3.1%
		FY 2010		FY 2009		Difference
Sales	Instant		\$1,202,335,315		\$1,202,816,740	-\$481,425
Prize Exp.	Instant		\$820,068,517		\$810,569,712	\$9,498,805
Sales Cont.	Instant		\$382,266,798		\$392,247,028	-\$9,980,230
Prize Exp. %	Instant		68.2%		67.4%	0.8%

Texas Lottery Commission
Weekly Sales Summary
& Comparison to Previous Week
 Unaudited

	Week Ending 02/06/2010		Week Ending 01/30/2010			
	<u>THIS WEEK</u>	% of Sales	<u>LAST WEEK</u>	% of Sales	<u>\$ change</u>	<u>% change</u>
Total Sales	<u>\$81,967,316</u>		<u>\$70,852,995</u>		<u>\$11,114,322</u>	15.69%
Instant Tickets	<u>\$61,705,135</u>	75.3%	<u>\$51,826,337</u>	73.1%	<u>\$9,878,798</u>	19.06%
Lotto Texas	\$4,881,934	6.0%	\$4,847,766	6.8%	\$34,168	0.70%
Pick 3	\$5,542,132	6.8%	\$5,114,072	7.2%	\$428,060	8.37%
Pick 3 Sum It Up	\$107,343	0.1%	\$98,628	0.1%	\$8,715	8.84%
Cash 5	\$1,338,894	1.6%	\$1,286,765	1.8%	\$52,129	4.05%
Texas Two Step	\$772,320	0.9%	\$792,340	1.1%	-\$20,020	-2.53%
Mega Millions	\$2,650,100	3.2%	\$4,803,680	6.8%	-\$2,153,580	-44.83%
Megaplier	\$628,992	0.8%	\$986,194	1.4%	-\$357,202	-36.22%
Daily 4	\$1,056,980	1.3%	\$1,006,100	1.4%	\$50,881	5.06%
Daily 4 Sum It Up	\$97,214	0.1%	\$91,113	0.1%	\$6,101	6.70%
Powerball	\$2,649,068	3.2%	\$0	0.0%	\$2,649,068	-
Powerplay	\$537,205	0.7%	\$0	0.0%	\$537,205	-
Total Online Sales	<u>\$20,262,181</u>		<u>\$19,026,658</u>		<u>\$1,235,524</u>	6.49%

* Totals may not sum due to rounding.

Texas Lottery Commission
Weekly Sales Summary
Unaudited

INSTANT TICKETS
TOP TEN SELLING GAMES

For the Week Ending : 02/06/2010

Rank	Price Point	Game	Sales (Millions)
1	\$ 20	\$500,000,000 BLOCKBUSTER	\$ 5.149
2	\$ 20	\$1,000,000 GOLD RUSH	\$ 3.967
3	\$ 10	GOLD BAR BONANZA	\$ 3.731
4	\$ 7	PRECIOUS PEARL 7S	\$ 2.947
5	\$ 5	\$50,000 CASH	\$ 2.913
6	\$ 5	CASINO ROYALE	\$ 2.502
7	\$ 10	SET FOR LIFE	\$ 2.101
8	\$ 3	BONUS CASHWORD	\$ 1.987
9	\$ 3	BONUS WORD CASHWORD	\$ 1.823
10	\$ 2	BREAK THE BANK	\$ 1.800

Texas Lottery Commission
Prize Payout Tracking Report
Unaudited

Through Week Ending 02/06/2010

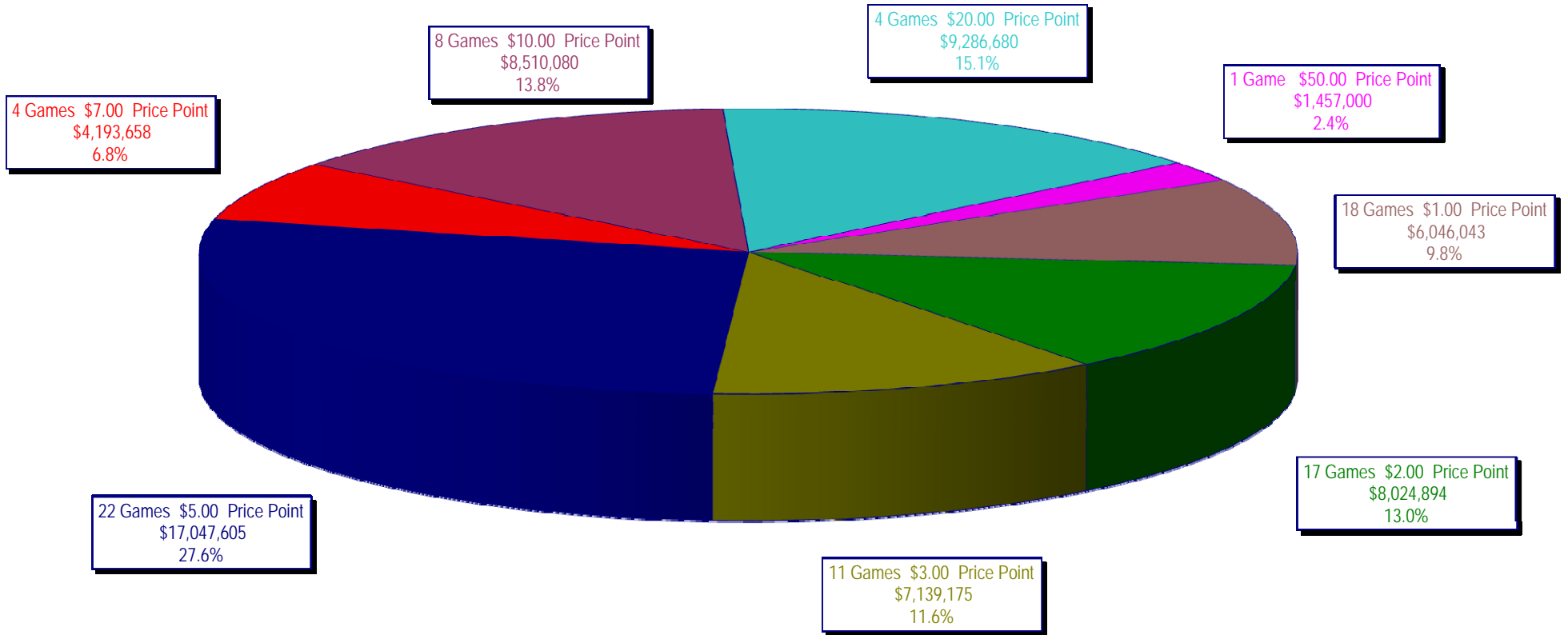
On-Line Sales

		FY Sales Through Week Ending 2/6/2010		FY Prize Expense Through Week Ending 2/6/2010	Actual* Prize Payout	Base Payout (Prize Pool)
Lotto	\$	117,437,371	\$	58,757,321	50.03%	50.00%
Pick 3		116,633,411		54,670,520	46.87%	50.00%
Pick 3 Sum It Up		2,308,872		1,034,890	44.82%	50.00%
Cash 5		29,369,613		15,649,958	53.29%	50.00%
Texas Two-Step		19,673,321		10,313,043	52.42%	50.00%
Mega Millions		83,652,015		42,009,847	50.22%	50.00%**
Megaplier		18,662,315		6,639,274	35.58%	N/A
Daily 4		22,586,999		10,701,600	47.38%	50.00%
Daily 4-Sum It Up		2,157,412		896,741	41.57%	50.00%
Powerball		2,649,068		830,883	31.37%	50.00%
Powerplay		537,205		85,684	15.95%	50.00%
Totals	\$	415,667,601	\$	201,589,762	48.50%	

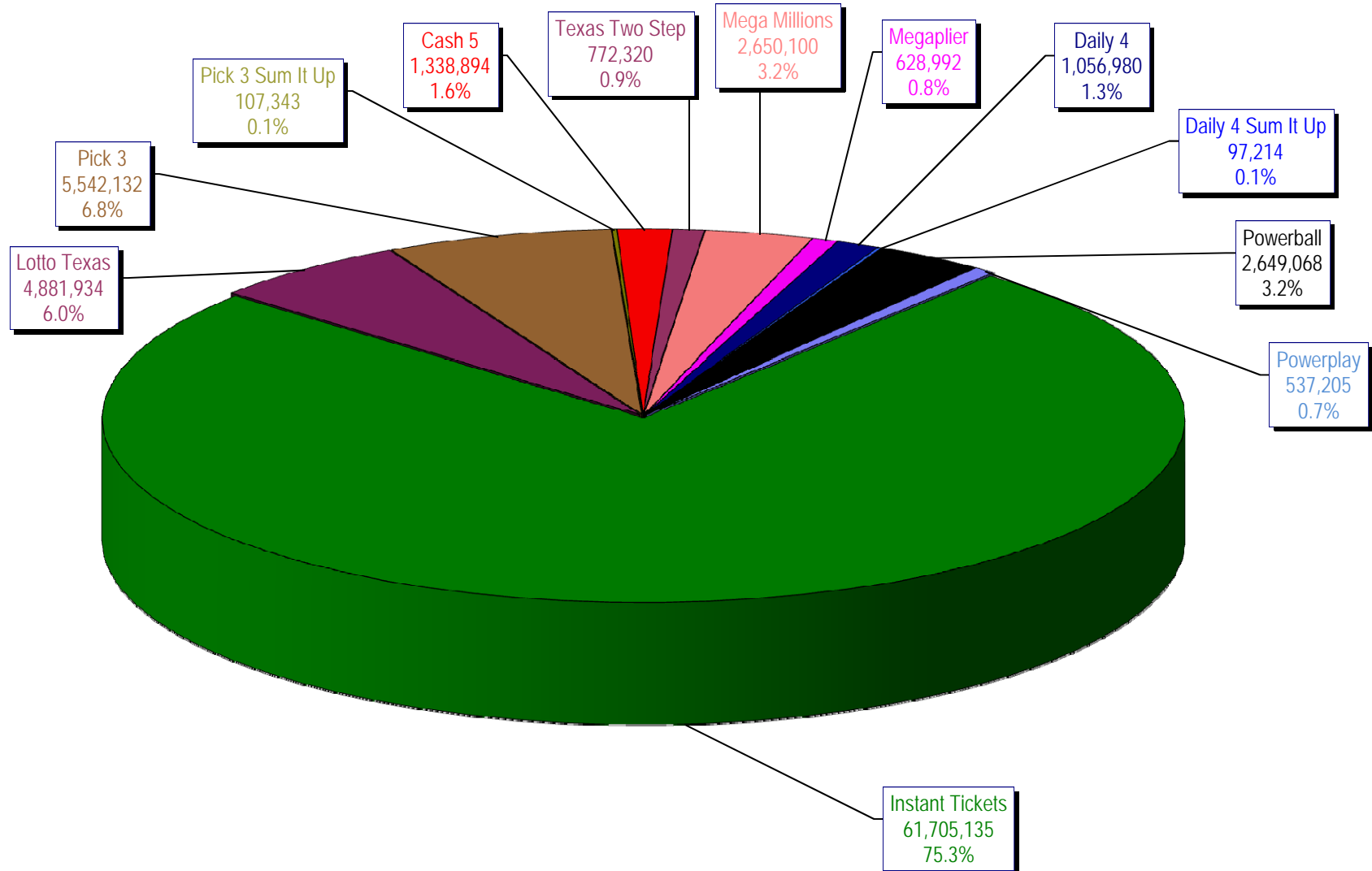
* Before Unclaimed Prizes

** Estimated; depends on # of guaranteed prizes won in Texas

Texas Lottery Commission
Instant Ticket Sales
For the Week Ending 02/06/2010
(Unaudited)



Texas Lottery Commission
All Game Sales
For the Week Ending 02/06/2010
(Unaudited)



Texas Lottery Commission - Weekly Sales Summary for FY 2010 (Unaudited)

Week Ended	Instant Games	New Games & Dates	Lotto Texas	Jackpot W	S	Pick 3	Pick 3 Sum It Up	Cash 5	Texas Two Step	Jackpot M	TH	Mega Millions	Jackpot T	F	Megaplier	Daily 4	Daily 4 Sum It Up	Powerball	Jackpot W	S	Powerplay	Total	Per Cap.	
9/5/2009	53,436,608.00	1183 (\$2.N) - 08/31/09	6,294,287.00	45	47	5,276,229.00	104,886.00	1,338,093.00	1,212,330.00	1.2	200	2,959,401.00	12	12	708,622.00	955,411.00	95,751.00					72,381,618.00	2.98	
9/12/2009	49,896,100.00	1200 (\$1.N), 1201 (\$10.N) - 09/07/09	6,426,945.00	49	51	5,109,927.50	104,641.00	1,278,962.00	771,782.00	225	200	2,811,431.00	18	28	693,407.00	918,268.00	90,931.50					68,102,415.00	2.80	
9/19/2009	50,971,937.00	1202 (\$3.N); 1185 (\$5.N) - 09/14/09	6,496,645.00	53	55	5,176,010.00	103,700.00	1,295,302.00	803,124.00	200	225	3,164,844.00	38	51	760,088.00	965,671.50	94,237.00					69,831,558.50	2.87	
9/26/2009	49,975,243.00	1141 (\$1.N); 1259 (\$3.N) - 09/21/09	6,765,369.00	57	59	4,894,237.50	98,171.00	1,271,129.00	915,249.00	275	400	3,568,088.00	62	75	822,408.00	918,596.00	92,187.50					69,320,678.00	2.85	
10/3/2009	52,283,569.00	1203 (\$2.N); 1172 (\$5.N) - 09/28/09	7,003,107.00	61	63	5,156,873.00	102,841.50	1,315,863.00	1,111,913.00	525	650	4,270,019.00	88	105	939,935.00	993,158.50	97,984.50					73,275,263.50	3.01	
10/10/2009	52,238,261.00	1205 (\$1.N); 1263 (\$3.N) - 10/05/09	7,061,948.00	64	67	5,050,571.00	102,586.50	1,300,852.00	811,464.00	200	225	5,100,350.00	122	145	1,050,507.00	971,147.50	98,012.50					73,785,699.50	3.03	
10/17/2009	50,806,599.00	1187 (\$2.N); 1193 (\$20.N) - 10/12/09	7,262,683.00	70	73	4,990,457.00	99,389.50	1,276,305.00	769,253.00	200	200	6,449,660.00	170	200	1,245,391.00	931,084.00	90,371.00					73,921,192.50	3.04	
10/24/2009	50,731,592.00	1188 (\$3.N); 1189 (\$5.N) - 10/19/09	5,785,292.00	76	4	4,845,815.00	93,256.00	1,282,033.00	806,971.00	225	275	2,776,628.00	12	18	663,491.00	931,641.00	89,284.00					68,006,003.00	2.80	
10/31/2009	50,684,853.00	1192 (\$10.N); 1186 (\$1.N) - 10/26/09	3,749,006.00	5	6	4,944,409.00	98,542.50	1,289,523.00	815,750.00	375	200	2,988,991.00	28	40	717,574.00	1,006,435.00	100,489.50					66,395,573.00	2.73	
11/7/2009	54,633,928.00	1191 (\$7.N) - 11/02/09	3,982,319.00	7	8	5,265,020.50	105,180.50	1,339,215.00	853,140.00	225	275	3,458,403.00	50	63	795,045.00	1,058,564.00	104,724.00					71,595,539.00	2.94	
11/14/2009	52,109,218.00	1218 (\$2.N); 1184 (\$5.N) - 11/09/09	3,985,493.00	9	10	5,172,602.50	104,782.00	1,274,573.00	829,607.00	375	200	3,210,618.00	77	12	752,365.00	983,342.50	93,966.00					68,516,567.00	2.82	
11/21/2009	52,427,881.00	0	3,943,958.00	11	12	5,123,802.00	104,705.00	1,255,026.00	797,796.00	225	275	2,834,318.00	17	27	687,221.00	990,042.00	92,693.00					68,257,442.00	2.81	
11/28/2009	50,519,477.00	1206 (\$1.N); 1190 (\$5.N); 1264 (\$1.N) - 11/23/09	3,966,034.00	13	14	5,043,210.00	102,783.50	1,202,798.00	693,774.00	200	225	2,932,809.00	37	47	691,194.00	985,336.50	92,508.00					66,229,924.00	2.72	
12/5/2009	54,376,448.00	0	4,004,632.00	15	16	5,393,458.00	111,441.50	1,288,282.00	873,210.00	250	350	3,297,486.00	57	69	773,136.00	1,063,424.00	100,271.00					71,281,788.50	2.93	
12/12/2009	52,654,632.00	1159 (\$2.N); 1182 (\$5.N) - 12/07/09	4,105,013.00	17	18	5,091,389.00	102,613.50	1,294,933.00	1,075,732.00	475	600	4,054,401.00	83	100	874,842.00	1,030,471.50	97,299.50					70,381,326.50	2.89	
12/19/2009	54,542,793.00	1207 (\$1.N); 1208 (\$3.N) - 12/14/09	4,355,440.00	20	21	5,115,559.00	100,562.50	1,293,347.00	1,288,820.00	750	925	5,052,350.00	118	140	1,028,695.00	1,046,577.50	98,399.50					73,922,543.50	3.04	
12/26/2009	56,482,042.00	1209 (\$2.N); 1168 (\$5.N) - 12/21/09	4,400,669.00	22	24	4,950,247.50	92,929.50	1,243,523.00	767,273.00	200	200	4,188,741.00	162	12	866,559.00	982,220.50	90,616.50					74,064,821.00	3.04	
1/2/2010	57,952,304.00	0	4,605,833.00	26	27	5,021,566.50	97,500.50	1,319,224.00	889,422.00	225	275	2,825,733.00	16	27	676,790.00	1,012,922.00	93,894.00					74,495,189.00	3.06	
1/9/2010	53,471,476.00	1210 (1.N); 1211 (\$10.N) - 01/04/10	4,579,485.00	29	31	5,094,846.00	97,216.00	1,297,994.00	1,024,853.00	375	525	3,114,965.00	37	48	735,440.00	989,636.00	91,180.50					70,497,091.50	2.90	
1/16/2010	50,524,929.00	1169 (\$1.N); 1212 (\$5.N) - 01/11/10	4,695,322.00	32	33	5,126,839.50	97,356.00	1,291,866.00	940,190.00	200	200	3,482,816.00	60	73	785,670.00	977,468.00	91,520.00					68,013,976.50	2.80	
1/23/2010	51,372,320.00	1195 (\$2.N) - 01/18/10 1198 (\$2.N); 1164 (\$5.N) - 01/21/10	4,777,379.05	35	36	5,022,299.50	95,486.50	1,278,497.00	781,017.00	200	225	4,024,412.00	86	105	862,949.00	977,063.00	89,155.50					69,280,578.55	2.85	
1/30/2010	51,826,337.00	1204 (\$7.N); 1213 (\$1.N) - 01/25/10 1265 (\$2.N) - 01/27/10	4,847,766.00	37	39	5,114,072.00	98,628.00	1,286,765.00	792,340.00	275	200	4,803,680.00	121	144	986,194.00	1,006,099.50	91,113.00					70,852,994.50	2.91	
2/6/2010	61,705,135.00	1068 (\$20.N) - 02/01/10	4,881,934.00	41	42	5,542,131.50	107,342.50	1,338,894.00	772,320.00	225	200	2,650,100.00	12	20	628,992.00	1,056,980.00	97,214.00	2,649,068.00	115	140	537,205.00	81,967,316.00	3.37	
weekly change	19.06%		0.70%			8.37%	8.84%	4.05%	-2.53%			-44.83%			-36.22%	5.06%	6.70%					0.00%		
	SALES		SALES			SALES	SALES	SALES	SALES			SALES			SALES	SALES	SALES				SALES	SALES	% of Sales	
Startup to date	37,474,453,614.00		10,597,050,918.05			3,700,231,168.00	14,709,947.00	2,219,273,753.00	497,461,252.00			1,225,182,614.45			284,230,602.00	111,637,210.00	15,911,238.50	2,649,068.00				537,205.00	56,351,462,562.00	100.0%
Calendar Year to date	285,436,963.00		25,740,667.05			27,545,603.00	129,025.00	6,888,797.00	4,376,936.00			19,035,157.00			4,230,373.00	5,332,649.00	490,545.50	2,649,068.00				537,205.00	379,206,715.55	100.0%
Fiscal Year to date 2010	1,202,335,315.00		117,437,371.05			116,633,410.50	2,308,871.50	29,369,613.00	19,673,321.00			83,652,015.00			18,662,315.00	22,586,999.00	2,157,411.50	2,649,068.00				537,205.00	1,618,022,915.55	100.0%