



WEEKLY SALES SUMMARY

Unaudited

Week Ending: 02/27/2010

Texas Lottery Commission
Fiscal Year to Date Sales Comparison
Unaudited

Through the week ending 02/27/2010 (26 weeks)

Sales by Game	FY 2008 *	FY 2009 **	FY 2010	\$ Change		% Change	
				FY 2010 to FY 2008	FY 2010 to FY 2009 to	FY 2010 to FY 2008	FY 2010 to FY 2009
Instants	\$ 1,419,509,739	\$ 1,381,377,635	\$ 1,375,999,311	\$ -43,510,428	\$ -5,378,324	-3.1%	-0.4%
Lotto Texas	107,430,301	93,946,624	132,284,359	24,854,058	38,337,735	23.1%	40.8%
Pick 3	144,072,013	142,208,049	132,926,441	-11,145,573	-9,281,608	-7.7%	-6.5%
Pick 3 Sum It Up	2,966,159	3,008,670	2,634,996	-331,163	-373,675	-11.2%	-12.4%
Cash Five	38,727,857	35,603,034	33,278,086	-5,449,771	-2,324,948	-14.1%	-6.5%
Texas Two Step	22,305,934	24,081,141	22,137,477	-168,457	-1,943,664	-0.8%	-8.1%
Mega Millions	86,412,661	91,316,866	92,697,689	6,285,028	1,380,824	7.3%	1.5%
Megaplier	20,345,848	21,237,319	20,723,237	377,389	-514,082	1.9%	-2.4%
Daily 4	21,108,934	21,883,217	25,754,596	4,645,663	3,871,379	22.0%	17.7%
Daily 4 Sum It Up	5,094,554	2,739,777	2,438,870	-2,655,684	-300,908	-52.1%	-11.0%
Powerball	-	-	7,026,473	7,026,473	7,026,473	-	-
Power Play	-	-	1,669,838	1,669,838	1,669,838	-	-
Total	\$ 1,867,973,999	\$ 1,817,402,331	\$ 1,849,571,371	\$ -18,402,628	\$ 32,169,040	-1.0%	1.8%

* 3 extra days ** 1 extra day

Texas Lottery Commission
 Fiscal Year to Date Cumulative Average Sales Comparison
 Unaudited

Through the week ending 02/27/2010 (26 weeks)

Sales by Game	FY 2008	FY 2009	FY 2010
Instant	\$ 7,756,884	\$ 7,631,921	\$ 7,644,441
Lotto Texas	587,051	519,042	734,913
Pick 3	787,279	785,680	738,480
Pick 3 Sum It Up	16,209	16,622	14,639
Cash Five	211,628	196,702	184,878
Texas Two Step	121,890	133,045	122,986
Mega Millions	472,200	504,513	514,987
Megaplier	111,179	117,333	115,129
Daily 4	115,349	120,902	143,081
Daily 4 Sum It Up	27,839	15,137	13,549
Powerball	-	-	250,945 *
Power Play	-	-	59,637 *
Total	\$ 10,207,508	\$ 10,040,897	\$ 10,537,666
	thru 03/01/2008 183 days	thru 02/27/2009 181 days	thru 02/27/2010 180 days * 28 days

Texas Lottery Commission
Fiscal Year Over Year Change in Sales
Unaudited
FY 2010 Compared to FY 2009

Week	FY 2010 Week Ending	INSTANT TICKETS				ON-LINE GAMES				TOTAL SALES			
		FY 2010	FY 2009	Difference	% change - Cumulative Sales	FY 2010	FY 2009	Difference	% change - Cumulative Sales	FY 2010	FY 2009	Difference	% change - Cumulative Sales
1	9/5/2009**	\$40,148,241	\$44,890,104	(\$4,741,863)	-10.6%	\$15,859,194	\$14,722,011	\$1,137,184	7.7%	\$56,007,435	\$59,612,115	(\$3,604,680)	-6.0%
2	9/12/2009	\$49,896,100	\$46,309,551	\$3,586,549	7.7%	\$18,206,315	\$13,704,860	\$4,501,455	32.8%	\$68,102,415	\$60,014,411	\$8,088,004	13.5%
3	9/19/2009	\$50,971,937	\$42,923,171	\$8,048,766	18.8%	\$18,859,622	\$12,291,263	\$6,568,359	53.4%	\$69,831,559	\$55,214,434	\$14,617,125	26.5%
4	9/26/2009	\$49,975,243	\$47,042,801	\$2,932,442	6.2%	\$19,345,435	\$14,222,339	\$5,123,096	36.0%	\$69,320,678	\$61,265,140	\$8,055,538	13.1%
5	10/3/2009	\$52,283,569	\$50,747,162	\$1,536,407	3.0%	\$20,991,695	\$15,784,472	\$5,207,223	33.0%	\$73,275,264	\$66,531,634	\$6,743,630	10.1%
6	10/10/2009	\$52,238,261	\$49,763,789	\$2,474,472	5.0%	\$21,547,439	\$15,622,498	\$5,924,941	37.9%	\$73,785,700	\$65,386,287	\$8,399,413	12.8%
7	10/17/2009	\$50,806,599	\$49,299,053	\$1,507,546	3.1%	\$23,114,594	\$15,167,940	\$7,946,654	52.4%	\$73,921,193	\$64,466,993	\$9,454,200	14.7%
8	10/24/2009	\$50,731,592	\$49,977,581	\$754,011	1.5%	\$17,274,411	\$14,525,843	\$2,748,568	18.9%	\$68,006,003	\$64,503,424	\$3,502,579	5.4%
9	10/31/2009	\$50,684,853	\$50,346,542	\$338,311	0.7%	\$15,710,720	\$14,838,845	\$871,876	5.9%	\$66,395,573	\$65,185,387	\$1,210,187	1.9%
10	11/7/2009	\$54,633,928	\$54,860,087	(\$226,159)	-0.4%	\$16,961,611	\$16,057,069	\$904,542	5.6%	\$71,595,539	\$70,917,156	\$678,383	1.0%
11	11/14/2009	\$52,109,218	\$53,484,812	(\$1,375,594)	-2.6%	\$16,407,349	\$15,829,819	\$577,530	3.6%	\$68,516,567	\$69,314,631	(\$798,064)	-1.2%
12	11/21/2009	\$52,427,881	\$52,806,511	(\$378,630)	-0.7%	\$15,829,561	\$16,460,748	(\$631,187)	-3.8%	\$68,257,442	\$69,267,259	(\$1,009,817)	-1.5%
13	11/28/2009	\$50,519,477	\$52,199,741	(\$1,680,264)	-3.2%	\$15,710,447	\$17,397,576	(\$1,687,129)	-9.7%	\$66,229,924	\$69,597,317	(\$3,367,393)	-4.8%
14	12/5/2009	\$54,376,448	\$56,731,851	(\$2,355,403)	-4.2%	\$16,905,341	\$20,363,789	(\$3,458,449)	-17.0%	\$71,281,789	\$77,095,640	(\$5,813,852)	-7.5%
15	12/12/2009	\$52,654,632	\$54,109,617	(\$1,454,985)	-2.7%	\$17,726,695	\$22,952,228	(\$5,225,533)	-22.8%	\$70,381,327	\$77,061,845	(\$6,680,518)	-8.7%
16	12/19/2009	\$54,542,793	\$55,777,328	(\$1,234,535)	-2.2%	\$19,379,751	\$15,833,517	\$3,546,234	22.4%	\$73,922,544	\$71,610,845	\$2,311,699	3.2%
17	12/26/2009	\$56,482,042	\$57,597,885	(\$1,115,843)	-1.9%	\$17,582,779	\$15,851,771	\$1,731,009	10.9%	\$74,064,821	\$73,449,656	\$615,166	0.8%
18	1/2/2010	\$57,952,304	\$57,582,115	\$370,189	0.6%	\$16,542,885	\$16,900,028	(\$357,143)	-2.1%	\$74,495,189	\$74,482,143	\$13,047	0.0%
19	1/9/2010	\$53,471,476	\$54,250,945	(\$779,469)	-1.4%	\$17,025,616	\$16,203,220	\$822,396	5.1%	\$70,497,092	\$70,454,165	\$42,927	0.1%
20	1/16/2010	\$50,524,929	\$51,625,339	(\$1,100,410)	-2.1%	\$17,489,048	\$15,701,605	\$1,787,443	11.4%	\$68,013,977	\$67,326,944	\$687,033	1.0%
21	1/23/2010	\$51,372,320	\$52,789,573	(\$1,417,253)	-2.7%	\$17,908,259	\$15,897,473	\$2,010,786	12.6%	\$69,280,579	\$68,687,046	\$593,533	0.9%
22	1/30/2010	\$51,826,337	\$55,453,471	(\$3,627,134)	-6.5%	\$19,026,658	\$16,908,272	\$2,118,386	12.5%	\$70,852,995	\$72,361,743	(\$1,508,749)	-2.1%
23	2/6/2010	\$61,705,135	\$62,247,711	(\$542,576)	-0.9%	\$20,262,181	\$18,354,314	\$1,907,868	10.4%	\$81,967,316	\$80,602,025	\$1,365,292	1.7%
24	2/13/2010	\$57,505,343	\$60,509,056	(\$3,003,713)	-5.0%	\$18,530,781	\$19,218,078	(\$687,297)	-3.6%	\$76,036,124	\$79,727,134	(\$3,691,010)	-4.6%
25	2/20/2010	\$58,716,226	\$59,194,623	(\$478,397)	-0.8%	\$19,257,668	\$21,098,199	(\$1,840,531)	-8.7%	\$77,973,894	\$80,292,822	(\$2,318,928)	-2.9%
26	2/27/2010	\$57,442,427	\$58,857,216	(\$1,414,789)	-2.4%	\$20,116,011	\$24,116,924	(\$4,000,914)	-16.6%	\$77,558,438	\$82,974,140	(\$5,415,703)	-6.5%
27	3/6/2010		\$59,552,257				\$23,995,136				\$83,547,393		
28	3/13/2010		\$53,754,084				\$18,769,831				\$72,523,915		
29	3/20/2010		\$52,581,107				\$15,903,038				\$68,484,145		
30	3/27/2010		\$52,560,961				\$16,094,933				\$68,655,894		
31	4/3/2010		\$56,249,759				\$17,357,002				\$73,606,761		
32	4/10/2010		\$54,440,987				\$17,660,600				\$72,101,587		
33	4/17/2010		\$52,755,834				\$18,469,585				\$71,225,419		
34	4/24/2010		\$51,450,968				\$20,216,898				\$71,667,866		
35	5/1/2010		\$52,327,090				\$23,520,573				\$75,847,663		
36	5/8/2010		\$53,214,412				\$16,241,207				\$69,455,619		
37	5/15/2010		\$50,785,227				\$15,990,544				\$66,775,771		
38	5/22/2010		\$56,567,077				\$15,874,447				\$72,441,524		
39	5/29/2010		\$55,359,239				\$16,040,196				\$71,399,435		
40	6/5/2010		\$60,250,125				\$16,301,599				\$76,551,724		
41	6/12/2010		\$54,979,517				\$16,143,215				\$71,122,732		
42	6/19/2010		\$53,109,433				\$16,357,924				\$69,467,357		

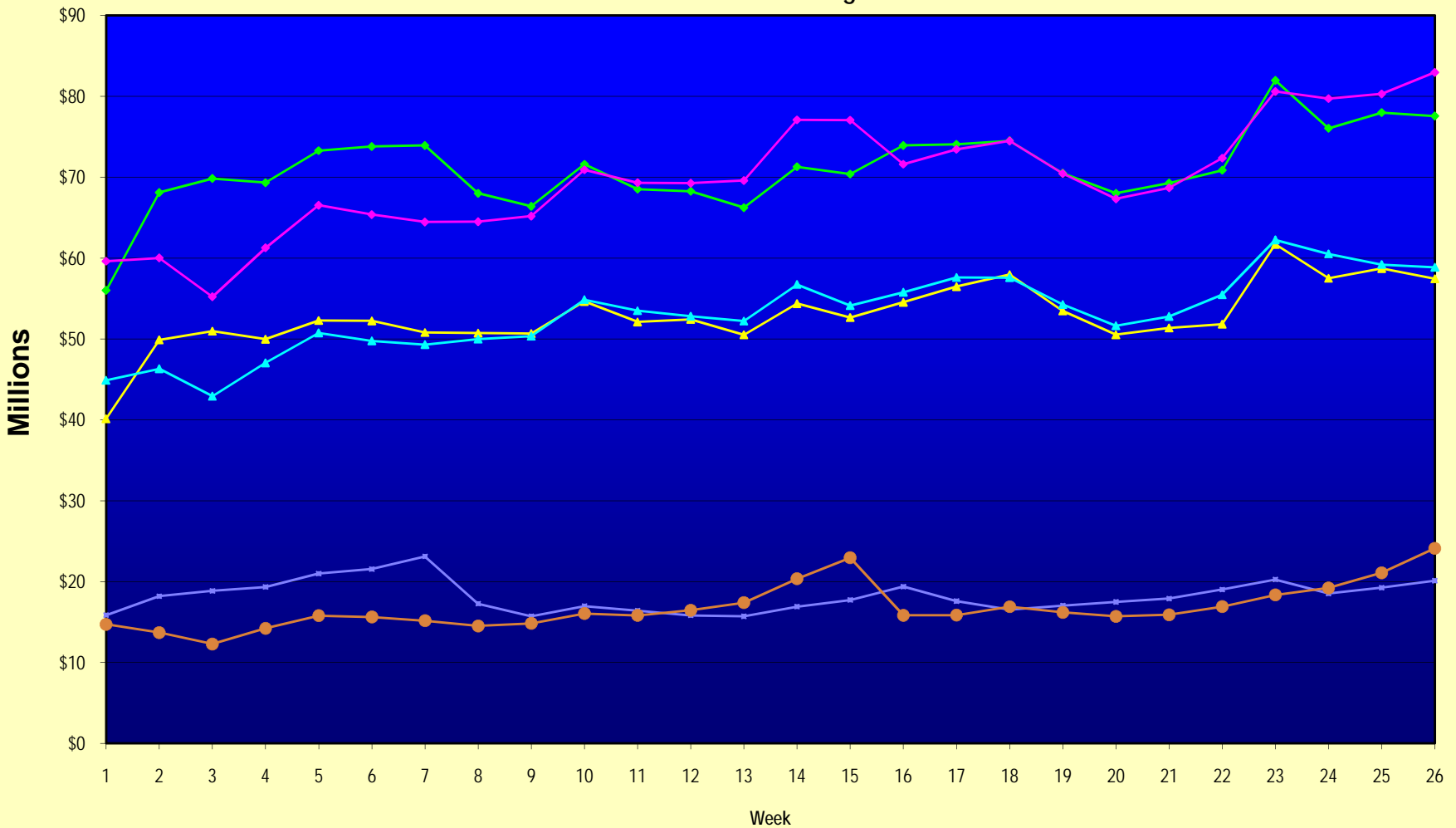
Note: Week 1 is not a full week of sales as this report is prepared on a Fiscal Year basis.

Texas Lottery Commission
Fiscal Year Over Year Change in Sales
Unaudited
FY 2010 Compared to FY 2009

Week	FY 2010 Week Ending	INSTANT TICKETS				ON-LINE GAMES				TOTAL SALES			
		FY 2010	FY 2009	Difference	% change - Cumulative Sales	FY 2010	FY 2009	Difference	% change - Cumulative Sales	FY 2010	FY 2009	Difference	% change - Cumulative Sales
43	6/26/2010		\$53,431,083				\$16,786,203				\$70,217,286		
44	7/3/2010		\$55,518,615				\$18,292,421				\$73,811,036		
45	7/10/2010		\$53,004,390				\$17,842,530				\$70,846,920		
46	7/17/2010		\$52,498,940				\$16,138,341				\$68,637,281		
47	7/24/2010		\$51,550,731				\$16,748,137				\$68,298,868		
48	7/31/2010		\$51,893,977				\$18,065,180				\$69,959,157		
49	8/7/2010		\$54,506,395				\$19,258,117				\$73,764,512		
50	8/14/2010		\$51,766,530				\$20,828,293				\$72,594,823		
51	8/21/2010		\$51,909,040				\$24,913,396				\$76,822,436		
52	8/28/2010		\$50,848,517				\$35,661,563				\$86,510,080		
53			\$13,288,367				\$3,085,816				\$16,374,183		
Total thru Current Week		\$1,375,999,311	\$1,381,377,635	(\$5,378,324)	-0.4%	\$473,572,060	\$436,024,696	\$37,547,364	8.6%	\$1,849,571,371	\$1,817,402,331	\$32,169,040	1.8%
Fiscal Year Total		\$1,375,999,311	\$2,791,532,297			\$473,572,060	\$928,581,414			\$1,849,571,371	\$3,720,113,711		

** FY 2010 includes 5 days; FY 2009 includes 6 days

Texas Lottery Commission Fiscal Year Over Year Change in Sales



◆ Total Sales 2010
 ◆ Total Sales 2009
 ▲ Instant Tickets 2010
 ▲ Instant Tickets 2009
 ■ On-Line Games 2010
 ● On-Line Games 2009

Note: Week 1 is not a full week of sales as this report is prepared on a Fiscal Year basis.

Texas Lottery Commission
Instant Tickets by Price Point
Sales, Prize Expense, Sales Contribution and Payout Percentage With Year Over Year Changes
Unaudited

Fiscal Year	Price Point	# of Active Games	FY Sales	% of Instant Ticket Sales	Year over Year Change in Sales	FY Prize Expense	Year over Year Change in Prize Expense	FY Sales Contribution	Year over Year Change in Contribution	Average Prize Payout %	Year over Year Change in Payout %
2009	\$1.00	39	122,096,054	8.8%		73,436,305		48,659,749		60.1%	0.1%
thru	\$2.00	34	239,460,391	17.3%		156,066,756		83,393,635		65.2%	-0.2%
2/28/2009	\$3.00	14	145,522,851	10.5%		95,652,357		49,870,494		65.7%	0.0%
	\$5.00	38	425,842,279	30.8%		289,617,070		136,225,209		68.0%	0.1%
	\$7.00	7	65,967,685	4.8%		44,863,029		21,104,656		68.0%	0.0%
	\$10.00	16	188,310,850	13.6%		131,772,463		56,538,387		70.0%	0.0%
	\$20.00	8	128,002,620	9.3%		91,855,594		36,147,026		71.8%	0.0%
	\$25.00	1	2,373,025	0.2%		1,726,035		646,990		72.7%	0.2%
	\$30.00	3	10,029,930	0.7%		7,268,034		2,761,896		72.5%	0.1%
	\$50.00	3	53,771,950	3.9%		38,868,021		14,903,929		72.3%	0.2%
Total		163	\$1,381,377,635			\$931,125,663		\$450,251,972		67.4%	-0.4%
2010	\$1.00	32	118,211,735	8.6%		71,042,387		47,169,348		60.1%	0.0%
thru	\$2.00	35	194,830,344	14.2%		128,212,942		66,617,402		65.8%	1.0%
2/27/2010	\$3.00	16	173,390,133	12.6%		114,008,030		59,382,103		65.8%	0.2%
	\$5.00	38	398,219,153	28.9%		270,517,333		127,701,820		67.9%	-0.1%
	\$7.00	6	59,050,866	4.3%		40,152,204		18,898,662		68.0%	0.0%
	\$10.00	13	199,094,980	14.5%		139,127,510		59,967,470		69.9%	-0.1%
	\$20.00	6	197,848,700	14.4%		147,349,485		50,499,215		74.5%	1.8%
	\$25.00	0	-	0.0%		-		-		0.0%	-100.0%
	\$30.00	0	-	0.0%		-		-		0.0%	-100.0%
	\$50.00	2	35,353,400	2.6%		27,391,265		7,962,135		77.5%	3.9%
Total		148	\$1,375,999,311			\$937,801,157		\$438,198,154		68.2%	0.6%
Variance	\$1.00	-7	-3,884,319		-3.2%	-2,393,918	-3.3%	-1,490,401	-3.1%	-0.05%	
2010 to	\$2.00	1	-44,630,047		-18.6%	-27,853,813	-17.8%	-16,776,234	-20.1%	0.63%	
2009	\$3.00	2	27,867,282		19.1%	18,355,673	19.2%	9,511,609	19.1%	0.02%	
	\$5.00	0	-27,623,126		-6.5%	-19,099,737	-6.6%	-8,523,389	-6.3%	-0.08%	
	\$7.00	-1	-6,916,819		-10.5%	-4,710,824	-10.5%	-2,205,995	-10.5%	-0.01%	
	\$10.00	-3	10,784,130		5.7%	7,355,047	5.6%	3,429,083	6.1%	-0.10%	
	\$20.00	-2	69,846,080		54.6%	55,493,892	60.4%	14,352,188	39.7%	2.72%	
	\$25.00	-1	-2,373,025		-100.0%	-1,726,035	-100.0%	-646,990	-100.0%	-72.74%	
	\$30.00	-3	-10,029,930		-100.0%	-7,268,034	-100.0%	-2,761,896	-100.0%	-72.46%	
	\$50.00	-1	-18,418,550		-34.3%	-11,476,757	-29.5%	-6,941,793	-46.6%	5.20%	
Total		-15	-\$5,378,324		-0.4%	\$6,675,494	0.7%	-\$12,053,816	-2.7%	0.75%	

Texas Lottery Commission
Instant Tickets by Price Point
Sales, Prize Expense, Sales Contribution and Payout Percentage With Year Over Year Changes
 Unaudited

Notes - Instant Ticket Variances

		FY 2010		FY 2009		Difference
Sales	\$1 - \$7		\$943,702,231		\$998,889,260	-\$55,187,029
Prize Exp.	\$1 - \$7		\$623,932,897		\$659,635,516	-\$35,702,619
Sales Cont.	\$1 - \$7		\$319,769,335		\$339,253,744	-\$19,484,410
Prize Exp. %	\$1 - \$7		66.1%		66.0%	0.1%
		FY 2010		FY 2009		Difference
Sales	\$10 - \$50		\$432,297,080		\$382,488,375	\$49,808,705
Prize Exp.	\$10 - \$50		\$313,868,260		\$271,490,147	\$42,378,113
Sales Cont.	\$10 - \$50		\$118,428,820		\$110,998,228	\$7,430,592
Prize Exp. %	\$10 - \$50		72.6%		71.0%	1.6%
		FY 2010		FY 2009		Difference
Sales	Instant		\$1,375,999,311		\$1,381,377,635	-\$5,378,324
Prize Exp.	Instant		\$937,801,157		\$931,125,663	\$6,675,494
Sales Cont.	Instant		\$438,198,154		\$450,251,972	-\$12,053,818
Prize Exp. %	Instant		68.2%		67.4%	0.7%

		FY 2010		FY 2009		Difference
Sales	\$1 - \$10		\$1,142,797,211		\$1,187,200,110	-\$44,402,899
Prize Exp.	\$1 - \$10		\$763,060,406		\$791,407,979	-\$28,347,572
Sales Cont.	\$1 - \$10		\$379,736,805		\$395,792,131	-\$16,055,327
Prize Exp. %	\$1 - \$10		66.8%		66.7%	0.1%
		FY 2010		FY 2009		Difference
Sales	\$20 - \$50		\$233,202,100		\$194,177,525	\$39,024,575
Prize Exp.	\$20 - \$50		\$174,740,750		\$139,717,684	\$35,023,066
Sales Cont.	\$20 - \$50		\$58,461,350		\$54,459,841	\$4,001,509
Prize Exp. %	\$20 - \$50		74.9%		72.0%	3.0%
		FY 2010		FY 2009		Difference
Sales	Instant		\$1,375,999,311		\$1,381,377,635	-\$5,378,324
Prize Exp.	Instant		\$937,801,157		\$931,125,663	\$6,675,494
Sales Cont.	Instant		\$438,198,154		\$450,251,972	-\$12,053,818
Prize Exp. %	Instant		68.2%		67.4%	0.7%

Texas Lottery Commission
Weekly Sales Summary
& Comparison to Previous Week
 Unaudited

	Week Ending 02/27/2010		Week Ending 02/20/2010			
	<u>THIS WEEK</u>	% of Sales	<u>LAST WEEK</u>	% of Sales	<u>\$ change</u>	<u>% change</u>
Total Sales	<u>\$77,558,438</u>		<u>\$77,973,894</u>		<u>-\$415,457</u>	-0.53%
Instant Tickets	<u>\$57,442,427</u>	74.1%	<u>\$58,716,226</u>	75.3%	<u>-\$1,273,799</u>	-2.17%
Lotto Texas	\$5,066,421	6.5%	\$4,961,565	6.4%	\$104,856	2.11%
Pick 3	\$5,546,306	7.2%	\$5,390,328	6.9%	\$155,979	2.89%
Pick 3 Sum It Up	\$120,381	0.2%	\$102,609	0.1%	\$17,772	17.32%
Cash Five	\$1,305,799	1.7%	\$1,316,332	1.7%	-\$10,533	-0.80%
Texas Two Step	\$960,381	1.2%	\$788,810	1.0%	\$171,571	21.75%
Mega Millions	\$3,364,353	4.3%	\$3,028,204	3.9%	\$336,149	11.10%
Megaplier	\$742,490	1.0%	\$687,590	0.9%	\$54,900	7.98%
Daily 4	\$1,050,322	1.4%	\$1,078,507	1.4%	-\$28,185	-2.61%
Daily 4 Sum It Up	\$94,685	0.1%	\$94,492	0.1%	\$193	0.20%
Powerball	\$1,482,938	1.9%	\$1,432,071	1.8%	\$50,867	3.55%
Power Play	\$381,936	0.5%	\$377,162	0.5%	\$4,774	1.27%
Total Online Sales	<u>\$20,116,011</u>		<u>\$19,257,668</u>		<u>\$858,343</u>	4.46%

* Totals may not sum due to rounding.

Texas Lottery Commission
Weekly Sales Summary
Unaudited

INSTANT TICKETS
TOP TEN SELLING GAMES

For the Week Ending : 02/27/2010

Rank	Price Point	Game	Sales (Millions)
1	\$ 20	\$500,000,000 BLOCKBUSTER	\$ 4.652
2	\$ 20	\$1,000,000 GOLD RUSH	\$ 3.345
3	\$ 10	GOLD BAR BONANZA	\$ 3.339
4	\$ 5	\$50,000 PAYOUT	\$ 2.776
5	\$ 5	BLACKJACK SHOWDOWN	\$ 2.513
6	\$ 3	MATCH & WIN	\$ 2.135
7	\$ 10	SET FOR LIFE	\$ 2.038
8	\$ 5	\$50,000 CASH	\$ 1.999
9	\$ 5	MONTHLY BONUS	\$ 1.926
10	\$ 7	PRECIOUS PEARL 7S	\$ 1.843

Texas Lottery Commission
Prize Payout Tracking Report
Unaudited

Through Week Ending 02/27/2010

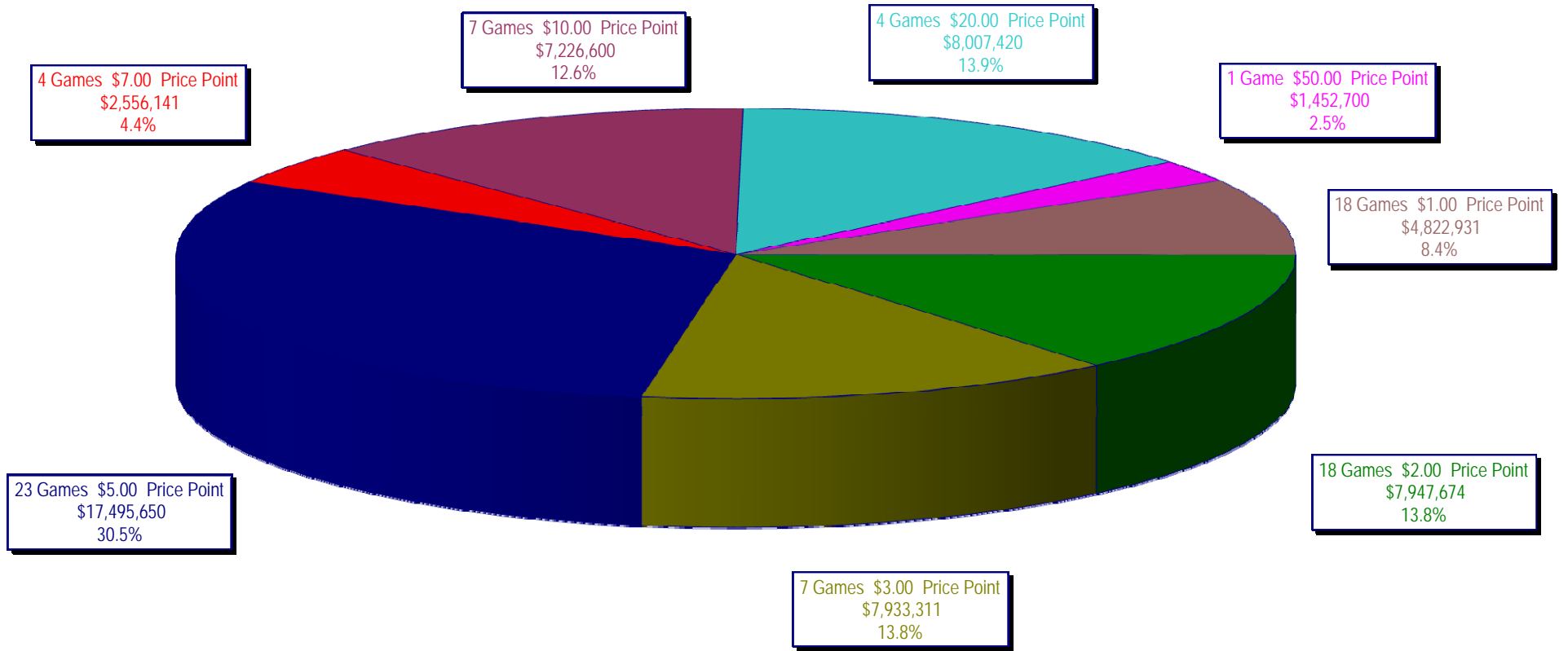
On-Line Sales

		FY Sales Through Week Ending 2/27/2010		FY Prize Expense Through Week Ending 2/27/2010	Actual* Prize Payout	Base Payout (Prize Pool)
Lotto	\$	132,284,359	\$	66,182,588	50.03%	50.00%
Pick 3		132,926,441		61,730,320	46.44%	50.00%
Pick 3 Sum It Up		2,634,996		1,316,297	49.95%	50.00%
Cash Five		33,278,086		17,604,429	52.90%	50.00%
Texas Two Step		22,137,477		11,592,925	52.37%	50.00%
Mega Millions		92,697,689		46,314,990	49.96%	50.00%**
Megaplier		20,723,237		7,284,831	35.15%	N/A
Daily 4		25,754,596		12,331,025	47.88%	50.00%
Daily 4 Sum It Up		2,438,870		1,017,738	41.73%	50.00%
Powerball		7,026,473		3,272,651	46.58%	50.00%
Power Play		1,669,838		390,471	23.38%	50.00%
Totals	\$	473,572,060	\$	229,038,265	48.36%	

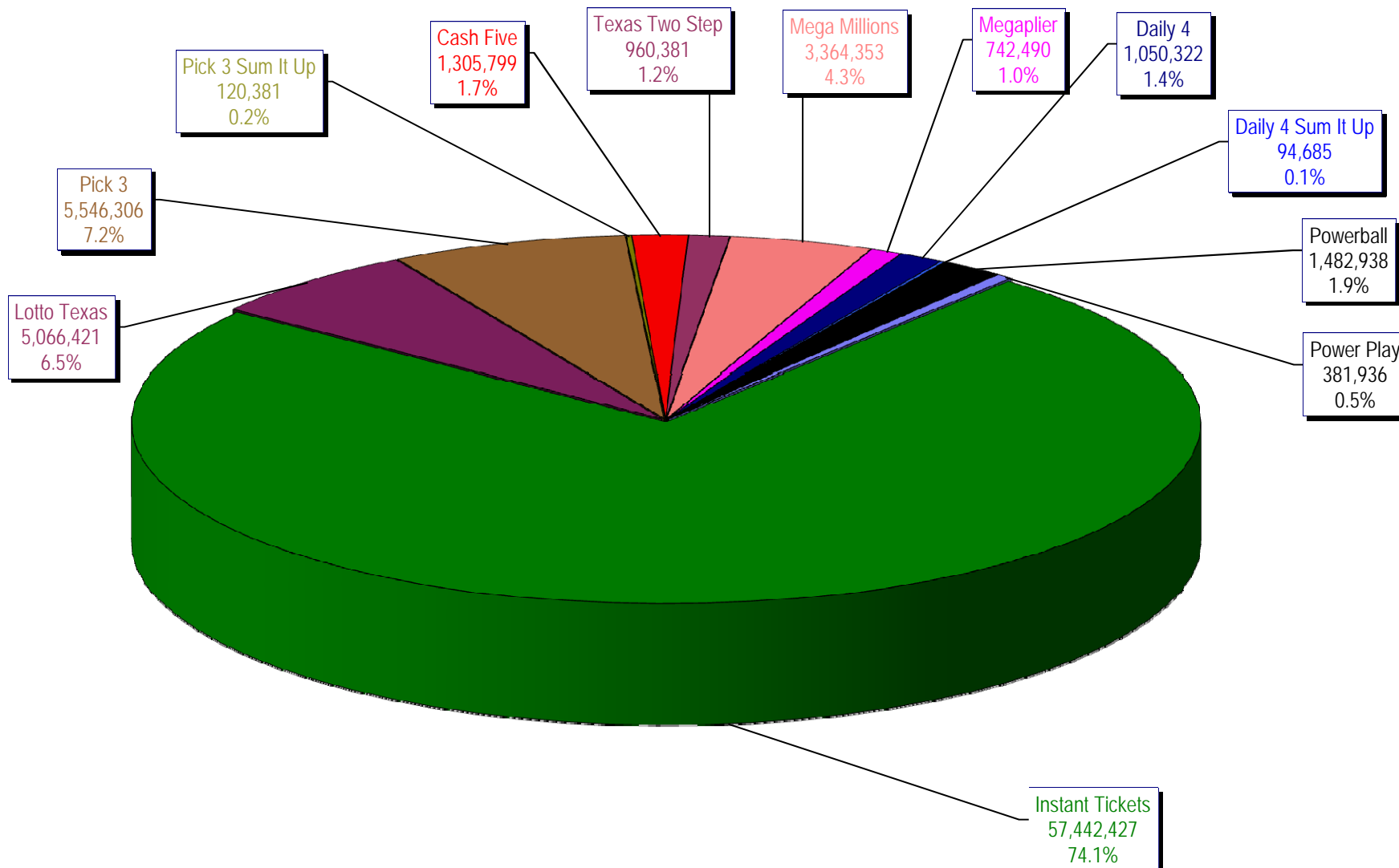
* Before Unclaimed Prizes

** Estimated; depends on # of guaranteed prizes won in Texas

Texas Lottery Commission
Instant Ticket Sales
For the Week Ending 02/27/2010
(Unaudited)



Texas Lottery Commission
All Game Sales
For the Week Ending 02/27/2010
(Unaudited)



Texas Lottery Commission - Weekly Sales Summary for FY 2010 (Unaudited)

Week Ended	Instant Games	New Games & Dates	Lotto Texas	Jackpot W	S	Pick 3	Pick 3 Sum It Up	Cash Five	Texas Two Step	Jackpot M	TH	Mega Millions	Jackpot 7	F	Megaplier	Daily 4	Daily 4 Sum It Up	Powerball	Jackpot W	S	Power Play	Total	Per Cap.
9/5/2009	53,436,608.00	1183 (\$2.N) - 08/31/09	6,294,287.00	45	47	5,276,229.00	104,886.00	1,338,093.00	1,212,330.00	1.2	200	2,959,401.00	12	12	708,622.00	955,411.00	95,751.00					72,381,618.00	2.98
9/12/2009	49,896,100.00	1200 (\$1.N); 1201 (\$10.N) - 09/07/09	6,426,945.00	49	51	5,109,927.50	104,641.00	1,278,982.00	771,782.00	225	200	2,811,431.00	18	28	693,407.00	918,268.00	90,931.50					68,102,415.00	2.80
9/19/2009	50,971,937.00	1202 (\$3.N); 1185 (\$5.N) - 09/14/09	6,496,645.00	53	55	5,176,010.00	103,700.00	1,295,302.00	803,124.00	200	225	3,164,844.00	38	51	760,088.00	965,671.50	94,237.00					69,831,558.50	2.87
9/26/2009	49,975,243.00	1141 (\$1.N); 1259 (\$3.N) - 09/21/09	6,765,369.00	57	59	4,894,237.50	98,171.00	1,271,129.00	915,249.00	275	400	3,568,088.00	62	75	822,408.00	918,596.00	92,187.50					69,320,678.00	2.85
10/3/2009	52,283,569.00	1203 (\$2.N); 1172 (\$5.N) - 09/28/09	7,003,107.00	61	63	5,156,873.00	102,841.50	1,315,863.00	1,111,913.00	525	650	4,270,019.00	88	105	939,935.00	993,158.50	97,984.50					73,275,263.50	3.01
10/10/2009	52,238,261.00	1205 (\$1.N); 1263 (\$3.N) - 10/05/09	7,061,948.00	64	67	5,050,571.00	102,586.50	1,300,852.00	811,464.00	200	225	5,100,350.00	122	145	1,050,507.00	971,147.50	98,012.50					73,785,699.50	3.03
10/17/2009	50,806,599.00	1187 (\$2.N); 1193 (\$20.N) - 10/12/09	7,262,683.00	70	73	4,990,457.00	99,389.50	1,276,305.00	769,253.00	200	200	6,449,660.00	170	200	1,245,391.00	931,084.00	90,371.00					73,921,192.50	3.04
10/24/2009	50,731,592.00	1188 (\$3.N); 1189 (\$5.N) - 10/19/09	5,785,292.00	76	4	4,845,815.00	93,256.00	1,282,033.00	806,971.00	225	275	2,776,628.00	12	18	663,491.00	931,641.00	89,284.00					68,006,003.00	2.80
10/31/2009	50,684,853.00	1192 (\$10.N); 1186 (\$1.N) - 10/26/09	3,749,006.00	5	6	4,944,409.00	98,542.50	1,289,523.00	815,750.00	375	200	2,988,991.00	28	40	717,574.00	1,006,435.00	100,489.50					66,395,573.00	2.73
11/7/2009	54,633,928.00	1191 (\$7.N) - 11/02/09	3,982,319.00	7	8	5,265,020.50	105,180.50	1,339,215.00	853,140.00	225	275	3,458,403.00	50	63	795,045.00	1,058,564.00	104,724.00					71,595,539.00	2.94
11/14/2009	52,109,218.00	1218 (\$2.N); 1184 (\$5.N) - 11/09/09	3,985,493.00	9	10	5,172,602.50	104,782.00	1,274,573.00	829,607.00	375	200	3,210,618.00	77	12	752,365.00	983,342.50	93,966.00					68,516,567.00	2.82
11/21/2009	52,427,881.00	0	3,943,958.00	11	12	5,123,802.00	104,705.00	1,255,026.00	797,796.00	225	275	2,834,318.00	17	27	687,221.00	990,042.00	92,693.00					68,257,442.00	2.81
11/28/2009	50,519,477.00	1206 (\$1.N); 1190 (\$5.N); 1264 (\$1.N) - 11/23/09	3,966,034.00	13	14	5,043,210.00	102,783.50	1,202,798.00	693,774.00	200	225	2,932,809.00	37	47	691,194.00	985,336.50	92,508.00					66,229,924.00	2.72
12/5/2009	54,376,448.00	0	4,004,632.00	15	16	5,393,458.00	111,441.50	1,288,282.00	873,210.00	250	350	3,297,486.00	57	69	773,136.00	1,063,424.00	100,271.00					71,281,788.50	2.93
12/12/2009	52,654,632.00	1159 (\$2.N); 1182 (\$5.N) - 12/07/09	4,105,013.00	17	18	5,091,389.00	102,613.50	1,294,933.00	1,075,732.00	475	600	4,054,401.00	83	100	874,842.00	1,030,471.50	97,299.50					70,381,326.50	2.89
12/19/2009	54,542,793.00	1207 (\$1.N); 1208 (\$3.N) - 12/14/09	4,355,440.00	20	21	5,115,559.00	100,562.50	1,293,347.00	1,288,820.00	750	925	5,052,350.00	118	140	1,028,695.00	1,046,577.50	98,399.50					73,922,543.50	3.04
12/26/2009	56,482,042.00	1209 (\$2.N); 1168 (\$5.N) - 12/21/09	4,400,669.00	22	24	4,950,247.50	92,929.50	1,243,523.00	767,273.00	200	200	4,188,741.00	162	12	866,559.00	982,220.50	90,616.50					74,064,821.00	3.04
1/2/2010	57,952,304.00	0	4,605,833.00	26	27	5,021,566.50	97,500.50	1,319,224.00	889,422.00	225	275	2,825,733.00	16	27	676,790.00	1,012,922.00	93,894.00					74,495,189.00	3.06
1/9/2010	53,471,476.00	1210 (1.N); 1211 (\$10.N) - 01/04/10	4,579,485.00	29	31	5,094,846.00	97,216.00	1,297,994.00	1,024,853.00	375	525	3,114,965.00	37	48	735,440.00	989,636.00	91,180.50					70,497,091.50	2.90
1/16/2010	50,524,929.00	1169 (\$1.N); 1212 (\$5.N) - 01/11/10	4,695,322.00	32	33	5,126,839.50	97,356.00	1,291,866.00	940,190.00	200	200	3,482,816.00	60	73	785,670.00	977,468.00	91,520.00					68,013,976.50	2.80
1/23/2010	51,372,320.00	1195 (\$2.N) - 01/18/10 1198 (\$2.N); 1164 (\$5.N) - 01/21/10	4,777,379.05	35	36	5,022,299.50	95,486.50	1,278,497.00	781,017.00	200	225	4,024,412.00	86	105	862,949.00	977,063.00	89,155.50					69,280,578.55	2.85
1/30/2010	51,826,337.00	1204 (\$7.N); 1213 (\$1.N) - 01/25/10 1265 (\$2.N) - 01/27/10	4,847,766.00	37	39	5,114,072.00	98,628.00	1,286,765.00	792,340.00	275	200	4,803,680.00	121	144	986,194.00	1,006,099.50	91,113.00					70,852,994.50	2.91
2/6/2010	61,705,135.00	1068 (\$20.N) - 02/01/10 1199 (\$3.N); 1215 (\$5.N) - 02/08/10	4,881,934.00	41	42	5,542,131.50	107,342.50	1,338,894.00	772,320.00	225	200	2,650,100.00	12	20	628,992.00	1,056,980.00	97,214.00	2,649,068.00	115	140	537,205.00	81,967,316.00	3.37
2/13/2010	57,505,343.00	1216 (\$1.N); 1170 (\$2.N) - 02/15/10	4,819,001.45	44	45	5,356,396.50	103,135.00	1,286,342.00	714,965.00	225	200	2,653,117.00	32	44	630,842.00	1,038,769.00	92,282.00	1,462,396.00	20	25	373,535.00	76,036,123.95	3.13
2/20/2010	58,716,226.00	0	4,961,565.00	47	49	5,390,327.50	102,608.50	1,316,332.00	788,810.00	225	250	3,028,204.00	56	68	687,590.00	1,078,506.50	94,491.50	1,432,071.00	40	57	377,162.00	77,973,894.00	3.21
2/27/2010	57,442,427.00	1180 (\$5.N) - 02/22/10	5,066,421.00	51	52	5,546,306.00	120,380.50	1,305,799.00	960,381.00	350	475	3,364,353.00	83	99	742,490.00	1,050,321.50	94,684.50	1,482,938.00	76	95	381,936.00	77,558,437.50	3.19
weekly change	-2.17%		2.11%			2.89%	17.32%	-0.80%	21.75%			11.10%			7.98%	-2.61%	0.20%	3.55%			1.27%	-0.53%	
	SALES		SALES			SALES	SALES	SALES	SALES			SALES			SALES	SALES	SALES	SALES			SALES	SALES	% of Sales
Startup to date	37,648,117,610.00		10,611,897,905.50			3,716,524,198.00	15,036,071.00	2,223,182,226.00	499,925,408.00			1,234,228,288.45			286,291,524.00	114,804,807.00	16,192,696.50	7,026,473.00			1,669,838.00	56,583,031,017.45	100.0%
Calendar Year to date	459,100,959.00		40,587,654.50			43,838,633.00	129,025.00	10,797,270.00	6,841,092.00			28,080,831.00			6,291,295.00	8,500,246.00	772,003.50	7,026,473.00			1,669,838.00	604,939,009.00	100.0%
Fiscal Year to date 2010	1,375,999,311.00		132,284,358.50			132,926,440.50	2,634,995.50	33,278,086.00	22,137,477.00			92,697,689.00			20,723,237.00	25,754,596.00	2,438,869.50	7,026,473.00			1,669,838.00	1,849,571,371.00	100.0%