



*WEEKLY SALES SUMMARY*

Unaudited

[Week Ending: 03/05/2011](#)

Texas Lottery Commission  
Fiscal Year to Date Sales Comparison  
Unaudited

Through the week ending 03/05/2011 (27 weeks)

Sales by Game	FY 2009 *	FY 2010 **	FY 2011	\$ Change		% Change	
				FY 2011 to FY 2009	FY 2011 to FY 2010 to	FY 2011 to FY 2009	FY 2011 to FY 2010
Instants	\$ 1,440,929,892	\$ 1,437,437,257	\$ 1,442,430,507	\$ 1,500,615	\$ 4,993,250	0.1%	0.3%
Lotto Texas	98,875,064	137,568,748	89,485,102	-9,389,962	-48,083,646	-9.5%	-35.0%
Pick 3	148,341,838	138,820,930	140,349,713	-7,992,125	1,528,783	-5.4%	1.1%
Pick 3 Sum It Up	3,137,269	2,767,529	2,834,865	-302,404	67,336	-9.6%	2.4%
Cash Five	37,090,219	34,629,233	33,079,336	-4,010,883	-1,549,897	-10.8%	-4.5%
Texas Two Step	26,065,499	23,080,477	24,328,344	-1,737,155	1,247,867	-6.7%	5.4%
Mega Millions	98,215,323	96,743,253	95,975,846	-2,239,477	-767,407	-2.3%	-0.8%
Megaplier	22,586,746	21,567,580	19,730,250	-2,856,496	-1,837,330	-12.6%	-8.5%
Daily 4	22,854,862	26,861,902	29,160,974	6,306,112	2,299,072	27.6%	8.6%
Daily 4 Sum It Up	2,853,013	2,534,823	2,278,803	-574,210	-256,020	-20.1%	-10.1%
Powerball	-	8,767,663	44,616,277	44,616,277	35,848,614	-	-
Power Play	-	2,089,058	10,658,927	10,658,927	8,569,869	-	-
<b>Total</b>	<b>\$ 1,900,949,724</b>	<b>\$ 1,932,868,453</b>	<b>\$ 1,934,928,943</b>	<b>\$ 33,979,220</b>	<b>\$ 2,060,491</b>	<b>1.8%</b>	<b>0.1%</b>

\* 2 extra days      \*\* 1 extra day

Texas Lottery Commission  
Fiscal Year to Date Cumulative Average Sales Comparison  
Unaudited

Through the week ending 03/05/2011 (27 weeks)

Sales by Game	FY 2009	FY 2010	FY 2011
Instants	\$ 7,664,521	\$ 7,686,830	\$ 7,755,003
Lotto Texas	525,931	735,662	481,103
Pick 3	789,052	742,358	754,568
Pick 3 Sum It Up	16,688	14,800	15,241
Cash Five	197,288	185,183	177,846
Texas Two Step	138,646	123,425	130,798
Mega Millions	522,422	517,344	515,999
Megaplier	120,142	115,335	106,077
Daily 4	121,568	143,647	156,779
Daily 4 Sum It Up	15,176	13,555	12,252
Powerball	-	250,505 *	239,872
Power Play	-	59,687 *	57,306
<b>Total</b>	<b>\$ 10,111,435</b>	<b>\$ 10,588,330</b>	<b>\$ 10,402,844</b>

thru 03/07/2009  
188 days

thru 03/06/2010  
187 days  
\*35 days

thru 03/05/2011  
186 days

Texas Lottery Commission  
Fiscal Year Over Year Change in Sales  
Unaudited  
FY 2011 Compared to FY 2010

Week	FY 2011 Week Ending	INSTANT TICKETS				ON-LINE GAMES				TOTAL SALES			
		FY 2011	FY 2010	Difference	% change - Cumulative Sales	FY 2011	FY 2010	Difference	% change - Cumulative Sales	FY 2011	FY 2010	Difference	% change - Cumulative Sales
1	9/4/2010**	\$31,659,033	\$40,148,241	(\$8,489,208)	-21.1%	\$11,430,717	\$15,859,194	(\$4,428,478)	-27.9%	\$43,089,750	\$56,007,435	(\$12,917,686)	-23.1%
2	9/11/2010	\$48,912,598	\$49,896,100	(\$983,502)	-2.0%	\$16,398,160	\$18,206,315	(\$1,808,155)	-9.9%	\$65,310,758	\$68,102,415	(\$2,791,657)	-4.1%
3	9/18/2010	\$48,988,241	\$50,971,937	(\$1,983,696)	-3.9%	\$17,166,827	\$18,859,622	(\$1,692,795)	-9.0%	\$66,155,068	\$69,831,559	(\$3,676,491)	-5.3%
4	9/25/2010	\$48,471,310	\$49,975,243	(\$1,503,933)	-3.0%	\$15,623,813	\$19,345,435	(\$3,721,622)	-19.2%	\$64,095,123	\$69,320,678	(\$5,225,555)	-7.5%
5	10/2/2010	\$50,145,138	\$52,283,569	(\$2,138,431)	-4.1%	\$16,453,939	\$20,991,695	(\$4,537,756)	-21.6%	\$66,599,077	\$73,275,264	(\$6,676,187)	-9.1%
6	10/9/2010	\$50,918,591	\$52,238,261	(\$1,319,670)	-2.5%	\$16,974,963	\$21,547,439	(\$4,572,476)	-21.2%	\$67,893,554	\$73,785,700	(\$5,892,146)	-8.0%
7	10/16/2010	\$49,096,011	\$50,806,599	(\$1,710,588)	-3.4%	\$16,661,904	\$23,114,594	(\$6,452,690)	-27.9%	\$65,757,915	\$73,921,193	(\$8,163,278)	-11.0%
8	10/23/2010	\$50,158,946	\$50,731,592	(\$572,646)	-1.1%	\$17,374,460	\$17,274,411	\$100,049	0.6%	\$67,533,406	\$68,006,003	(\$472,598)	-0.7%
9	10/30/2010	\$49,775,287	\$50,684,853	(\$909,566)	-1.8%	\$18,402,209	\$15,710,720	\$2,691,489	17.1%	\$68,177,496	\$66,395,573	\$1,781,923	2.7%
10	11/6/2010	\$53,337,848	\$54,633,928	(\$1,296,080)	-2.4%	\$17,321,908	\$16,961,611	\$360,297	2.1%	\$70,659,756	\$71,595,539	(\$935,784)	-1.3%
11	11/13/2010	\$52,285,479	\$52,109,218	\$176,261	0.3%	\$16,388,690	\$16,407,349	(\$18,660)	-0.1%	\$68,674,169	\$68,516,567	\$157,602	0.2%
12	11/20/2010	\$52,424,036	\$52,427,881	(\$3,845)	0.0%	\$16,138,022	\$15,829,561	\$308,461	1.9%	\$68,562,058	\$68,257,442	\$304,616	0.4%
13	11/27/2010	\$51,262,518	\$50,519,477	\$743,041	1.5%	\$15,967,075	\$15,710,447	\$256,628	1.6%	\$67,229,593	\$66,229,924	\$999,669	1.5%
14	12/4/2010	\$56,385,259	\$54,376,448	\$2,008,811	3.7%	\$17,553,175	\$16,905,341	\$647,835	3.8%	\$73,938,434	\$71,281,789	\$2,656,646	3.7%
15	12/11/2010	\$56,540,048	\$52,654,632	\$3,885,416	7.4%	\$17,703,352	\$17,726,695	(\$23,343)	-0.1%	\$74,243,400	\$70,381,327	\$3,862,073	5.5%
16	12/18/2010	\$57,699,991	\$54,542,793	\$3,157,198	5.8%	\$18,465,282	\$19,379,751	(\$914,469)	-4.7%	\$76,165,273	\$73,922,544	\$2,242,730	3.0%
17	12/25/2010	\$59,800,480	\$56,482,042	\$3,318,438	5.9%	\$19,635,771	\$17,582,779	\$2,052,992	11.7%	\$79,436,251	\$74,064,821	\$5,371,430	7.3%
18	1/1/2011	\$61,423,121	\$57,952,304	\$3,470,817	6.0%	\$26,122,257	\$16,542,885	\$9,579,372	57.9%	\$87,545,378	\$74,495,189	\$13,050,189	17.5%
19	1/8/2011	\$60,976,653	\$53,471,476	\$7,505,177	14.0%	\$33,521,570	\$17,025,616	\$16,495,954	96.9%	\$94,498,223	\$70,497,092	\$24,001,131	34.0%
20	1/15/2011	\$50,099,433	\$50,524,929	(\$425,496)	-0.8%	\$17,114,637	\$17,489,048	(\$374,411)	-2.1%	\$67,214,070	\$68,013,977	(\$799,907)	-1.2%
21	1/22/2011	\$53,143,646	\$51,372,320	\$1,771,326	3.4%	\$18,091,208	\$17,908,259	\$182,949	1.0%	\$71,234,854	\$69,280,579	\$1,954,275	2.8%
22	1/29/2011	\$54,096,128	\$51,826,337	\$2,269,791	4.4%	\$17,446,156	\$19,026,658	(\$1,580,502)	-8.3%	\$71,542,284	\$70,852,995	\$689,289	1.0%
23	2/5/2011	\$53,433,592	\$61,705,135	(\$8,271,543)	-13.4%	\$17,388,581	\$20,262,181	(\$2,873,600)	-14.2%	\$70,822,173	\$81,967,316	(\$11,145,143)	-13.6%
24	2/12/2011	\$60,277,094	\$57,505,343	\$2,771,751	4.8%	\$18,233,038	\$18,530,781	(\$297,743)	-1.6%	\$78,510,132	\$76,036,124	\$2,474,008	3.3%
25	2/19/2011	\$61,536,763	\$58,716,226	\$2,820,537	4.8%	\$19,387,518	\$19,257,668	\$129,850	0.7%	\$80,924,281	\$77,973,894	\$2,950,387	3.8%
26	2/26/2011	\$59,046,203	\$57,442,427	\$1,603,776	2.8%	\$20,054,404	\$20,116,011	(\$61,607)	-0.3%	\$79,100,607	\$77,558,438	\$1,542,170	2.0%
27	3/5/2011	\$60,537,060	\$61,437,946	(\$900,886)	-1.5%	\$19,478,807	\$21,859,136	(\$2,380,329)	-10.9%	\$80,015,867	\$83,297,082	(\$3,281,215)	-3.9%
28	3/12/2011		\$57,400,063				\$19,979,112				\$77,379,175		
29	3/19/2011		\$54,714,545				\$18,159,358				\$72,873,903		
30	3/26/2011		\$54,229,797				\$18,841,604				\$73,071,401		
31	4/2/2011		\$56,585,236				\$20,062,318				\$76,647,554		
32	4/9/2011		\$54,933,349				\$21,849,425				\$76,782,774		
33	4/16/2011		\$54,850,820				\$22,579,780				\$77,430,600		
34	4/23/2011		\$53,419,824				\$23,249,268				\$76,669,092		
35	4/30/2011		\$53,739,981				\$23,389,542				\$77,129,523		
36	5/7/2011		\$55,268,772				\$23,228,705				\$78,497,477		
37	5/14/2011		\$52,953,124				\$20,813,409				\$73,766,533		
38	5/21/2011		\$51,514,826				\$21,691,660				\$73,206,486		
39	5/28/2011		\$50,850,956				\$22,028,914				\$72,879,870		
40	6/4/2011		\$52,241,131				\$17,819,550				\$70,060,681		
41	6/11/2011		\$50,772,479				\$16,820,362				\$67,592,841		
42	6/18/2011		\$49,726,112				\$16,959,981				\$66,686,093		

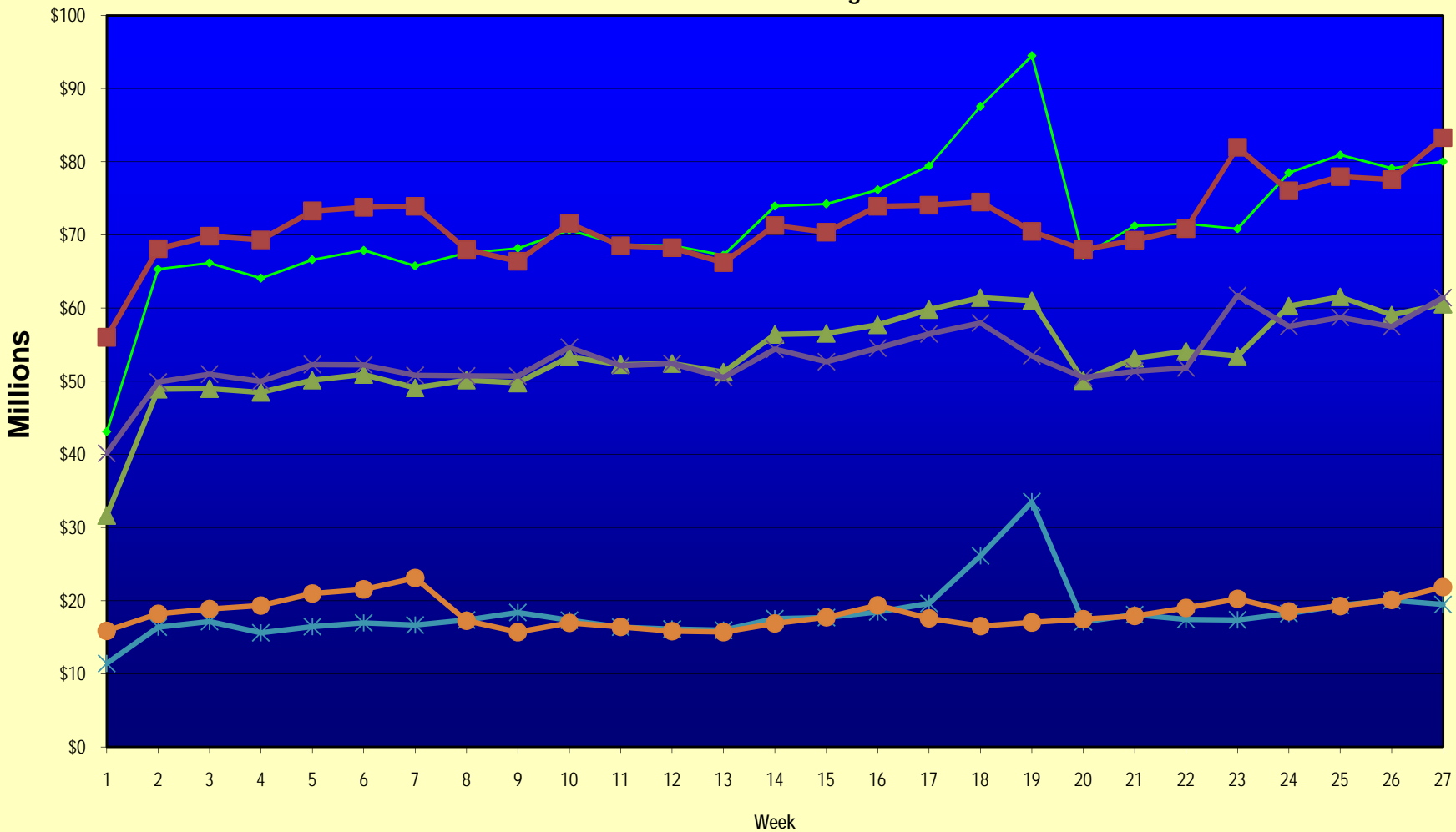
Note: Week 1 is not a full week of sales as this report is prepared on a Fiscal Year basis.

Texas Lottery Commission  
Fiscal Year Over Year Change in Sales  
Unaudited  
FY 2011 Compared to FY 2010

Week	FY 2011 Week Ending	INSTANT TICKETS				ON-LINE GAMES				TOTAL SALES			
		FY 2011	FY 2010	Difference	% change - Cumulative Sales	FY 2011	FY 2010	Difference	% change - Cumulative Sales	FY 2011	FY 2010	Difference	% change - Cumulative Sales
43	6/25/2011		\$49,418,265				\$16,721,308				\$66,139,573		
44	7/2/2011		\$51,856,978				\$16,599,581				\$68,456,559		
45	7/9/2011		\$51,424,550				\$16,765,950				\$68,190,500		
46	7/16/2011		\$50,568,531				\$16,932,672				\$67,501,203		
47	7/23/2011		\$50,839,051				\$16,336,723				\$67,175,774		
48	7/30/2011		\$50,649,830				\$17,033,288				\$67,683,118		
49	8/6/2011		\$53,006,942				\$17,061,563				\$70,068,505		
50	8/13/2011		\$48,763,084				\$16,795,782				\$65,558,866		
51	8/20/2011		\$47,378,934				\$17,566,052				\$64,944,986		
52	8/27/2011		\$47,200,948				\$17,646,347				\$64,847,295		
53	8/31/2011		\$19,227,838				\$5,032,822				\$24,260,660		
Total thru Current Week		\$1,442,430,507	\$1,437,437,257	\$4,993,250	0.3%	\$492,498,436	\$495,431,196	(\$2,932,760)	-0.6%	\$1,934,928,943	\$1,932,868,453	\$2,060,490	0.1%
Fiscal Year Total		\$1,442,430,507	\$2,760,973,223			\$492,498,436	\$977,396,264			\$1,934,928,943	\$3,738,369,487		

\*\* FY 2011 includes 4 days; FY 2010 includes 5 days

### Texas Lottery Commission Fiscal Year Over Year Change in Sales



◆ Total Sales 2011    
 ■ Total Sales 2010    
 ▲ Instant Tickets 2011    
 ✕ Instant Tickets 2010    
 ✧ On-Line Games 2011    
 ● On-Line Games 2010

Note: Week 1 is not a full week of sales as this report is prepared on a Fiscal Year basis.

Texas Lottery Commission  
Instant Tickets by Price Point  
Sales, Prize Expense, Sales Contribution and Payout Percentage With Year Over Year Changes  
Unaudited

Fiscal Year	Price Point	# of Active Games	FY Sales	% of Instant Ticket Sales	Year over Year Change in Sales	FY Prize Expense	Year over Year Change in Prize Expense	FY Sales Contribution	Year over Year Change in Contribution	Average Prize Payout %	Year over Year Change in Payout %
2010	\$1.00	33	123,248,931	8.6%		74,071,708		49,177,223		60.1%	0.0%
thru	\$2.00	35	202,944,138	14.1%		133,401,850		69,542,288		65.7%	0.9%
3/6/2010	\$3.00	16	181,290,075	12.6%		119,202,953		62,087,122		65.8%	0.2%
	\$5.00	38	415,877,188	28.9%		282,331,704		133,545,484		67.9%	-0.2%
	\$7.00	6	61,486,635	4.3%		41,808,145		19,678,490		68.0%	0.0%
	\$10.00	14	210,007,830	14.6%		146,761,247		63,246,583		69.9%	-0.1%
	\$20.00	6	205,835,560	14.3%		153,180,076		52,655,484		74.4%	1.7%
	\$50.00	2	36,746,900	2.6%		28,470,447		8,276,453		77.5%	3.9%
<b>Total</b>		<b>150</b>	<b>\$1,437,437,257</b>			<b>\$979,228,129</b>		<b>\$458,209,128</b>		<b>68.1%</b>	<b>0.5%</b>
2011	\$1.00	30	108,159,892	7.5%		66,338,586		41,821,306		61.3%	2.1%
thru	\$2.00	29	202,668,590	14.1%		132,784,236		69,884,354		65.5%	0.6%
3/5/2011	\$3.00	18	177,457,469	12.3%		116,408,493		61,048,976		65.6%	0.0%
	\$5.00	40	457,495,215	31.7%		311,082,410		146,412,805		68.0%	0.0%
	\$7.00	7	63,109,291	4.4%		42,903,646		20,205,646		68.0%	0.0%
	\$10.00	13	206,538,780	14.3%		146,418,399		60,120,381		70.9%	1.4%
	\$20.00	5	177,598,320	12.3%		131,761,137		45,837,183		74.2%	1.4%
	\$50.00	2	49,402,950	3.4%		38,361,496		11,041,454		77.7%	4.2%
<b>Total</b>		<b>144</b>	<b>\$1,442,430,507</b>			<b>\$986,058,403</b>		<b>\$456,372,104</b>		<b>68.4%</b>	<b>0.9%</b>
Variance	\$1.00	-3	-15,089,039		-12.2%	-7,733,123	-10.4%	-7,355,916	-15.0%	1.23%	
2011 to	\$2.00	-6	-275,548		-0.1%	-617,614	-0.5%	342,066	0.5%	-0.22%	
2010	\$3.00	2	-3,832,606		-2.1%	-2,794,459	-2.3%	-1,038,147	-1.7%	-0.15%	
	\$5.00	2	41,618,027		10.0%	28,750,706	10.2%	12,867,321	9.6%	0.11%	
	\$7.00	1	1,622,656		2.6%	1,095,501	2.6%	527,155	2.7%	-0.01%	
	\$10.00	-1	-3,469,050		-1.7%	-342,848	-0.2%	-3,126,202	-4.9%	1.01%	
	\$20.00	-1	-28,237,240		-13.7%	-21,418,938	-14.0%	-6,818,302	-12.9%	-0.23%	
	\$50.00	0	12,656,050		34.4%	9,891,049	34.7%	2,765,001	33.4%	0.17%	
<b>Total</b>		<b>-6</b>	<b>\$4,993,250</b>		<b>0.3%</b>	<b>\$6,830,274</b>	<b>0.7%</b>	<b>-\$1,837,024</b>	<b>-0.4%</b>	<b>0.24%</b>	

Texas Lottery Commission  
**Instant Tickets by Price Point**  
**Sales, Prize Expense, Sales Contribution and Payout Percentage With Year Over Year Changes**  
 Unaudited

Notes - Instant Ticket Variances

		FY 2011		FY 2010		Difference
Sales	\$1 - \$7		\$1,008,890,457		\$984,846,967	\$24,043,490
Prize Exp.	\$1 - \$7		\$669,517,370		\$650,816,359	\$18,701,011
Sales Cont.	\$1 - \$7		\$339,373,087		\$334,030,608	\$5,342,479
Prize Exp. %	\$1 - \$7		66.4%		66.1%	0.3%
		FY 2011		FY 2010		Difference
Sales	\$10 - \$50		\$433,540,050		\$452,590,290	-\$19,050,240
Prize Exp.	\$10 - \$50		\$316,541,033		\$328,411,769	-\$11,870,737
Sales Cont.	\$10 - \$50		\$116,999,018		\$124,178,521	-\$7,179,503
Prize Exp. %	\$10 - \$50		73.0%		72.6%	0.5%
		FY 2011		FY 2010		Difference
Sales	Instant		\$1,442,430,507		\$1,437,437,257	\$4,993,250
Prize Exp.	Instant		\$986,058,403		\$979,228,129	\$6,830,274
Sales Cont.	Instant		\$456,372,104		\$458,209,128	-\$1,837,024
Prize Exp. %	Instant		68.4%		68.1%	0.2%

		FY 2011		FY 2010		Difference
Sales	\$1 - \$10		\$1,215,429,237		\$1,194,854,797	\$20,574,440
Prize Exp.	\$1 - \$10		\$815,935,769		\$797,577,606	\$18,358,163
Sales Cont.	\$1 - \$10		\$399,493,468		\$397,277,191	\$2,216,277
Prize Exp. %	\$1 - \$10		67.1%		66.8%	0.4%
		FY 2011		FY 2010		Difference
Sales	\$20 - \$50		\$227,001,270		\$242,582,460	-\$15,581,190
Prize Exp.	\$20 - \$50		\$170,122,634		\$181,650,523	-\$11,527,889
Sales Cont.	\$20 - \$50		\$56,878,636		\$60,931,937	-\$4,053,301
Prize Exp. %	\$20 - \$50		74.9%		74.9%	0.1%
		FY 2011		FY 2010		Difference
Sales	Instant		\$1,442,430,507		\$1,437,437,257	\$4,993,250
Prize Exp.	Instant		\$986,058,403		\$979,228,129	\$6,830,274
Sales Cont.	Instant		\$456,372,104		\$458,209,128	-\$1,837,024
Prize Exp. %	Instant		68.4%		68.1%	0.2%

Texas Lottery Commission  
**Weekly Sales Summary**  
**& Comparison to Previous Week**  
 Unaudited

	Week Ending 03/05/2011		Week Ending 02/26/2011			
	<u>THIS WEEK</u>	% of Sales	<u>LAST WEEK</u>	% of Sales	<u>\$ change</u>	<u>% change</u>
Total Sales	<u>\$80,015,867</u>		<u>\$79,100,607</u>		<u>\$915,260</u>	1.16%
Instant Tickets	<u>\$60,537,060</u>	75.7%	<u>\$59,046,203</u>	74.6%	<u>\$1,490,857</u>	2.52%
Lotto	\$3,823,961	4.8%	\$3,765,647	4.8%	\$58,314	1.55%
Pick 3	\$5,818,485	7.3%	\$5,524,278	7.0%	\$294,208	5.33%
Pick 3 Sum It Up	\$112,110	0.1%	\$111,516	0.1%	\$594	0.53%
Cash Five	\$1,320,942	1.7%	\$1,280,405	1.6%	\$40,537	3.17%
Texas Two Step	\$984,506	1.2%	\$820,818	1.0%	\$163,688	19.94%
Mega Millions	\$3,533,405	4.4%	\$2,850,877	3.6%	\$682,528	23.94%
Megaplier	\$781,530	1.0%	\$801,464	1.0%	-\$19,934	-2.49%
Daily 4	\$1,243,800	1.6%	\$1,168,816	1.5%	\$74,984	6.42%
Daily 4 Sum It Up	\$95,453	0.1%	\$88,186	0.1%	\$7,267	8.24%
Powerball	\$1,397,856	1.7%	\$3,027,283	3.8%	-\$1,629,427	-53.82%
Power Play	\$366,759	0.5%	\$615,115	0.8%	-\$248,356	-40.38%
Total Online Sales	<u>\$19,478,807</u>		<u>\$20,054,404</u>		<u>-\$575,598</u>	-2.87%

\* Totals may not sum due to rounding.

Texas Lottery Commission  
Weekly Sales Summary  
Unaudited

INSTANT TICKETS  
TOP TEN SELLING GAMES

For the Week Ending : 03/05/2011

Rank	Price Point	Game	Sales (Millions)
1	\$ 10	TEXAS BLACK	\$ 5.915
2	\$ 20	\$500,000,000 BLOCKBUSTER	\$ 4.177
3	\$ 5	PRICE IS RIGHT	\$ 3.134
4	\$ 5	5 STAR CASH	\$ 2.665
5	\$ 5	SILVER & GOLD	\$ 2.384
6	\$ 50	ULTIMATE CASINO JACKPOT	\$ 2.146
7	\$ 3	BONUS CASHWORD	\$ 2.034
8	\$ 5	GREEN MACHINE	\$ 1.902
9	\$ 3	TRIPLE LUCKY DIAMONDS	\$ 1.856
10	\$ 3	LOTERIA	\$ 1.817

Texas Lottery Commission  
Prize Payout Tracking Report  
Unaudited

Through Week Ending 03/05/2011

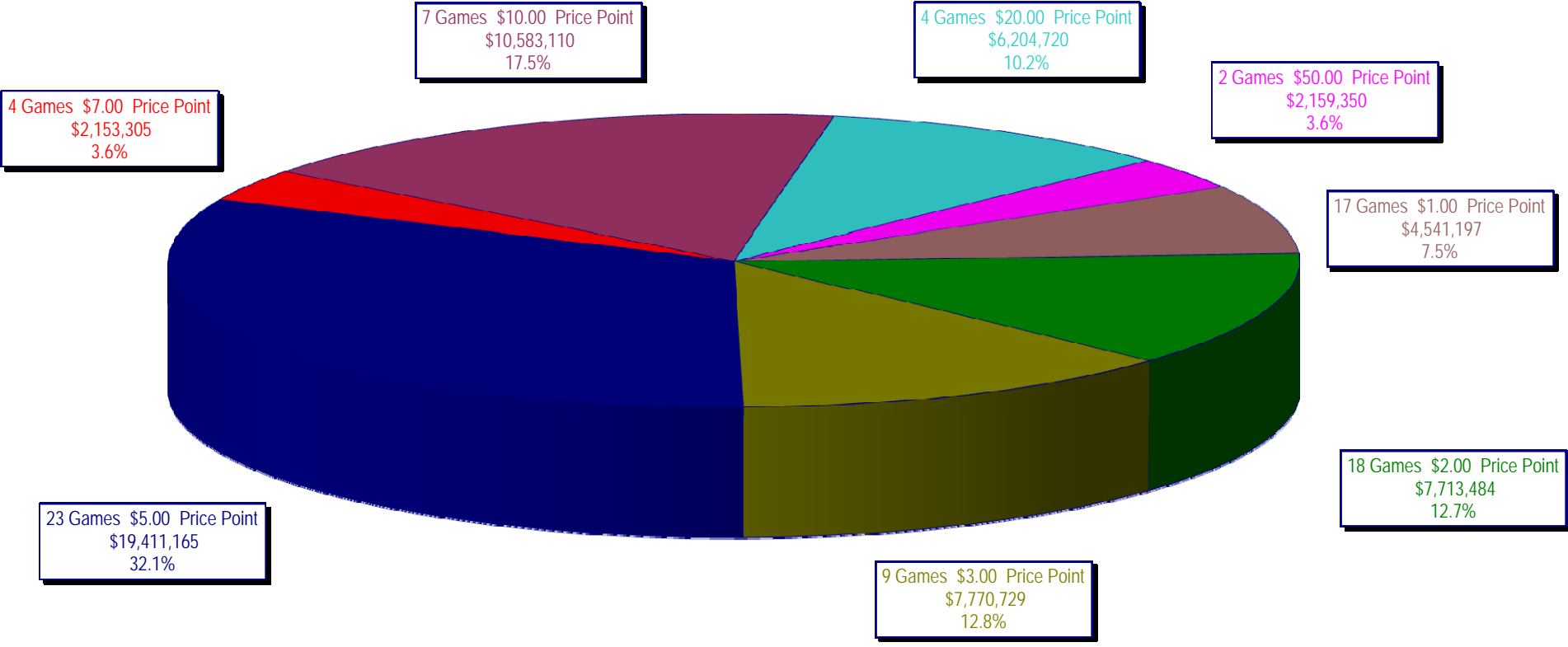
On-Line Sales

		FY Sales Through Week Ending 3/5/2011		FY Prize Expense Through Week Ending 3/5/2011	Actual* Prize Payout	Base Payout (Prize Pool)
Lotto	\$	89,485,102	\$	53,733,846	60.05%	50.00%
Pick 3		140,349,713		69,032,829	49.19%	50.00%
Pick 3 Sum It Up		2,834,865		1,269,074	44.77%	50.00%
Cash Five		33,079,336		16,540,800	50.00%	50.00%
Texas Two Step		24,328,344		12,556,802	51.61%	50.00%
Mega Millions		95,975,846		48,261,926	50.29%	50.00%**
Megaplier		19,730,250		11,281,876	57.18%	N/A
Daily 4		29,160,974		13,302,475	45.62%	50.00%
Daily 4 Sum It Up		2,278,803		975,207	42.79%	50.00%
Powerball		44,616,277		22,731,131	50.95%	50.00%
Power Play		10,658,927		5,831,873	54.71%	50.00%
<b>Totals</b>	\$	<b>492,498,436</b>	\$	<b>255,517,838</b>	<b>51.88%</b>	

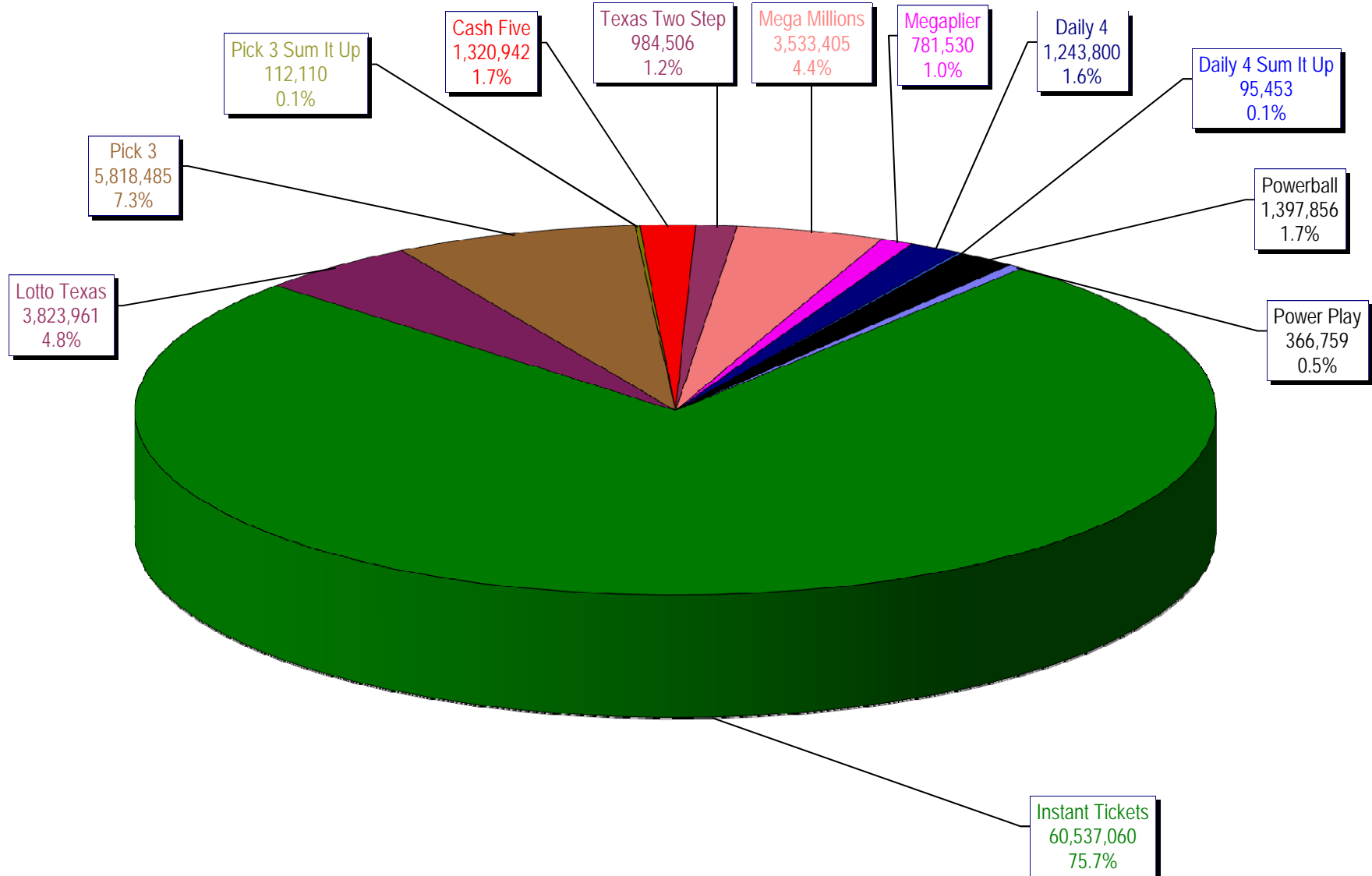
\* Before Unclaimed Prizes

\*\* Estimated; depends on # of guaranteed prizes won in Texas

Texas Lottery Commission  
Instant Ticket Sales  
For the Week Ending 03/05/2011  
(Unaudited)



**Texas Lottery Commission**  
**All Game Sales**  
**For the Week Ending 03/05/2011**  
**(Unaudited)**



Texas Lottery Commission - Weekly Sales Summary for FY 2011 (Unaudited)

Week Ended	Instant Games	New Games & Dates	Lotto Texas	Jackpot		Pick 3	Pick 3 Sum It Up	Cash Five	Texas Two Step	Jackpot		Mega Millions	Jackpot		Megaplier	Daily 4	Daily 4 Sum It Up	Powerball	Jackpot		Power Play	Total	Per Cap.
				W	S					M	TH		T	F					W	S			
9/4/2010	50,886,871	1251 (\$3,N); 1248 (\$5,N) - 08/30/10	3,238,939	4	5	5,133,180	99,799	1,255,137	907,736	275	375	2,216,782	12	16	525,380	1,081,186	85,150	1,543,448	34	47	376,802	67,350,410	2.72
9/11/2010	48,912,598	1147 (\$2,N) - 09/06/10 1346 (\$10,N) - 09/09/10	3,154,833	6	7	5,202,514	97,823	1,211,276	762,324	200	225	2,195,801	25	34	519,467	1,065,276	82,080	1,709,056	62	79	397,711	65,310,758	2.64
9/18/2010	48,988,241	1281 (\$1,N); 1246 (\$5,N) - 09/13/10	3,172,150	8	4	5,124,056	99,166	1,220,135	791,490	275	200	2,434,917	44	54	561,933	1,057,398	82,257	2,156,491	94	112	466,834	66,155,068	2.67
9/25/2010	48,471,310	1313 (\$2,N) - 09/20/10	3,103,083	5	6	4,971,566	95,270	1,212,530	772,370	225	200	2,067,112	12	16	496,860	1,036,994	79,412	1,430,615	20	25	358,001	64,095,123	2.59
10/2/2010	50,145,138	1234 (\$5,N) - 09/27/10	3,222,746	7	8	5,204,986	104,577	1,234,899	823,382	225	275	2,240,144	23	32	528,413	1,076,154	86,262	1,552,770	35	48	379,608	66,599,077	2.69
10/9/2010	50,918,591	0.00	3,280,138	9	10	5,314,323	117,023	1,225,735	1,029,730	375	500	2,412,454	41	51	555,007	1,071,718	84,446	1,512,464	60	20	371,925	67,893,554	2.74
10/16/2010	49,096,011	1284 (\$7,N); 1285 (\$20,N) - 10/11/10	3,296,700	11	12	5,063,257	106,357	1,194,375	925,090	650	200	2,715,784	61	72	594,908	1,018,024	78,845	1,326,299	25	34	342,265	65,757,915	2.65
10/23/2010	50,158,946	1286 (\$1,N); 1287 (\$5,N) - 10/18/10 1344 (\$1,N) - 10/20/10	3,335,547	13	14	5,032,655	106,948	1,199,133	825,573	225	275	3,316,557	86	101	682,142	1,012,732	78,498	1,428,095	46	59	356,580	67,533,406	2.73
10/30/2010	49,775,287	1243 (\$2,N) - 10/25/10 1345 (\$3,N) - 10/27/10	3,381,643	15	16	5,024,213	106,782	1,187,956	823,604	375	200	3,953,547	118	140	780,698	1,060,330	83,556	1,609,281	72	87	390,600	68,177,496	2.75
11/6/2010	53,337,848	1237 (\$1,N); 1290 (\$10,N) - 11/01/10	3,077,378	4	5	5,272,446	108,946	1,236,736	834,465	225	275	2,115,522	12	16	503,490	1,113,528	89,447	2,450,557	104	123	519,393	70,659,756	2.85
11/13/2010	52,285,479	1289 (\$3,N); 1291 (\$5,N) - 11/08/10	3,119,350	6	7	5,326,172	109,316	1,235,631	1,019,783	375	500	2,123,118	25	12	506,225	1,099,192	87,965	1,407,333	20	25	354,606	68,674,169	2.77
11/20/2010	52,424,036	1288 (\$2,N) - 11/15/10	3,162,292	8	9	5,124,861	104,372	1,234,396	795,125	200	225	2,132,040	16	25	513,725	1,064,835	84,612	1,543,690	35	50	378,075	68,562,058	2.77
11/27/2010	51,262,518	1280 (\$1,N); 1292 (\$5,N) - 11/22/10	3,149,608	10	11	4,923,209	98,827	1,167,907	823,798	275	375	2,138,067	34	42	504,292	1,022,779	81,580	1,659,305	64	79	397,704	67,229,593	2.71
12/4/2010	56,385,259	0	3,209,886	12	4	5,363,547	109,244	1,253,990	1,186,124	475	625	2,557,727	52	62	583,255	1,122,484	89,338	1,676,877	95	20	400,704	73,938,434	2.98
12/11/2010	56,540,048	1294 (\$1,N); 1282 (\$5,N) - 12/06/10	3,017,170	4	5	5,249,891	105,120	1,247,150	1,610,514	775	1,000	2,939,445	74	88	635,353	1,112,322	86,776	1,349,316	25	37	350,296	74,243,400	3.00
12/18/2010	57,699,991	1296 (\$3,N) - 12/13/10	3,109,357	6	7	5,252,987	103,488	1,245,192	1,210,115	1,200	200	3,933,829	104	123	784,466	1,102,301	86,146	1,297,373	20	25	340,030	76,165,273	3.07
12/25/2010	59,800,480	1299 (\$1,N); 1229 (\$5,N) - 12/20/10	3,068,654	8	9	5,231,226	107,702	1,204,856	868,156	225	275	5,351,969	145	168	985,293	1,104,373	87,086	1,295,059	35	46	331,397	79,436,251	3.21
1/1/2011	61,423,121	0	3,359,890	10	11	5,077,612	102,834	1,237,160	811,499	200	225	10,941,746	200	242	1,800,536	1,071,712	84,683	1,300,553	20	25	334,032	87,545,378	3.53
1/8/2011	60,976,653	1235 (\$2,N); 1244 (\$7,N) - 01/03/11	3,707,467	12	13	5,293,334	108,360	1,318,987	819,622	200	200	16,790,680	355	12	2,368,323	1,072,909	85,890	1,576,046	34	51	379,953	94,498,223	3.81
1/15/2011	50,099,433	1347 (\$1,N); 1295 (\$5,N) - 01/10/11	3,452,519	14	15	5,106,627	103,731	1,257,272	812,492	200	225	2,482,466	20	30	586,636	1,050,658	83,033	1,763,215	67	82	415,988	67,214,070	2.71
1/22/2011	53,143,646	1301 (\$2,N); 1276 (\$10,N) - 01/17/11	3,556,243	16	17	5,117,082	103,758	1,256,776	930,899	275	400	2,718,720	40	51	634,744	1,034,584	79,578	2,175,063	96	118	483,762	71,234,854	2.87
1/29/2011	54,096,128	0	3,571,489	18	19	5,146,945	107,882	1,247,311	785,350	200	200	3,092,586	63	77	693,500	1,048,424	80,444	1,327,163	20	25	345,062	71,542,284	2.89
2/5/2011	53,433,592	1306 (\$1,N); 1283 (\$5,N); 1343 (\$5,N) - 01/31/11	3,385,152	20	21	5,603,353	109,006	1,244,065	813,277	200	225	2,640,105	91	12	607,698	1,173,019	91,003	1,369,001	35	50	352,903	70,822,173	2.86
2/12/2011	60,277,094	1304 (\$1,N); 1305 (\$3,N) - 02/07/11	3,582,855	22	23	5,763,866	112,625	1,297,205	987,718	275	400	2,425,191	19	30	694,650	1,202,906	92,669	1,667,284	63	82	406,069	78,510,132	3.17
2/19/2011	61,536,763	1225 (\$2,N); 1307 (\$5,N) - 02/14/11	3,751,031	24	25	5,688,758	113,341	1,298,336	969,766	525	200	2,626,037	40	52	738,866	1,213,075	91,579	2,378,242	101	126	518,488	80,924,281	3.27
2/26/2011	59,046,203	1242 (\$2,N) - 02/24/11	3,765,647	26	27	5,524,278	111,516	1,280,405	820,818	200	225	2,850,877	64	76	801,464	1,168,816	88,186	3,027,283	155	184	615,115	79,100,607	3.19
3/5/2011	60,537,060	1308 (\$1,N); 1309 (\$5,N) - 02/28/11	3,823,961	28	29	5,818,485	112,110	1,320,942	984,506	275	400	3,533,405	88	105	781,530	1,243,800	95,453	1,397,856	20	25	366,759	80,015,867	3.23
weekly change	2.5%		1.5%			5.3%	0.5%	3.2%	19.9%			23.9%		-2.5%	6.4%	8.2%		-53.8%		-40.4%		1.2%	
	<b>SALES</b>		<b>SALES</b>			<b>SALES</b>	<b>SALES</b>	<b>SALES</b>	<b>SALES</b>			<b>SALES</b>		<b>SALES</b>	<b>SALES</b>	<b>SALES</b>	<b>SALES</b>	<b>SALES</b>		<b>SALES</b>	<b>SALES</b>	<b>% of Sales</b>	
Startup to date	40,475,522,029		10,824,991,897			3,993,485,306	20,593,801	2,289,263,822	551,179,845			1,404,868,688		322,635,437	171,519,259	20,816,653	99,953,725			23,793,643	60,406,758,076	100.0%	
Calendar Year to date	520,625,362		33,545,371			49,853,621	123,957	11,688,500	7,947,129			39,645,800		7,981,667	10,371,918	800,847	17,012,233			3,977,373	703,573,777	100.0%	
Fiscal Year to date 2011	1,442,430,507		89,485,102			140,349,713	2,834,865	33,079,336	24,328,344			95,975,846		19,730,250	29,160,974	2,278,803	44,616,277			10,658,927	1,934,928,943	100.0%	