



WEEKLY SALES SUMMARY

Unaudited

[Week Ending: 07/17/2010](#)

Texas Lottery Commission
Fiscal Year to Date Sales Comparison
Unaudited

Through the week ending 07/17/2010 (46 weeks)

Sales by Game	FY 2008 *	FY 2009 **	FY 2010	\$ Change		% Change	
				FY 2010 to FY 2008	FY 2010 to FY 2009 to	FY 2010 to FY 2008	FY 2010 to FY 2009
Instants	\$ 2,479,141,391	\$ 2,465,768,740	\$ 2,443,906,596	\$ -35,234,795	\$ -21,862,144	-1.4%	-0.9%
Lotto Texas	179,643,405	169,673,271	234,830,244	55,186,839	65,156,973	30.7%	38.4%
Pick 3	254,311,681	253,151,229	237,732,330	-16,579,351	-15,418,899	-6.5%	-6.1%
Pick 3 Sum It Up	5,768,850	5,291,201	4,756,562	-1,012,288	-534,639	-17.5%	-10.1%
Cash Five	67,174,672	62,791,839	58,500,798	-8,673,874	-4,291,041	-12.9%	-6.8%
Texas Two Step	42,937,406	44,427,954	43,365,670	428,264	-1,062,284	1.0%	-2.4%
Mega Millions	153,853,560	169,985,064	149,707,704	-4,145,856	-20,277,360	-2.7%	-11.9%
Megaplier	36,442,590	38,772,608	33,434,745	-3,007,845	-5,337,863	-8.3%	-13.8%
Daily 4	37,472,594	41,103,878	46,597,415	9,124,822	5,493,537	24.4%	13.4%
Daily 4 Sum It Up	7,667,184	4,823,870	4,246,867	-3,420,317	-577,003	-44.6%	-12.0%
Powerball	-	-	45,929,339	45,929,339	45,929,339	-	-
Power Play	-	-	10,822,016	10,822,016	10,822,016	-	-
Total	\$ 3,264,413,332	\$ 3,255,789,653	\$ 3,313,830,285	\$ 49,416,954	\$ 58,040,632	1.5%	1.8%

* 3 extra days ** 1 extra day

Texas Lottery Commission
 Fiscal Year to Date Cumulative Average Sales Comparison
 Unaudited

Through the week ending 07/17/2010 (46 weeks)

Sales by Game	FY 2008	FY 2009	FY 2010
Instant	\$ 7,675,360	\$ 7,681,523	\$ 7,637,208
Lotto Texas	556,172	528,577	733,845
Pick 3	787,343	788,633	742,914
Pick 3 Sum It Up	17,860	16,483	14,864
Cash Five	207,971	195,613	182,815
Texas Two Step	132,933	138,405	135,518
Mega Millions	476,327	529,548	467,837
Megaplier	112,825	120,787	104,484
Daily 4	116,014	128,049	145,617
Daily 4 Sum It Up	23,737	15,028	13,271
Powerball	-	-	273,389 *
Power Play	-	-	64,417 *
Total	\$ 10,106,543	\$ 10,142,647	\$ 10,516,177
	thru 07/19/2008 323 days	thru 07/18/2009 321 days	thru 07/17/2010 320 days * 168 days

Texas Lottery Commission
Fiscal Year Over Year Change in Sales
Unaudited
FY 2010 Compared to FY 2009

Week	FY 2010 Week Ending	INSTANT TICKETS				ON-LINE GAMES				TOTAL SALES			
		FY 2010	FY 2009	Difference	% change - Cumulative Sales	FY 2010	FY 2009	Difference	% change - Cumulative Sales	FY 2010	FY 2009	Difference	% change - Cumulative Sales
1	9/5/2009**	\$40,148,241	\$44,890,104	(\$4,741,863)	-10.6%	\$15,859,194	\$14,722,011	\$1,137,184	7.7%	\$56,007,435	\$59,612,115	(\$3,604,680)	-6.0%
2	9/12/2009	\$49,896,100	\$46,309,551	\$3,586,549	7.7%	\$18,206,315	\$13,704,860	\$4,501,455	32.8%	\$68,102,415	\$60,014,411	\$8,088,004	13.5%
3	9/19/2009	\$50,971,937	\$42,923,171	\$8,048,766	18.8%	\$18,859,622	\$12,291,263	\$6,568,359	53.4%	\$69,831,559	\$55,214,434	\$14,617,125	26.5%
4	9/26/2009	\$49,975,243	\$47,042,801	\$2,932,442	6.2%	\$19,345,435	\$14,222,339	\$5,123,096	36.0%	\$69,320,678	\$61,265,140	\$8,055,538	13.1%
5	10/3/2009	\$52,283,569	\$50,747,162	\$1,536,407	3.0%	\$20,991,695	\$15,784,472	\$5,207,223	33.0%	\$73,275,264	\$66,531,634	\$6,743,630	10.1%
6	10/10/2009	\$52,238,261	\$49,763,789	\$2,474,472	5.0%	\$21,547,439	\$15,622,498	\$5,924,941	37.9%	\$73,785,700	\$65,386,287	\$8,399,413	12.8%
7	10/17/2009	\$50,806,599	\$49,299,053	\$1,507,546	3.1%	\$23,114,594	\$15,167,940	\$7,946,654	52.4%	\$73,921,193	\$64,466,993	\$9,454,200	14.7%
8	10/24/2009	\$50,731,592	\$49,977,581	\$754,011	1.5%	\$17,274,411	\$14,525,843	\$2,748,568	18.9%	\$68,006,003	\$64,503,424	\$3,502,579	5.4%
9	10/31/2009	\$50,684,853	\$50,346,542	\$338,311	0.7%	\$15,710,720	\$14,838,845	\$871,876	5.9%	\$66,395,573	\$65,185,387	\$1,210,187	1.9%
10	11/7/2009	\$54,633,928	\$54,860,087	(\$226,159)	-0.4%	\$16,961,611	\$16,057,069	\$904,542	5.6%	\$71,595,539	\$70,917,156	\$678,383	1.0%
11	11/14/2009	\$52,109,218	\$53,484,812	(\$1,375,594)	-2.6%	\$16,407,349	\$15,829,819	\$577,530	3.6%	\$68,516,567	\$69,314,631	(\$798,064)	-1.2%
12	11/21/2009	\$52,427,881	\$52,806,511	(\$378,630)	-0.7%	\$15,829,561	\$16,460,748	(\$631,187)	-3.8%	\$68,257,442	\$69,267,259	(\$1,009,817)	-1.5%
13	11/28/2009	\$50,519,477	\$52,199,741	(\$1,680,264)	-3.2%	\$15,710,447	\$17,397,576	(\$1,687,129)	-9.7%	\$66,229,924	\$69,597,317	(\$3,367,393)	-4.8%
14	12/5/2009	\$54,376,448	\$56,731,851	(\$2,355,403)	-4.2%	\$16,905,341	\$20,363,789	(\$3,458,449)	-17.0%	\$71,281,789	\$77,095,640	(\$5,813,852)	-7.5%
15	12/12/2009	\$52,654,632	\$54,109,617	(\$1,454,985)	-2.7%	\$17,726,695	\$22,952,228	(\$5,225,533)	-22.8%	\$70,381,327	\$77,061,845	(\$6,680,518)	-8.7%
16	12/19/2009	\$54,542,793	\$55,777,328	(\$1,234,535)	-2.2%	\$19,379,751	\$15,833,517	\$3,546,234	22.4%	\$73,922,544	\$71,610,845	\$2,311,699	3.2%
17	12/26/2009	\$56,482,042	\$57,597,885	(\$1,115,843)	-1.9%	\$17,582,779	\$15,851,771	\$1,731,009	10.9%	\$74,064,821	\$73,449,656	\$615,166	0.8%
18	1/2/2010	\$57,952,304	\$57,582,115	\$370,189	0.6%	\$16,542,885	\$16,900,028	(\$357,143)	-2.1%	\$74,495,189	\$74,482,143	\$13,047	0.0%
19	1/9/2010	\$53,471,476	\$54,250,945	(\$779,469)	-1.4%	\$17,025,616	\$16,203,220	\$822,396	5.1%	\$70,497,092	\$70,454,165	\$42,927	0.1%
20	1/16/2010	\$50,524,929	\$51,625,339	(\$1,100,410)	-2.1%	\$17,489,048	\$15,701,605	\$1,787,443	11.4%	\$68,013,977	\$67,326,944	\$687,033	1.0%
21	1/23/2010	\$51,372,320	\$52,789,573	(\$1,417,253)	-2.7%	\$17,908,259	\$15,897,473	\$2,010,786	12.6%	\$69,280,579	\$68,687,046	\$593,533	0.9%
22	1/30/2010	\$51,826,337	\$55,453,471	(\$3,627,134)	-6.5%	\$19,026,658	\$16,908,272	\$2,118,386	12.5%	\$70,852,995	\$72,361,743	(\$1,508,749)	-2.1%
23	2/6/2010	\$61,705,135	\$62,247,711	(\$542,576)	-0.9%	\$20,262,181	\$18,354,314	\$1,907,868	10.4%	\$81,967,316	\$80,602,025	\$1,365,292	1.7%
24	2/13/2010	\$57,505,343	\$60,509,056	(\$3,003,713)	-5.0%	\$18,530,781	\$19,218,078	(\$687,297)	-3.6%	\$76,036,124	\$79,727,134	(\$3,691,010)	-4.6%
25	2/20/2010	\$58,716,226	\$59,194,623	(\$478,397)	-0.8%	\$19,257,668	\$21,098,199	(\$1,840,531)	-8.7%	\$77,973,894	\$80,292,822	(\$2,318,928)	-2.9%
26	2/27/2010	\$57,442,427	\$58,857,216	(\$1,414,789)	-2.4%	\$20,116,011	\$24,116,924	(\$4,000,914)	-16.6%	\$77,558,438	\$82,974,140	(\$5,415,703)	-6.5%
27	3/6/2010	\$61,437,946	\$59,552,257	\$1,885,689	3.2%	\$21,859,136	\$23,995,136	(\$2,136,000)	-8.9%	\$83,297,082	\$83,547,393	(\$250,311)	-0.3%
28	3/13/2010	\$57,400,063	\$53,754,084	\$3,645,979	6.8%	\$19,979,112	\$18,769,831	\$1,209,281	6.4%	\$77,379,175	\$72,523,915	\$4,855,260	6.7%
29	3/20/2010	\$54,714,545	\$52,581,107	\$2,133,438	4.1%	\$18,159,358	\$15,903,038	\$2,256,320	14.2%	\$72,873,903	\$68,484,145	\$4,389,758	6.4%
30	3/27/2010	\$54,229,797	\$52,560,961	\$1,668,836	3.2%	\$18,841,604	\$16,094,933	\$2,746,671	17.1%	\$73,071,401	\$68,655,894	\$4,415,507	6.4%
31	4/3/2010	\$56,585,236	\$56,249,759	\$335,477	0.6%	\$20,062,318	\$17,357,002	\$2,705,316	15.6%	\$76,647,554	\$73,606,761	\$3,040,793	4.1%
32	4/10/2010	\$54,933,349	\$54,440,987	\$492,362	0.9%	\$21,849,425	\$17,660,600	\$4,188,825	23.7%	\$76,782,774	\$72,101,587	\$4,681,187	6.5%
33	4/17/2010	\$54,850,820	\$52,755,834	\$2,094,986	4.0%	\$22,579,780	\$18,469,585	\$4,110,195	22.3%	\$77,430,600	\$71,225,419	\$6,205,181	8.7%
34	4/24/2010	\$53,419,824	\$51,450,968	\$1,968,856	3.8%	\$23,249,268	\$20,216,898	\$3,032,369	15.0%	\$76,669,092	\$71,667,866	\$5,001,225	7.0%
35	5/1/2010	\$53,739,981	\$52,327,090	\$1,412,891	2.7%	\$23,389,542	\$23,520,573	(\$131,031)	-0.6%	\$77,129,523	\$75,847,663	\$1,281,860	1.7%
36	5/8/2010	\$55,268,772	\$53,214,412	\$2,054,360	3.9%	\$23,228,705	\$16,241,207	\$6,987,499	43.0%	\$78,497,477	\$69,455,619	\$9,041,859	13.0%
37	5/15/2010	\$52,953,124	\$50,785,227	\$2,167,897	4.3%	\$20,813,409	\$15,990,544	\$4,822,865	30.2%	\$73,766,533	\$66,775,571	\$6,990,962	10.5%
38	5/22/2010	\$51,514,826	\$56,567,077	(\$5,052,251)	-8.9%	\$21,691,660	\$15,874,447	\$5,817,214	36.6%	\$73,206,486	\$72,441,524	\$764,963	1.1%
39	5/29/2010	\$50,850,956	\$55,359,239	(\$4,508,283)	-8.1%	\$22,028,914	\$16,040,196	\$5,988,719	37.3%	\$72,879,870	\$71,399,435	\$1,480,436	2.1%
40	6/5/2010	\$52,241,131	\$60,250,125	(\$8,008,994)	-13.3%	\$17,819,550	\$16,301,599	\$1,517,951	9.3%	\$70,060,681	\$76,551,724	(\$6,491,044)	-8.5%
41	6/12/2010	\$50,772,479	\$54,979,517	(\$4,207,038)	-7.7%	\$16,820,362	\$16,143,215	\$677,147	4.2%	\$67,592,841	\$71,122,732	(\$3,529,891)	-5.0%
42	6/19/2010	\$49,726,112	\$53,109,433	(\$3,383,321)	-6.4%	\$16,959,981	\$16,357,924	\$602,057	3.7%	\$66,686,093	\$69,467,357	(\$2,781,264)	-4.0%

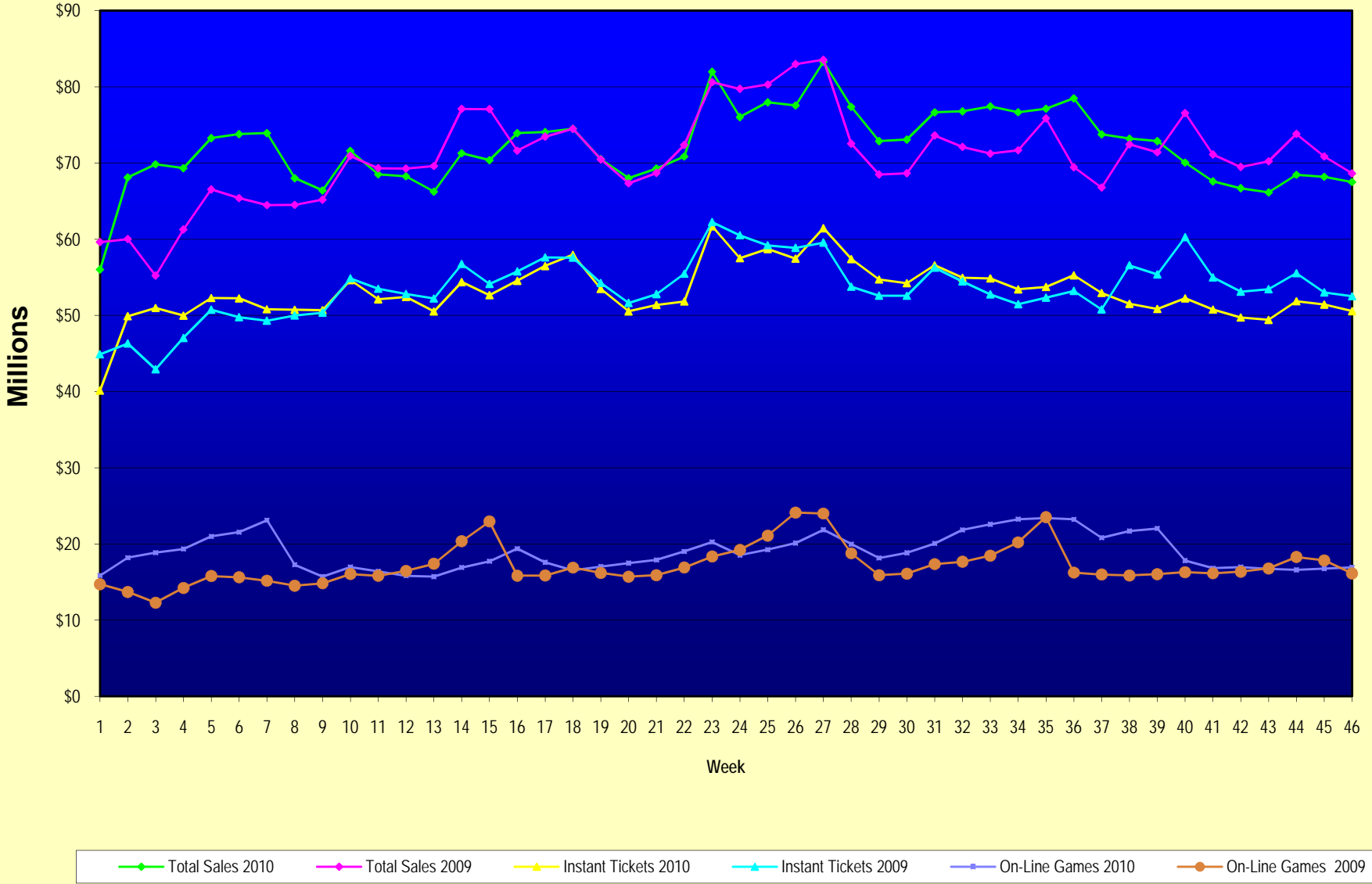
Note: Week 1 is not a full week of sales as this report is prepared on a Fiscal Year basis.

Texas Lottery Commission
Fiscal Year Over Year Change in Sales
Unaudited
FY 2010 Compared to FY 2009

Week	FY 2010 Week Ending	INSTANT TICKETS				ON-LINE GAMES				TOTAL SALES			
		FY 2010	FY 2009	Difference	% change - Cumulative Sales	FY 2010	FY 2009	Difference	% change - Cumulative Sales	FY 2010	FY 2009	Difference	% change - Cumulative Sales
43	6/26/2010	\$49,418,265	\$53,431,083	(\$4,012,818)	-7.5%	\$16,721,308	\$16,786,203	(\$64,895)	-0.4%	\$66,139,573	\$70,217,286	(\$4,077,713)	-5.8%
44	7/3/2010	\$51,856,978	\$55,518,615	(\$3,661,637)	-6.6%	\$16,599,581	\$18,292,421	(\$1,692,840)	-9.3%	\$68,456,559	\$73,811,036	(\$5,354,477)	-7.3%
45	7/10/2010	\$51,424,550	\$53,004,390	(\$1,579,840)	-3.0%	\$16,765,950	\$17,842,530	(\$1,076,580)	-6.0%	\$68,190,500	\$70,846,920	(\$2,656,420)	-3.7%
46	7/17/2010	\$50,568,531	\$52,498,940	(\$1,930,409)	-3.7%	\$16,932,672	\$16,138,341	\$794,331	4.9%	\$67,501,203	\$68,637,281	(\$1,136,078)	-1.7%
47	7/24/2010		\$51,550,731				\$16,748,137				\$68,298,868		
48	7/31/2010		\$51,893,977				\$18,065,180				\$69,959,157		
49	8/7/2010		\$54,506,395				\$19,258,117				\$73,764,512		
50	8/14/2010		\$51,766,530				\$20,828,293				\$72,594,823		
51	8/21/2010		\$51,909,040				\$24,913,396				\$76,822,436		
52	8/28/2010		\$50,848,517				\$35,661,563				\$86,510,080		
53			\$13,288,367				\$3,085,816				\$16,374,183		
Total thru Current Week		\$2,443,906,596	\$2,465,768,740	(\$21,862,144)	-0.9%	\$869,923,689	\$790,020,913	\$79,902,776	10.1%	\$3,313,830,285	\$3,255,789,653	\$58,040,632	1.8%
Fiscal Year Total		\$2,443,906,596	\$2,791,532,297			\$869,923,689	\$928,581,414			\$3,313,830,285	\$3,720,113,711		

** FY 2010 includes 5 days; FY 2009 includes 6 days

Texas Lottery Commission Fiscal Year Over Year Change in Sales



Note: Week 1 is not a full week of sales as this report is prepared on a Fiscal Year basis.

Texas Lottery Commission
Instant Tickets by Price Point
Sales, Prize Expense, Sales Contribution and Payout Percentage With Year Over Year Changes
Unaudited

Fiscal Year	Price Point	# of Active Games	FY Sales	% of Instant Ticket Sales	Year over Year Change in Sales	FY Prize Expense	Year over Year Change in Prize Expense	FY Sales Contribution	Year over Year Change in Contribution	Average Prize Payout %	Year over Year Change in Payout %
2009	\$1.00	45	211,424,850	8.6%		127,167,290		84,257,560		60.1%	0.1%
thru	\$2.00	42	404,694,053	16.4%		263,663,330		141,030,723		65.2%	-0.2%
7/18/2009	\$3.00	18	256,333,569	10.4%		168,130,346		88,203,223		65.6%	-0.2%
	\$5.00	48	754,456,292	30.6%		513,386,597		241,069,695		68.0%	0.2%
	\$7.00	8	119,904,211	4.9%		81,544,719		38,359,492		68.0%	0.0%
	\$10.00	21	340,905,510	13.8%		238,558,763		102,346,747		70.0%	0.0%
	\$20.00	9	259,407,900	10.5%		188,923,989		70,483,911		72.8%	1.5%
	\$25.00	1	2,372,325	0.1%		1,725,527		646,798		72.7%	0.2%
	\$30.00	3	10,023,630	0.4%		7,263,494		2,760,136		72.5%	0.1%
	\$50.00	4	106,246,400	4.3%		78,884,089		27,362,311		74.2%	2.9%
Total		199	\$2,465,768,740			\$1,669,248,144		\$796,520,596		67.7%	0.0%
2010	\$1.00	40	203,799,672	8.3%		122,019,666		81,780,006		59.9%	-0.4%
thru	\$2.00	40	338,968,461	13.9%		222,011,307		116,957,154		65.5%	0.5%
7/17/2010	\$3.00	21	302,561,821	12.4%		198,967,642		103,594,179		65.8%	0.3%
	\$5.00	47	740,825,465	30.3%		503,767,821		237,057,644		68.0%	0.0%
	\$7.00	8	105,891,947	4.3%		71,998,710		33,893,237		68.0%	0.0%
	\$10.00	17	347,532,210	14.2%		243,748,404		103,783,806		70.1%	0.3%
	\$20.00	7	320,509,420	13.1%		237,862,286		82,647,134		74.2%	1.5%
	\$25.00	0	-	0.0%		-		-		0.0%	-100.0%
	\$30.00	0	-	0.0%		-		-		0.0%	-100.0%
	\$50.00	3	83,817,600	3.4%		65,008,117		18,809,483		77.6%	4.0%
Total		183	\$2,443,906,596			\$1,665,383,952		\$778,522,644		68.1%	0.6%
Variance	\$1.00	-5	-7,625,178		-3.6%	-5,147,624	-4.0%	-2,477,554	-2.9%	-0.28%	
2010 to	\$2.00	-2	-65,725,592		-16.2%	-41,652,023	-15.8%	-24,073,569	-17.1%	0.34%	
2009	\$3.00	3	46,228,252		18.0%	30,837,297	18.3%	15,390,955	17.4%	0.17%	
	\$5.00	-1	-13,630,827		-1.8%	-9,618,776	-1.9%	-4,012,051	-1.7%	-0.05%	
	\$7.00	0	-14,012,264		-11.7%	-9,546,009	-11.7%	-4,466,255	-11.6%	-0.02%	
	\$10.00	-4	6,626,700		1.9%	5,189,641	2.2%	1,437,059	1.4%	0.16%	
	\$20.00	-2	61,101,520		23.6%	48,938,297	25.9%	12,163,223	17.3%	1.38%	
	\$25.00	-1	-2,372,325		-100.0%	-1,725,527	-100.0%	-646,798	-100.0%	-72.74%	
	\$30.00	-3	-10,023,630		-100.0%	-7,263,494	-100.0%	-2,760,136	-100.0%	-72.46%	
	\$50.00	-1	-22,428,800		-21.1%	-13,875,972	-17.6%	-8,552,828	-31.3%	3.31%	
Total		-16	-\$21,862,144		-0.9%	-\$3,864,191	-0.2%	-\$17,997,953	-2.3%	0.45%	

Texas Lottery Commission
Instant Tickets by Price Point
Sales, Prize Expense, Sales Contribution and Payout Percentage With Year Over Year Changes
 Unaudited

Notes - Instant Ticket Variances

		FY 2010		FY 2009		Difference
Sales	\$1 - \$7		\$1,692,047,366		\$1,746,812,975	-\$54,765,609
Prize Exp.	\$1 - \$7		\$1,118,765,146		\$1,153,892,281	-\$35,127,136
Sales Cont.	\$1 - \$7		\$573,282,220		\$592,920,694	-\$19,638,473
Prize Exp. %	\$1 - \$7		66.1%		66.1%	0.1%
		FY 2010		FY 2009		Difference
Sales	\$10 - \$50		\$751,859,230		\$718,955,765	\$32,903,465
Prize Exp.	\$10 - \$50		\$546,618,807		\$515,355,862	\$31,262,944
Sales Cont.	\$10 - \$50		\$205,240,423		\$203,599,903	\$1,640,521
Prize Exp. %	\$10 - \$50		72.7%		71.7%	1.0%
		FY 2010		FY 2009		Difference
Sales	Instant		\$2,443,906,596		\$2,465,768,740	-\$21,862,144
Prize Exp.	Instant		\$1,665,383,952		\$1,669,248,144	-\$3,864,191
Sales Cont.	Instant		\$778,522,644		\$796,520,596	-\$17,997,953
Prize Exp. %	Instant		68.1%		67.7%	0.4%

		FY 2010		FY 2009		Difference
Sales	\$1 - \$10		\$2,039,579,576		\$2,087,718,485	-\$48,138,909
Prize Exp.	\$1 - \$10		\$1,362,513,550		\$1,392,451,045	-\$29,937,495
Sales Cont.	\$1 - \$10		\$677,066,026		\$695,267,440	-\$18,201,414
Prize Exp. %	\$1 - \$10		66.8%		66.7%	0.1%
		FY 2010		FY 2009		Difference
Sales	\$20 - \$50		\$404,327,020		\$378,050,255	\$26,276,765
Prize Exp.	\$20 - \$50		\$302,870,403		\$276,797,099	\$26,073,304
Sales Cont.	\$20 - \$50		\$101,456,617		\$101,253,156	\$203,461
Prize Exp. %	\$20 - \$50		74.9%		73.2%	1.7%
		FY 2010		FY 2009		Difference
Sales	Instant		\$2,443,906,596		\$2,465,768,740	-\$21,862,144
Prize Exp.	Instant		\$1,665,383,952		\$1,669,248,144	-\$3,864,191
Sales Cont.	Instant		\$778,522,644		\$796,520,596	-\$17,997,953
Prize Exp. %	Instant		68.1%		67.7%	0.4%

Texas Lottery Commission
 Weekly Sales Summary
 & Comparison to Previous Week
 Unaudited

	Week Ending 07/17/2010		Week Ending 07/10/2010			
	<u>THIS WEEK</u>	% of Sales	<u>LAST WEEK</u>	% of Sales	<u>\$ change</u>	<u>% change</u>
Total Sales	<u>\$67,501,203</u>		<u>\$68,190,500</u>		<u>-\$689,298</u>	-1.01%
Instant Tickets	<u>\$50,568,531</u>	74.9%	<u>\$51,424,550</u>	75.4%	<u>-\$856,019</u>	-1.66%
Lotto Texas	\$3,637,755	5.4%	\$3,556,571	5.2%	\$81,184	2.28%
Pick 3	\$4,980,645	7.4%	\$5,057,376	7.4%	-\$76,731	-1.52%
Pick 3 Sum It Up	\$94,888	0.1%	\$97,943	0.1%	-\$3,055	-3.12%
Cash Five	\$1,209,044	1.8%	\$1,215,129	1.8%	-\$6,085	-0.50%
Texas Two Step	\$1,117,022	1.7%	\$920,296	1.3%	\$196,726	21.38%
Mega Millions	\$2,443,495	3.6%	\$2,156,809	3.2%	\$286,686	13.29%
Megaplier	\$564,294	0.8%	\$520,043	0.8%	\$44,251	8.51%
Daily 4	\$1,073,709	1.6%	\$1,039,218	1.5%	\$34,492	3.32%
Daily 4 Sum It Up	\$84,823	0.1%	\$86,904	0.1%	-\$2,082	-2.40%
Powerball	\$1,372,821	2.0%	\$1,702,570	2.5%	-\$329,749	-19.37%
Power Play	\$354,176	0.5%	\$413,092	0.6%	-\$58,916	-14.26%
Total Online Sales	<u>\$16,932,672</u>		<u>\$16,765,950</u>		<u>\$166,722</u>	0.99%

* Totals may not sum due to rounding.

Texas Lottery Commission
Weekly Sales Summary
Unaudited

INSTANT TICKETS
TOP TEN SELLING GAMES

For the Week Ending : 07/17/2010

Rank	Price Point	Game	Sales (Millions)
1	\$ 20	\$500,000,000 BLOCKBUSTER	\$ 3.377
2	\$ 5	POWERBALL	\$ 3.228
3	\$ 20	SUPER SET FOR LIFE	\$ 2.851
4	\$ 10	MEGA JUMBO BUCKS III	\$ 2.587
5	\$ 5	GIANT JUMBO BUCKS III	\$ 2.491
6	\$ 5	20X THE CASH	\$ 2.441
7	\$ 5	CASINO ROYALE	\$ 2.004
8	\$ 7	TOTALLY TOPAZ 7'S	\$ 1.619
9	\$ 50	ULTIMATE CASINO JACKPOT	\$ 1.526
10	\$ 3	LOTERIA TEXAS	\$ 1.513

Texas Lottery Commission
Prize Payout Tracking Report
Unaudited

Through Week Ending 07/17/2010

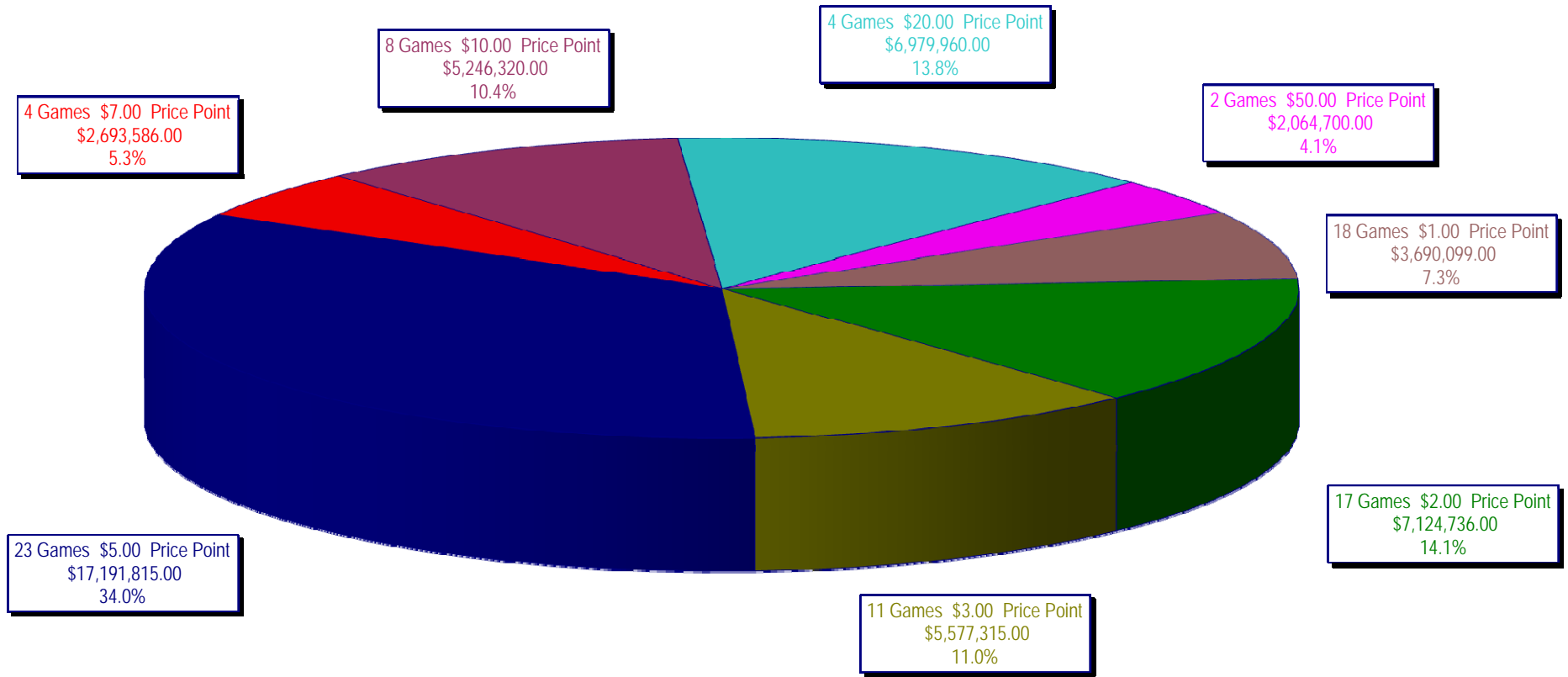
On-Line Sales

		FY Sales Through Week Ending 7/17/2010		FY Prize Expense Through Week Ending 7/17/2010	Actual* Prize Payout	Base Payout (Prize Pool)
Lotto	\$	234,830,244	\$	117,549,135	50.06%	50.00%
Pick 3		237,732,330		112,937,320	47.51%	50.00%
Pick 3 Sum It Up		4,756,562		2,574,482	54.12%	50.00%
Cash Five		58,500,798		30,216,822	51.65%	50.00%
Texas Two Step		43,365,670		22,186,041	51.16%	50.00%
Mega Millions		149,707,704		74,784,423	49.95%	50.00%**
Megaplier		33,434,745		11,760,777	35.18%	N/A
Daily 4		46,597,415		22,417,650	48.11%	50.00%
Daily 4 Sum It Up		4,246,867		1,769,831	41.67%	50.00%
Powerball		45,929,339		23,548,850	51.27%	50.00%
Power Play		10,822,016		4,829,719	44.63%	50.00%
Totals	\$	869,923,689	\$	424,575,049	48.81%	

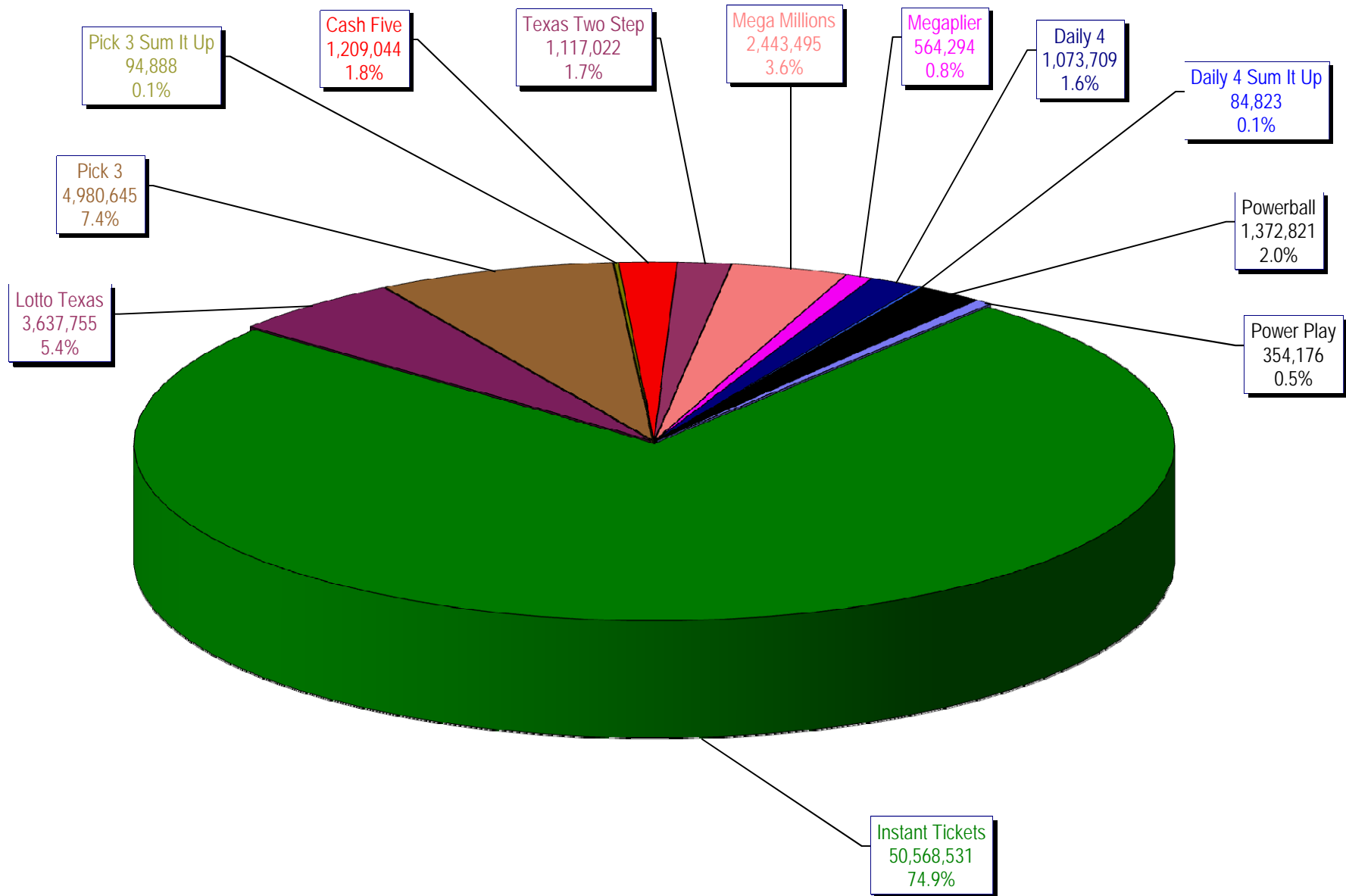
* Before Unclaimed Prizes

** Estimated; depends on # of guaranteed prizes won in Texas

Texas Lottery Commission
Instant Ticket Sales
For the Week Ending 07/17/2010
(Unaudited)



Texas Lottery Commission
All Game Sales
For the Week Ending 07/17/2010
(Unaudited)



Week Ended	Instant Games	New Games & Dates	Lotto Texas	Jackpot W	S	Pick 3	Pick 3 Sum It Up	Cash Five	Texas Two Step	Jackpot M	TH	Mega Millions	Jackpot T	F	Megaplier	Daily 4	Daily 4 Sum It Up	Powerball	Jackpot W	S	Power Play	Total	Per Cap.
9/5/2009	53,436,608.00	1163 (\$2.N) - 09/31/09	6,294,287.00	45	47	5,276,229.00	104,886.00	1,338,093.00	1,212,330.00	1.2	200	2,959,401.00	12	12	708,622.00	955,411.00	95,751.00					72,381,618.00	2.96
9/12/2009	49,896,100.00	1200 (\$1.N); 1201 (\$10.N) - 09/07/09	6,426,945.00	49	51	5,109,927.00	104,641.00	1,278,982.00	771,782.00	225	200	2,811,431.00	18	28	693,407.00	918,268.00	90,931.50					68,102,415.00	2.80
9/19/2009	50,971,937.00	1202 (\$3.N); 1185 (\$5.N) - 09/14/09	6,496,645.00	53	55	5,176,010.00	103,700.00	1,295,302.00	803,124.00	200	225	3,164,844.00	38	51	760,088.00	965,671.50	94,237.00					69,631,558.50	2.87
9/26/2009	49,975,243.00	1141 (\$1.N); 1259 (\$3.N) - 09/21/09	6,765,389.00	57	59	4,894,237.50	98,171.00	1,271,129.00	915,249.00	275	400	3,568,088.00	62	75	822,408.00	918,596.00	92,187.50					69,320,678.00	2.85
10/3/2009	52,283,569.00	1203 (\$2.N); 1172 (\$5.N) - 09/28/09	7,003,107.00	61	63	5,156,873.00	102,841.50	1,315,863.00	1,111,913.00	525	650	4,270,019.00	88	105	939,935.00	993,158.50	97,984.50					73,275,263.50	3.01
10/10/2009	52,238,261.00	1205 (\$1.N); 1263 (\$3.N) - 10/05/09	7,061,948.00	64	67	5,050,571.00	102,586.50	1,300,852.00	811,464.00	200	225	5,100,350.00	122	145	1,050,507.00	971,147.50	98,012.50					73,785,699.50	3.03
10/17/2009	50,806,599.00	1187 (\$2.N); 1193 (\$20.N) - 10/12/09	7,262,683.00	70	73	4,990,457.00	99,389.50	1,276,305.00	769,253.00	200	200	6,448,660.00	170	200	1,245,381.00	931,084.00	90,371.00					73,921,192.50	3.04
10/24/2009	50,731,592.00	1188 (\$3.N); 1189 (\$5.N) - 10/19/09	5,785,292.00	76	4	4,845,815.00	93,256.00	1,282,033.00	806,971.00	225	275	2,776,628.00	12	18	663,491.00	931,641.00	89,284.00					66,006,003.00	2.80
10/31/2009	50,684,853.00	1192 (\$10.N); 1186 (\$1.N) - 10/26/09	3,749,006.00	5	6	4,944,409.00	98,542.50	1,289,523.00	815,750.00	375	200	2,988,991.00	28	40	717,574.00	1,006,435.00	100,489.50					66,995,573.00	2.73
11/7/2009	54,633,928.00	1191 (\$7.N) - 11/02/09	3,982,319.00	7	8	5,265,020.50	105,180.50	1,339,215.00	853,140.00	225	275	3,458,403.00	50	63	795,045.00	1,058,564.00	104,724.00					71,595,539.00	2.94
11/14/2009	52,109,218.00	1218 (\$2.N); 1184 (\$5.N) - 11/09/09	3,985,493.00	9	10	5,172,602.50	104,782.00	1,274,573.00	829,607.00	375	200	3,210,618.00	77	12	752,365.00	983,342.50	93,966.00					68,516,567.00	2.82
11/21/2009	52,427,881.00	0	3,943,958.00	11	12	5,123,802.00	104,705.00	1,255,026.00	797,796.00	225	275	2,834,318.00	17	27	687,221.00	990,042.00	92,693.00					68,257,442.00	2.81
11/28/2009	50,519,477.00	1206 (\$1.N); 1190 (\$5.N); 1264 (\$1.N) - 11/23/09	3,966,034.00	13	14	5,043,210.00	102,783.50	1,202,798.00	693,774.00	200	225	2,932,809.00	37	47	691,194.00	986,335.00	92,508.00					66,229,924.00	2.72
12/5/2009	54,376,448.00	0	4,004,632.00	15	16	5,393,458.00	111,441.50	1,288,282.00	873,210.00	250	350	3,297,486.00	57	69	773,136.00	1,063,424.00	100,271.00					71,281,788.50	2.93
12/12/2009	52,664,632.00	1159 (\$2.N); 1182 (\$5.N) - 12/07/09	4,105,013.00	17	18	5,091,389.00	102,613.50	1,294,933.00	1,075,732.00	475	600	4,054,401.00	83	100	874,842.00	1,030,471.50	97,299.50					70,381,326.50	2.89
12/19/2009	54,542,793.00	1207 (\$1.N); 1208 (\$3.N) - 12/14/09	4,355,440.00	20	21	5,115,559.00	100,562.50	1,293,347.00	1,288,820.00	750	925	5,052,350.00	118	140	1,028,695.00	1,046,577.50	98,399.50					73,922,543.50	3.04
12/26/2009	56,462,042.00	1209 (\$2.N); 1168 (\$5.N) - 12/21/09	4,400,669.00	22	24	4,950,247.50	92,929.50	1,243,523.00	767,273.00	200	200	4,188,741.00	162	12	866,559.00	982,220.50	90,616.50					74,064,821.00	3.04
1/2/2010	57,982,304.00	0	4,605,833.00	26	27	5,021,566.50	97,500.50	1,319,224.00	889,422.00	225	275	2,825,733.00	16	27	676,790.00	1,012,922.00	93,894.00					74,495,189.00	3.06
1/9/2010	53,471,476.00	1210 (1.N); 1211 (\$10.N) - 01/04/10	4,579,485.00	29	31	5,094,846.00	97,216.00	1,297,994.00	1,024,853.00	375	525	3,114,965.00	37	48	735,440.00	989,636.00	91,180.50					70,497,091.50	2.90
1/16/2010	50,524,929.00	1169 (\$1.N); 1212 (\$5.N) - 01/11/10	4,695,322.00	32	33	5,126,839.50	97,356.00	1,291,866.00	940,190.00	200	200	3,482,816.00	60	73	765,670.00	977,468.00	91,520.00					68,013,976.50	2.80
1/23/2010	51,372,320.00	1196 (\$2.N); 01/18/10	4,777,379.05	35	36	5,022,299.50	95,488.50	1,278,497.00	781,017.00	200	225	4,024,412.00	86	105	862,949.00	977,063.00	89,155.50					69,280,578.55	2.85
1/30/2010	51,826,337.00	1204 (\$7.N); 1213 (\$1.N) - 01/25/10	4,847,766.00	37	39	5,114,072.00	98,628.00	1,286,765.00	792,340.00	275	200	4,803,680.00	121	144	986,194.00	1,006,099.50	91,113.00					70,852,994.50	2.91
2/6/2010	61,705,135.00	1068 (\$20.N) - 02/01/10	4,881,934.00	41	42	5,542,131.50	107,342.50	1,338,894.00	772,320.00	225	200	2,650,100.00	32	40	628,992.00	1,056,980.00	97,214.00	2,649,068.00	115	140	537,205.00	81,967,316.00	3.37
2/13/2010	57,505,343.00	1199 (\$3.N); 1215 (\$5.N) - 02/08/10	4,819,001.45	44	45	5,356,396.50	103,135.00	1,286,342.00	714,965.00	225	200	2,633,117.00	32	44	630,842.00	1,038,769.00	92,282.00	1,462,396.00	20	25	373,535.00	76,036,123.95	3.13
2/20/2010	58,716,226.00	1216 (\$1.N); 1170 (\$2.N) - 02/15/10	4,961,565.00	47	49	5,390,327.50	102,608.50	1,316,332.00	788,810.00	225	250	3,029,204.00	56	68	687,590.00	1,078,506.50	94,491.50	1,432,071.00	40	57	377,162.00	77,973,894.00	3.21
2/27/2010	57,442,427.00	1180 (\$5.N) - 02/22/10	5,066,421.00	51	52	5,546,306.00	120,380.50	1,305,799.00	960,381.00	350	475	3,364,353.00	83	99	742,490.00	1,050,321.50	94,684.50	1,482,938.00	76	95	381,936.00	77,558,437.50	3.19
3/6/2010	61,437,946.00	1220 (\$1.N); 1221 (\$10.N) - 03/01/10	5,284,389.00	53	55	5,894,489.50	132,533.50	1,351,147.00	943,000.00	600	200	4,045,564.00	112	133	844,343.00	1,107,306.00	95,953.50	1,741,190.00	114	139	419,220.00	83,297,081.50	3.42
3/13/2010	57,400,063.00	1222 (\$5.N) - 03/08/10	5,197,968.00	57	59	5,571,755.50	126,231.50	1,298,469.00	789,890.00	225	275	2,460,505.00	12	20	545,902.00	1,057,388.50	93,137.00	2,305,472.00	170	200	492,393.00	77,379,175.00	3.18
3/20/2010	54,714,545.00	0	5,207,836.00	60	62	5,269,570.50	112,041.50	1,268,903.00	738,856.00	200	225	2,253,444.00	12	20	586,106.00	1,025,255.00	88,180.50	1,221,348.00	20	28	327,817.00	72,873,902.50	3.00
3/27/2010	54,229,797.00	1223 (\$3.N); 1163 (\$2.N); 1224 (\$5.N) - 03/22/10	5,434,298.00	63	66	5,385,341.00	114,078.00	1,272,060.00	850,623.00	250	350	2,405,789.00	29	40	576,138.00	1,070,268.50	96,399.50	1,295,148.00	43	60	341,461.00	73,071,401.00	3.00
4/3/2010	56,585,236.00	1214 (\$50.N) - 03/29/10	5,600,322.00	68	70	5,501,954.50	115,934.00	1,286,302.00	1,086,427.00	475	600	2,657,756.00	51	63	624,012.00	1,098,758.50	101,177.00	1,602,501.00	81	103	387,174.00	76,647,554.00	3.15
4/10/2010	54,933,349.00	1230 (\$3.N) - 04/05/10	6,482,975.00	72	75	5,377,071.50	113,148.50	1,285,488.50	1,298,097.00	750	925	2,951,164.00	76	90	670,723.00	1,055,267.50	96,327.50	2,066,088.00	125	150	453,074.00	76,782,773.50	3.16
4/17/2010	54,850,820.00	1181 (\$1.N); 1219 (\$5.N) - 04/12/10	6,384,113.00	77	78	5,308,745.00	109,011.00	1,272,019.00	761,931.00	200	225	3,525,945.00	105	122	750,658.00	1,057,948.00	94,470.50	2,765,224.00	175	212	549,715.00	77,430,599.50	3.18
4/24/2010	53,419,824.00	1176 (\$7.N) - 04/19/10	6,446,593.00	80	82	5,212,072.00	106,531.50	1,257,225.00	764,745.00	200	225	4,177,074.50	143	166	845,288.00	1,043,783.50	93,211.00	2,756,988.00	252	20	545,756.00	76,669,091.50	3.15
5/1/2010	53,739,981.00	1128 (\$5.N) - 04/26/10	6,348,319.50	84	85	5,292,503.00	106,387.50	1,271,152.50	877,142.00	275	375	5,456,506.50	191	224	1,018,284.00	1,051,572.00	92,675.00	1,492,818.00	30	45	382,182.00	77,129,523.00	3.17
5/8/2010	55,268,772.00	1227 (\$1.N); 1266 (\$3.N) - 05/03/10	6,506,131.00	87	88	5,511,957.00	109,502.00	1,302,142.00	1,141,678.00	500	625	4,581,156.00	266	12	885,600.00	1,084,850.00	98,322.00	1,588,557.00	60	80	418,810.00	78,497,477.00	3.23
5/15/2010	52,963,124.00	1268 (\$1.N) - 05/10/10; 1270 (\$2.N) - 05																					